

Chucks

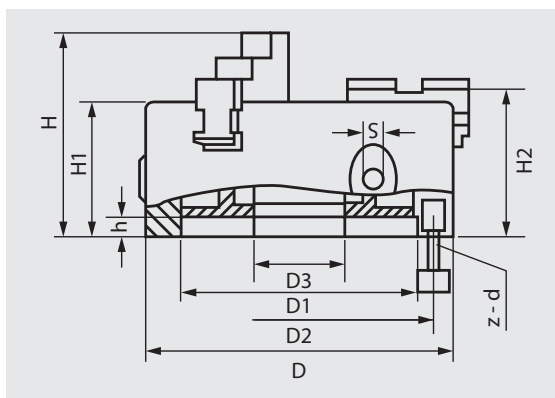
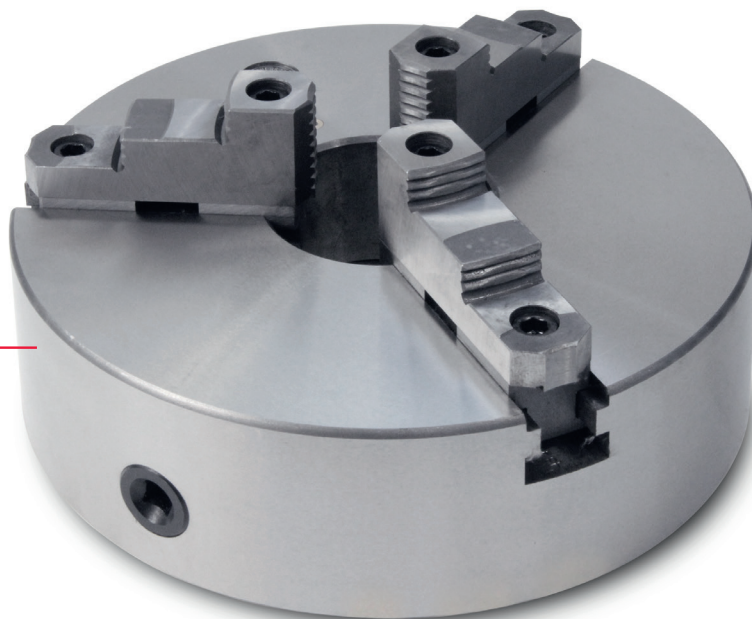
Three-jaw Chuck for Turntables

Precisely fitting

We offer a multitude of different chucks for chuck tensioning, above all on welding turntables. Every workpiece diameter from 2 mm up to 1530 mm can be fixed. In addition to our "Chuck series" we now have "Chuck 500" in our product range for the excellent positioning of very heavy workpieces.

Features

- Universally applicable.
- Self-retaining tension.
- Extra set of soft chuck jaws which can be finished for increased fitting accuracy.

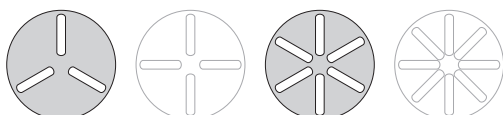


Scope of delivery:

- 1 Three-jaw chuck
- 1 Wrench

Size (D)	D1	D2	D3	H	H1	H2	h	S	z - d	Max load	Weight
Chuck 160-D	130	142	40	95	65	-	5	10	3 - M8	160 Nm	8,8 kg
Chuck 200-D	165	180	65	109	75	-	5	12	3 - M10	250 Nm	15,5 kg
Chuck 325-D	272	296	100	154,5	96	102,5	12	13	3 - M16	400 Nm	44 kg
Chuck 500-D	440	465	210	184	115	-	6	17	6 - M16	630 Nm	124 kg

Model	Chuck 160-D	Chuck 200-D	Chuck 325-D	Chuck 500-D
Drilling	40 mm	65 mm	100 mm	210 mm
Inner tensioning range	3 – 145	4 – 200	11,5 – 340	25 – 500
Outer tensioning range	50 – 160	65 – 200	95 – 350	150 – 500
Mounting hole circle	142 mm	180 mm	296 mm	465 mm
Fixture	3-M10	3-M10	3-M16	6-M16
Item no.	91919008	91919012	91919016	91919024



The jaw chuck of this series fit without modifications to the JAVAC rotary tables with three and six grooves.