

3D Modular Positioner Systems

Welding Positioner PRO 2 PN, PRO 3 PN and PRO 4 PN

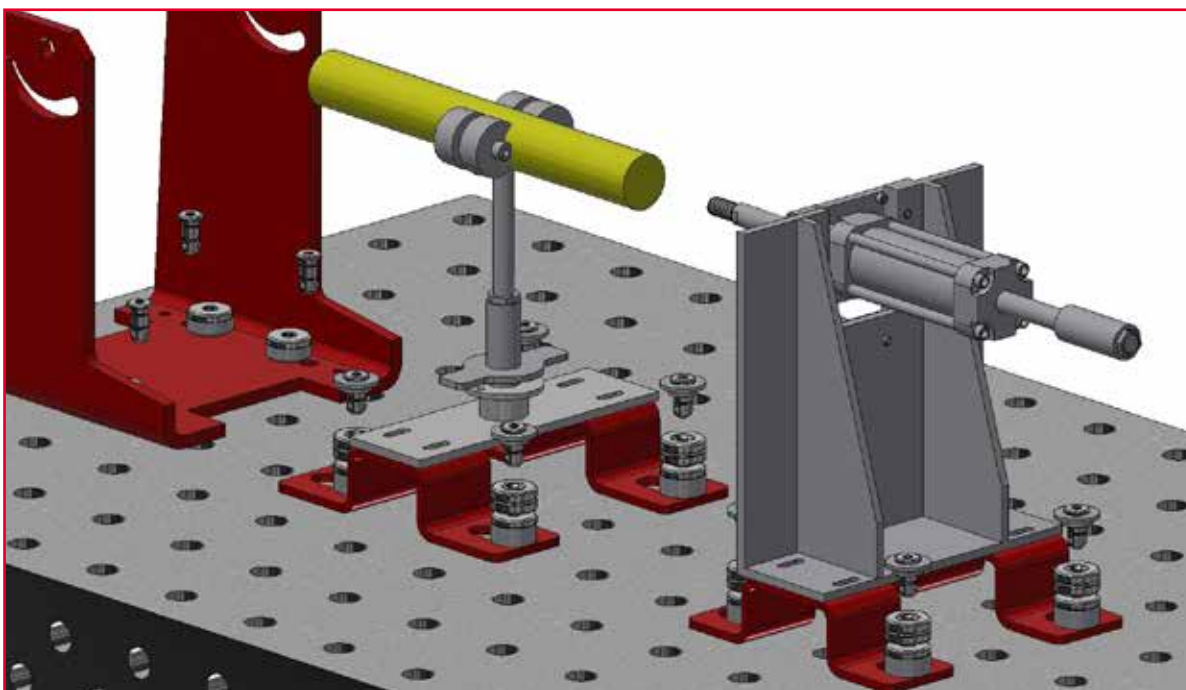
Welding Positioner suitable for 3D modular systems

The welding positioner of the PRO series now offers us turntables suitable for 3D welding tables in construction systems. The PRO 2N, PRO 3N and PRO 4N can be attached to the welding and clamping tables in a short time by means of a sophisticated system.



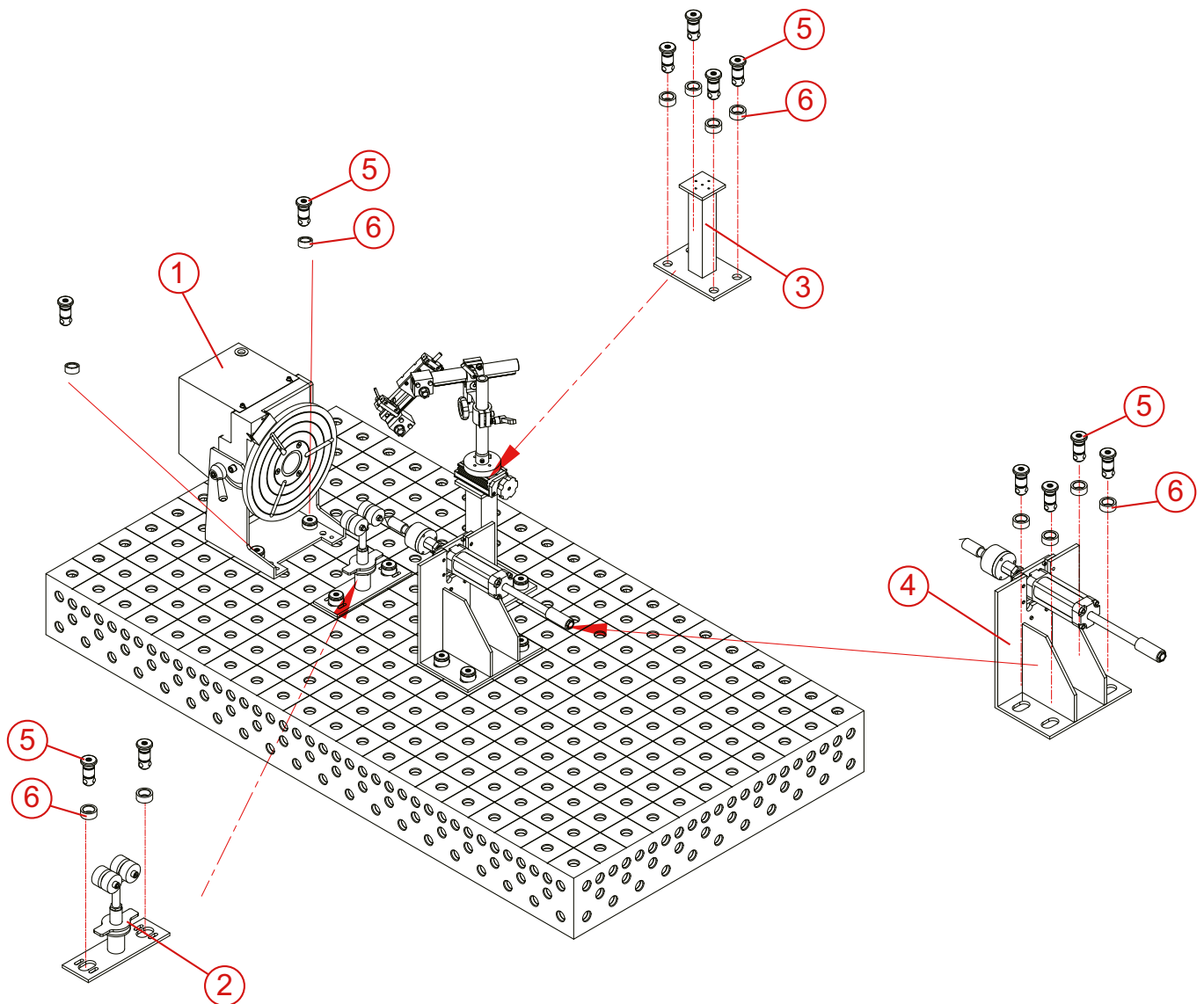
Special bolts for mounting

All three PRO tables have mounting holes at the bottom of the frame. Thanks to the special bolts, the welding tables can be mounted very easily, quickly and safely.



3D Modular Positioner Systems

Welding Positioner PRO 2, PRO 3 and PRO 4



No.	Modell	Name
1	RRO 2N, PRO 3N, PRO 4N	Positioner without controller
2	WT-R1	Idler
3	WT-LT	Stand for torch holder
4	WT-CL 100	Tailstock
5	No.280510	3D Bolt
6	PRO09813	Washer

Modular Positioner Systems

Welding Positioner PRO 2 PN

With 60 mm hollow shaft

Features

- Tilting and clamping from 0° to 90°.
- Start/stop via location-independent foot switch.
- Rotating direction adjustable: cw/ccw.
- Rotating time adjustable.
- 60 mm hollow shaft.
- Table diameter: 340 mm. The surface is chrome-plated as a protection against weld spatters.
- Table speed adjustable from 0,6 – 6 rpm.
- Welding machine can be actuated via turntable control.
- Mass contact transmits 300A/100%.
- Turntable and control unit are separated.
- HF-protected.



Modell	PRO 2 PN
Supply voltage	AC 230 V/50 Hz
Ground connection	300 A/100 %
Tilting range	0° – 90°
Table diameter	340 mm
Speed	0,6 – 6 rpm
Rotating directions	rechtsdrehend/linksdrehend
Max. load horizontal	160 kg
Mounting hole circle Ø	114mm to max. 302 mm
Hollow shaft	60 mm
Slot width turntable	14mm
Measurem. (L x W x H) mm	385 x 340 x 375
Weight	56 kg
Item no.	02.30.01.10112

Max. load of PRO 2 in horizontal position:
160 kg



- COM-1000: easy control start/stop, cw/ccw
- COM-1802: easy control start/stop, cw/ccw
- COM-1803S: easy control start/stop, cw/ccw and with Speeddisplay
- COM-1800 VSF: with potentiometric foot switch
- COM-2800: with overlap welding, pneumatic control for automated welding
- COM-2803S: with overlap welding, pneumatic control and. with Speeddisplay
- COM-3800: with overlap welding / Spot welding and tack welding
- COM-1803 ROB: with Robotic interface

Detailed information on
PRO-turntable control systems
on page xx!



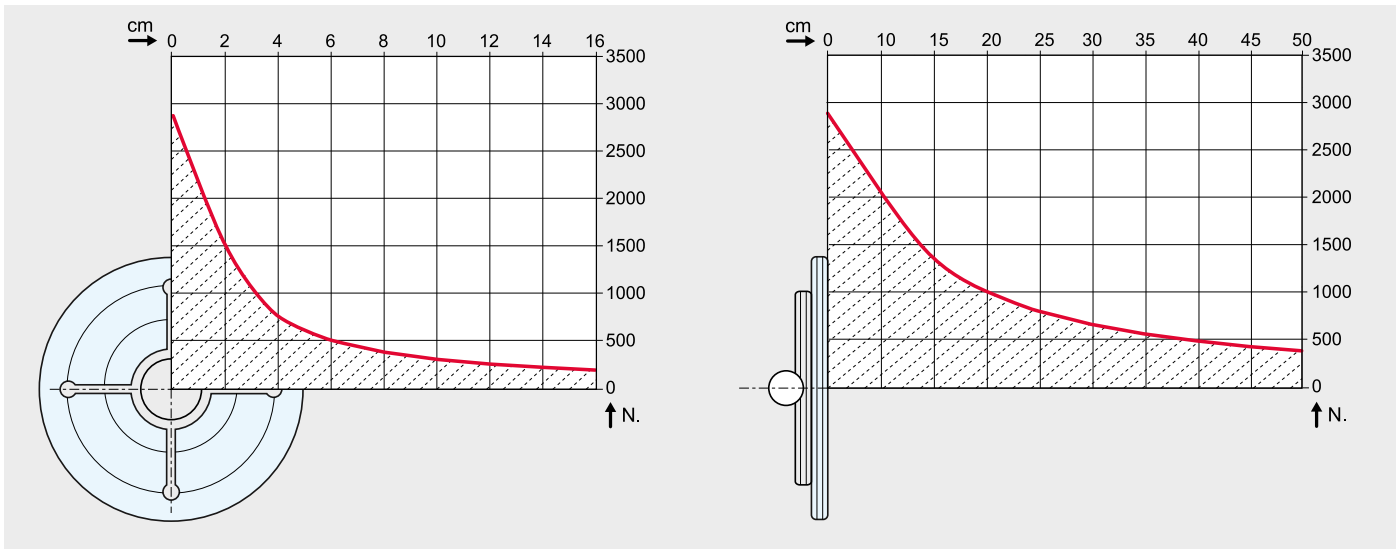
Modular Positioner Systems

Welding Positioner PRO 2 PN

Perfectly positioned

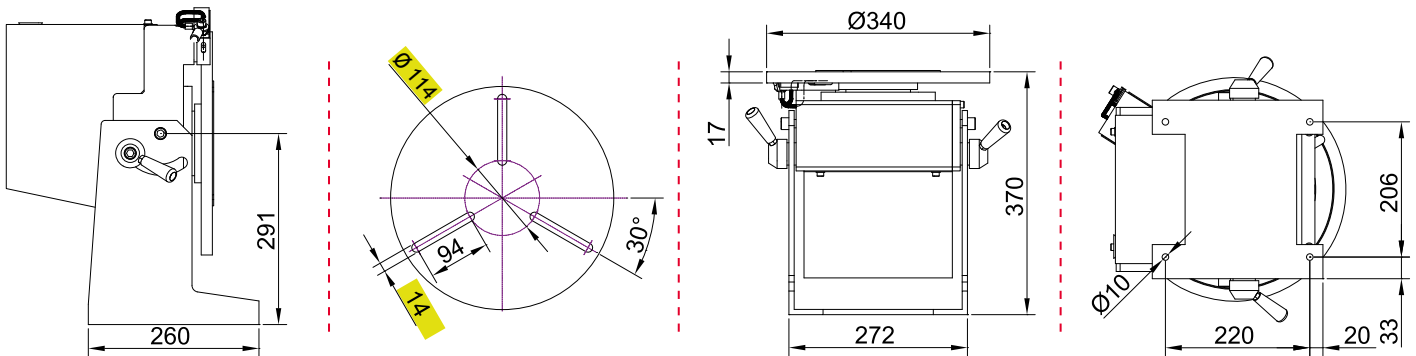
When choosing a turntable, the turning and tilting moment must be considered by all means. The distance between the center of gravity of the workpiece and the faceplate must be considered and the eccentric distance of the center of gravity and the center respectively. Don't forget

the weight of the clamping device. It is often higher than the weight of the workpiece itself. The workpieces can be positioned optimally for welding with a turning and tilting table. This improves productivity and quality significantly.



When choosing your positioner, please consider

- the center of gravity of your workpiece
- the weight of your tensioning device (chuck)



Note

suitable three-jaw chuck for Pro 2 Chuck 160 D and Chuck 200 D.



Modular Positioner Systems

Welding Positioner PRO 3 PN

With 60 mm hollow shaft

Features

- Tilting and clamping from 0° to 90°.
- Start/stop via location-independent foot switch.
- Rotating direction adjustable: cw/ccw.
- Rotating time adjustable.
- 60 mm hollow shaft.
- Table diameter: 340 mm. The surface is chrome-plated as a protection against weld spatters.
- Table speed adjustable from 0,6 – 6 rpm.
- Welding machine can be actuated via turntable control.
- Mass contact transmits 300A/100%.
- Turntable and control unit are separated.
- HF-protected.



Modell	PRO 3 PN
Supply voltage	AC 230 V/50 Hz
Ground connection	300 A/100 %
Tilting range	0° – 90°
Table diameter	340 mm
Speed	0,6 – 6 rpm
Rotating directions	cw / ccw
Max. load horizontal	300 kg
Mounting hole circle Ø	114mm up to max. 302 mm
Hollow shaft	60 mm
Slot width turntable	14mm
Measur. (L x W x H) mm	380 x 340 x 425
Weight	62 kg
Item no. PRO 3 PN	02.30.01.10132
Item no. PRO 3 SN mit Servomotor 0,05 - 5 rpm	02.31.01.10100

Max load of PRO 3 in horizontal position: 290 kg.



- COM-1000: easy control start/stop, cw/ccw
- COM-1802: easy control start/stop, cw/ccw
- COM-1803S: easy control start/stop, cw/ccw and with Speeddisplay
- COM-1800 VSF: with potentiometric foot switch
- COM-2800: with overlap welding, pneumatic control for automated welding
- COM-2803S: with overlap welding, pneumatic control and. with Speeddisplay
- COM-3800: with overlap welding / Spot welding and tack welding
- COM-1803 ROB: with Robotic interface
- PLC-1801: Controller for turntables with servo motor

Detailed information on PRO-turntable control systems on page xx!



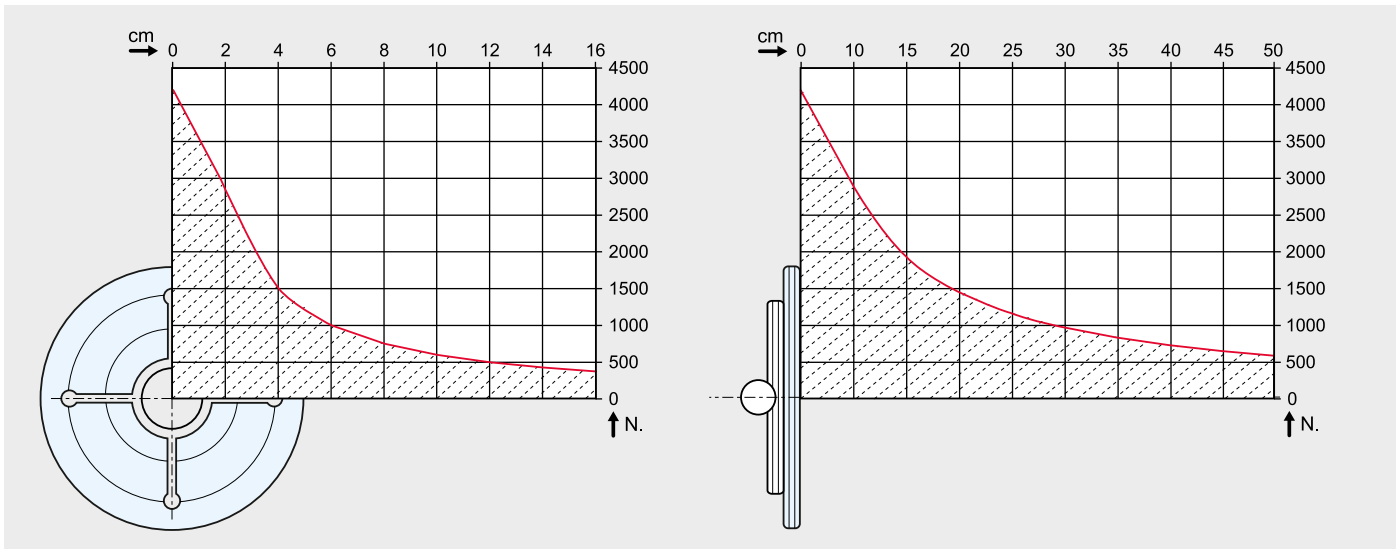
Modular Positioner Systems

Welding Positioner PRO 3 PN

Perfectly positioned

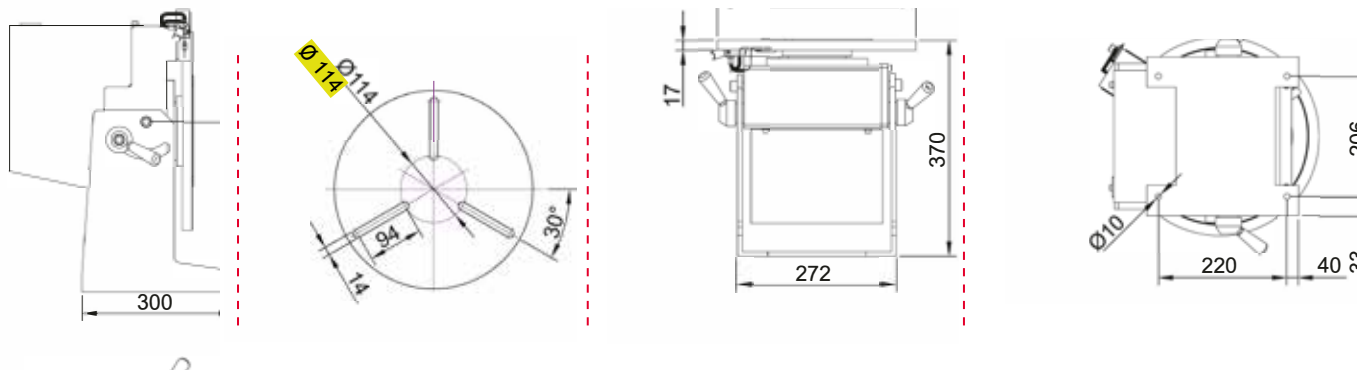
When choosing a turntable, the turning and tilting moment must be considered by all means. The distance between the center of gravity of the workpiece and the faceplate must be considered and the eccentric distance of the center of gravity and the center respectively. Don't forget

the weight of the clamping device. It is often higher than the weight of the workpiece itself. The workpieces can be positioned optimally for welding with a turning and tilting table. This improves productivity and quality significantly.



When choosing your positioner, please consider

- the center of gravity of your workpiece
- the weight of your tensioning device (chuck)



Modular Positioner Systems

Welding Positioner PRO 4 PN

With 120 mm hollow shaft

Features

- Tilting and clamping from 0° to 90°.
- Start/stop via location-independent foot switch.
- Rotating direction adjustable: cw/ccw.
- Rotating time adjustable.
- 120 mm hollow shaft.
- Table diameter: 400 mm. The surface is chrome-plated as a protection against weld spatters.
- Table speed adjustable from 0,2 - 2 rpm.
- Welding machine can be actuated via turntable control.
- Mass contact transmits 300A/100%.
- Turntable and control unit are separated.
- HF-protected.



Model	PRO 4 PN
Supply voltage	AC 230 V/50 Hz
Ground connection	300 A/100 %
Tilting range	0° - 90°
Table diameter	400 mm
Hollow shaft	120 mm
Mounti Ø	180 mm up to max. 360 mm
Schlitzbreite Drehteller	17mm
Drehzahl	0,2 - 2 rpm
Drehrichtungen	cw / ccw
Max. Belastung horizontal	400 kg
HF-Schutz	92 %
Maße (L x B x H) mm	480 x 400 x 425
Gewicht	69 kg
Artikelnummer PRO 4 PN	02.30.01.10142
Artikelnummer PRO 3 SN mit Servomotor 0,05 - 5 rpm	02.31.01.10200

- COM-1000: easy control start/stop, cw/ccw
 COM-1802: easy control start/stop, cw/ccw
 COM-1803S: easy control start/stop, cw/ccw and with Speeddisplay
 COM-1800 VSF: with potentiometric foot switch
 COM-2800: with overlap welding, pneumatic control for automated welding
 COM-2803S: with overlap welding, pneumatic control and. with Speeddisplay
 COM-3800: with overlap welding / Spot welding and tack welding
 COM-1803 ROB: with Robotic interface

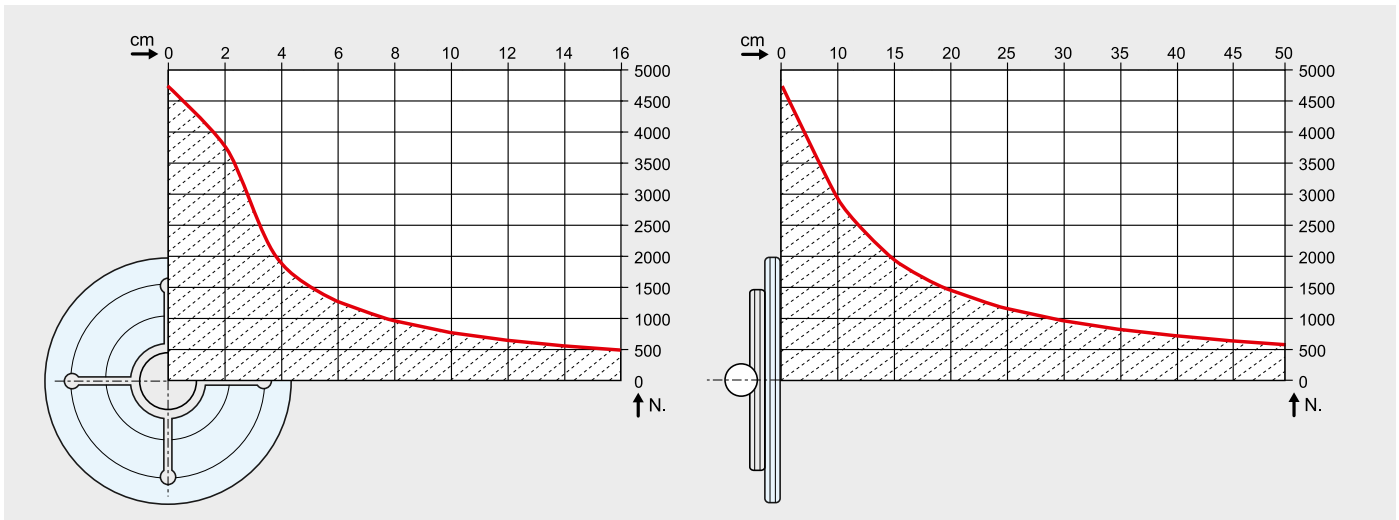
Modular Positioner Systems

Welding Positioner PRO 4 PN

Perfectly positioned

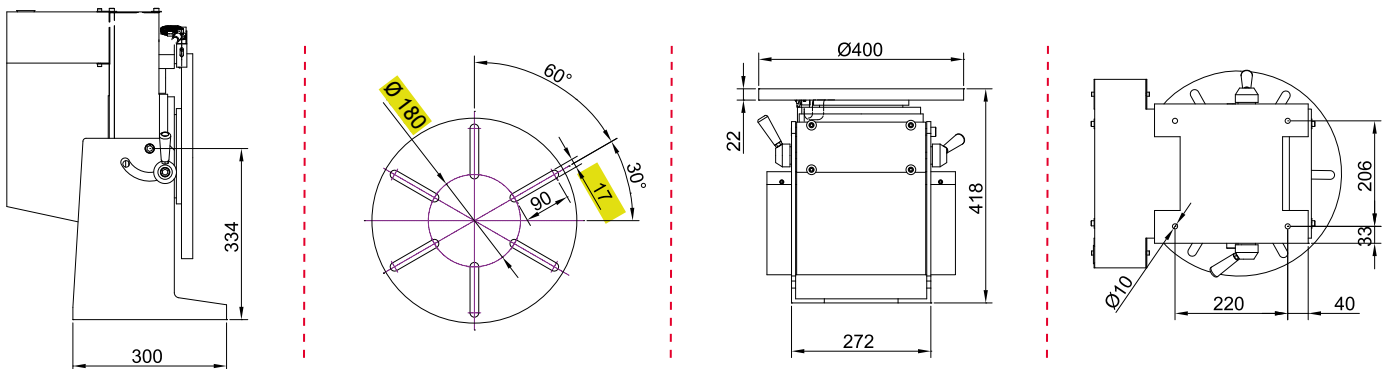
When choosing a turntable, the turning and tilting moment must be considered by all means. The distance between the center of gravity of the workpiece and the faceplate must be considered and the eccentric distance of the center of gravity and the center respectively. Don't forget

the weight of the clamping device. It is often higher than the weight of the workpiece itself. The workpieces can be positioned optimally for welding with a turning and tilting table. This improves productivity and quality significantly.



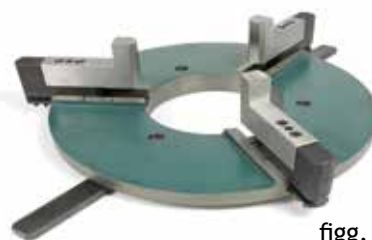
When choosing your positioner, please consider

- the center of gravity of your workpiece
- the weight of your tensioning device (chuck)



Note

suitable three-jaw chuck for PRO4 Chuck 400 JW and Chuck 325 D



figg. Chuck 400JW