

# BE PARWELD PROTECTED

Staying safe and protected is essential when working in any environment, a welding one is no different. Parweld offers a range of hard wearing welding safety equipment ideal for workshop use.



## WELDING HOOD

Page 368

## PANTHER LEATHER SLEEVE

Page 366

## NEW PANTHER LEATHER JACKET

Page 364



## NEW XR937H

Page 376

## PANTHER APRON

Page 365

## PANTHER GAUNTLET

Page 353

## PANTHER LEATHER SPAT

Page 366

# PANTHER PRO GAUNTLET



NEW



COW GRAIN LEATHER

STOCK CODE P3824

SIZE 10



4244



313X3X

## FEATURES

- Fully reinforced palm and thumb
- Reinforced fingers
- Fully Lined
- Minimum palm thickness 1.2mm
- Extra length cuff (180mm)
- A grade leather

## STANDARDS

- BS EN 388:2003
- BS EN 420:2003
- BS EN 12477:2001
- BS EN 407:2004



# PANTHER PRO LONG SLEEVE GAUNTLET

NEW



COW GRAIN LEATHER

STOCK CODE P3822

SIZE 10



4244



313X3X

## FEATURES

- Fully reinforced palm and thumb
- Long sleeve covers
- Covers whole arm for extra protection
- A grade leather
- 480mm cuff length

## STANDARDS

- BS EN 388:2003
- BS EN 420:2003
- BS EN 12477:2001
- BS EN 407:2004

# PANTHER GAUNTLET



COW SPLIT LEATHER

STOCK CODE P3825

SIZE 10

## FEATURES

- Double Kevlar® stitched
- Reinforced palm and thumb
- 'A' grade leather
- Minimum palm thickness 1.2mm
- Fully lined and fully welted
- Extra length cuff (180mm)

## STANDARDS

- BS EN 388:2003
- BS EN 420:2003
- BS EN 12477:2001
- BS EN 407:2004



4244



313X3X

## UPDATED

Reinforced palm rest



# PANTHER ALUMINISED GAUNTLET

NEW



COW SPLIT LEATHER

STOCK CODE P3828

SIZE 10

## FEATURES

- Aluminium backing giving enhanced protection against radiated heat
- Kevlar® stitching
- Fully lined

## STANDARDS

- BS EN 388:2003
- BS EN 420:2003
- BS EN 12477:2001
- BS EN 407:2004



4244



313X3X



# PANTHER PRO TIG GLOVE

NEW



GOAT SKIN WITH COW HIDE CUFF AND REAR

STOCK CODE P3839

SIZE 10



4244



313X3X

## FEATURES

- Cow hide rear to give improved heat protection
- Reinforced hand rest for improved durability
- Thumb patch for filler rod feeding
- Elasticated cuff for secure fit

## STANDARDS

- BS EN 388:2016
- BS EN 407:2004
- BS EN 12477:2001
- BS EN 420:2003



# PANTHER FINGERTIP SENSITIVITY TIG GLOVE



GOAT SKIN WITH COW HIDE CUFF

STOCK CODE P3838

SIZE 10

## FEATURES

- Reinforced thumb
- Reinforced wrist patch
- Extra long cuff (150mm)

## STANDARDS

- BS EN 388:2016
- BS EN 407:2004
- BS EN 12477:2001
- BS EN 420:2003

## UPDATED

Gusseted fingers for improved dexterity



1111 41XX2X



# PANTHER DRIVERS GLOVE



COW HIDE GRAIN LEATHER

STOCK CODE P3855

SIZE 10

## FEATURES

- Fully lined for extra comfort
- Key set thumb for extra movement and flexibility
- Rolled hem
- Elasticated back

## STANDARDS

- BS EN 388:2003

UPDATED

Reinforced palm for extended life.



4133







# PANTHER MESH BACK DRIVERS GLOVE

NEW



COW GRAIN LEATHER  
STOCK CODE P3854  
SIZE 10

## FEATURES

- Soft leather palm and finger facing
- Mesh rear for cooling
- Neoprene knuckle guard

## STANDARDS

- BS EN 388:2003

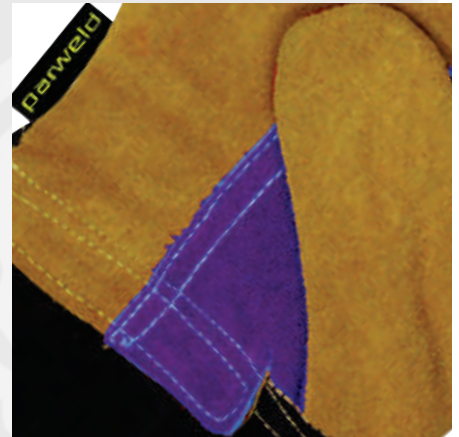


4244



313X3X

# PANTHER CANADIAN RIGGER GLOVE



COW SKIN AND COTTON  
STOCK CODE P3805  
SIZE 10

## FEATURES

- Premium split cow skin
- 50mm reinforced cuff incorporating vein patch
- Minimum palm thickness 1.2mm
- Hi-Viz strip on knuckle protection

## STANDARDS

- BS EN 388:2003

## UPDATED

Additional reinforcement around thumb.



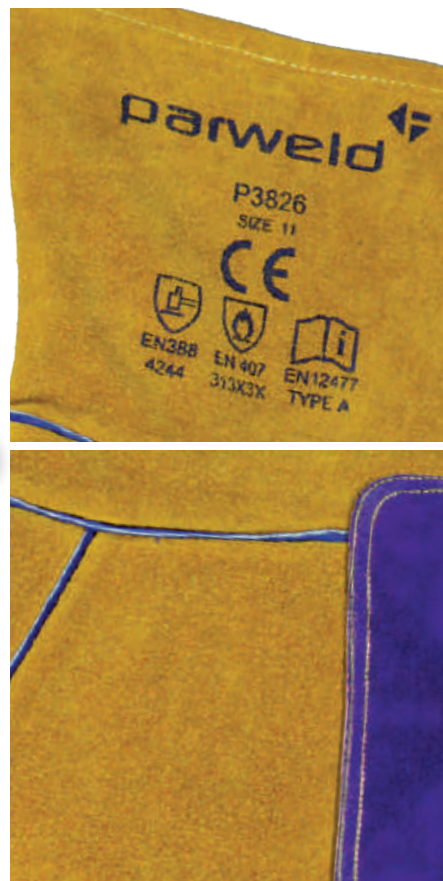
4133





# REVERSIBLE GAUNTLETS

NEW



COW SPLIT LEATHER

STOCK CODE P3826

SIZE 10

## FEATURES

- Double Kevlar® stitched
- Reversible design reduces costs
- Minimum palm thickness 1.2mm
- Fully lined and fully welted

## STANDARDS

- BS EN 388:2003
- BS EN 420:2003
- BS EN 12477:2001
- BS EN 407:2004



4244



313X3X

# PARWELD GLOVES

## WELDERS GAUNTLET - P3820



COW SPLIT  
LEATHER  
SIZE 10

### FEATURES

- One piece back
- Reinforced palm
- Fully lined
- Minimum palm thickness 1.2mm



3244 414X4X

### STANDARDS

- BS EN 388:2016
- BS EN 407:2004
- BS EN 12477:2001
- BS EN 420:2003

## TIG GLOVE - P3835



GOAT SKIN WITH  
COW HIDE CUFF  
SIZE 10

### FEATURES

- Reinforced thumb
- Reinforced wrist patch
- Extra long cuff (150mm)



1111 212X1X

### STANDARDS

- BS EN 388:2016
- BS EN 407:2004
- BS EN 12477:2001
- BS EN 420:2003

### UPDATED

Now with gusseted fingers for improved dexterity

## TIG GLOVE - P3830



COW HIDE GRAIN  
LEATHER  
SIZE 10

### FEATURES

- Extra long cuff



1111 212X1X

### STANDARDS

- BS EN 388:2003
- BS EN 407:2004
- BS EN 12477:2001
- BS EN 420:2003

## POWER RIGGER GLOVE - P3802



COW SPLIT  
LEATHER  
SIZE 10

### FEATURES

- Shoulder split leather
- Rubberised cuff
- Elasticated back
- Fully lined for extra comfort



2244

### STANDARDS

- BS EN 388:2003
- BS EN 420:2003

## DOUBLE PALM RIGGER GLOVE - P3801



COW SPLIT  
LEATHER  
SIZE 10

### FEATURES

- Shoulder split leather
- Double palm finger and thumb
- Rubberised cuff
- Elasticated back
- Fully lined for extra comfort



3242

### STANDARDS

- BS EN 388:2016
- BS EN 420:2003

## ISO CUT C GLOVE - P3845



13G HPPE YARN  
WITH PU PALM  
COATING  
SIZES 9, 10 & 11

### FEATURES

- Enhanced cut protection (5) C
- Perfect for handling hazards within industry
- Light flexible PU palm coating
- Knitted wrist
- Abrasion resistance
- Colour safe identification



4X43C

### STANDARDS

- BS EN 388:2016

### PU GRIPPER GLOVE - P3860



PU COATED  
NYLON 13 G  
SIZE 8, 9, 10 & 11

#### FEATURES

- Ideal for light handling
- PU coating for grip and abrasion resistance
- Knitted wrist
- Light flexible PU palm coating
- Colour safe identification



4x14

#### STANDARDS

- BS EN 388:2016

### NITRILE GRIPPER GLOVE LITE - P3870



NITRILE COATED  
NYLON 13 G  
SIZE 8, 9, 10 & 11

#### FEATURES

- Ideal for light handling
- Light flexible nitrile palm coating
- Abrasion resistance
- Double density form nitrile coating
- Knitted wrist
- Oil and grease resistance
- Colour safe identification



3x13

#### STANDARDS

- BS EN 388:2016

### THERMAL GRIPPER LATEX GLOVE - P3840



LATEX  
SIZE 8, 9, 10 & 11

#### FEATURES

- Ideal for outdoor and cold store applications
- Textured latex palm coating for superb grip
- Ribbed knitted wrist
- Brushed terry lining for added comfort and warmth
- General handling
- Knitted wrist
- Abrasion resistance
- Colour safe identification



2x41

#### STANDARDS

- BS EN 388:2003

### MECHANIC GLOVE - P3810



SYNTHETIC  
LEATHER  
SIZE 10

#### FEATURES

- Velcro fasten cuff
- Spandex back for snug fit
- Reinforced palm and knuckles
- Finger tip wear pads



4133

## FINDING THE CORRECT SIZE

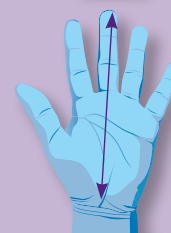
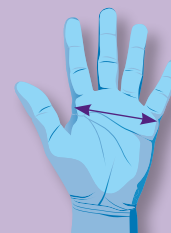
Ordering the right size is important for ensuring the gloves are comfortable and offer the fit for the intended purpose. Tight gloves can promote fatigue, whereas gloves that are too large can impair dexterity. To ensure the best fit please use the sizing chart.

You should always measure the hand you use the most for example if you are right handed measure your right hand using the Guide below to establish your correct size.

Measuring the hand in this way will not guarantee a 100% perfect fit due to all possible variations in hand size. Some workers, for example, may have long fingers, while others will have short fingers.

Workers may find gloves that are one-half or even a full size larger or smaller than the measured hand size fit more comfortably.

It is common to choose a slightly smaller glove when carrying out more dexterous or intricate tasks.



# ALUMINISED HAND SHIELD



NEW



SPLIT HIDE LEATHER WITH  
ALUMINISED FRONT

STOCK CODE  
P3829

## FEATURES

- Provides additional protection from reflected heat
- Elasticated straps



# PANTHER WELDING JACKET

NEW



## STOCK CODE

P3788

Sizes M, L, XL, XXL & XXL

## FEATURES

- Worn over garments to protect body and arms from sparks and spatter
- Leather front and shoulders
- Stand up collar
- Adjustable wrists
- Inside pocket
- Side take up straps
- Kevlar® stitched
- 1.2mm thick split cow hide
- Flame retardant cloth back with shoulder vent to improve comfort
- Flame retardant cloth under arm for improved flexibility
- Head phone slot

## STANDARDS

- BS EN ISO 11611:2007
- Class 1



# PANTHER APRON C/W BUCKLE AND TIES



## FEATURES

- Offers protection from sparks and heat generated from welding and industrial applications
- Kevlar® stitched
- Strong cotton webbing
- 1.2mm thick split cow hide

## STANDARDS

- BS EN ISO 11611:2007
- Class 1

## STOCK CODE

P3725

Size 61 cm x 91 cm (24" x 36")

## UPDATED

Fully sealed seam edges.





# PANTHER SPARK PROTECTION

## PANTHER LEATHER SPAT



### FEATURES

- Offers protection for shoes and trousers from sparks and heat generated from welding and industrial applications
- 1.2mm thick split cow hide

### STANDARDS

- BS EN ISO 11611:2007
- Class 1

### STOCK CODE

P3745

### UPDATED

Flame retardant cloth insert to improve flexibility.



## PANTHER LEATHER SLEEVE



### FEATURES

- Offers protection for clothes and arms from sparks and heat generated from welding and industrial applications
- Kevlar® stitched
- Superior quality split leather
- Elasticised at both ends
- 1.2mm thick split cow hide

### STANDARDS

- BS EN ISO 11611:2007
- Class 1

### STOCK CODE

P3765

Size 46cm (18")

### UPDATED

Flame retardant cloth insert to improve flexibility.



# SPARK PROTECTION

## RED APRON C/W BUCKLE & TIES - P3720



### FEATURES

- Heavy duty leather apron with reinforced ties
- Offers protection from sparks and heat generated from welding and industrial applications

### STANDARDS

- BS EN ISO 11611:2007
- Class 1

LEATHER

Size 61cm x 91cm (24" x 36")

## RED WELDING JACKET - P3780



LEATHER

### FEATURES

- Worn over garments to protect body and arms from sparks and spatter
- Velcro and stud fastening
- Protective flap for fasteners

### STANDARDS

- BS EN ISO 11611:2007
- Class 1

Sizes M, L, XL and XXL

## RED SLEEVE – 45CM (18") - P3760



LEATHER

### FEATURES

- Offers protection for clothes and arms from sparks and heat generated from welding and industrial applications
- Elasticised cuff

### STANDARDS

- BS EN ISO 11611:2007
- Class 1

Size 45cm (18")



# FLAME PROTECTION

## FLAME RETARDANT HOOD - P3940



### FEATURES

- Front fastening
- Adjustable
- Lined hood
- Navy blue

335g 100% Cotton fabric with flame retardant treatment

### STANDARDS

- BS EN 11612:2008
- BS EN 1161:2007
- BS EN ISO 14116:2008



X= Level of Protection.

AX BX CX



A1 B1 C1

Parweld's range of Flame Retardant apparel protects the user in situations where they are likely to be exposed to heat / or flame. All Parweld Flame Retardant (FR) apparel is tested and certified to EN 11612 and EN 14116.

### DEFINITION

#### BS EN 11612:2008

The product must:

- Offer protection against small splashes of molten metal, and brief contact with flame. The garments certified to this standard are suitable for use in welding and allied processes.
- The garments are tested to withstand at least 15 drops of molten metal, and have a maximum temperature rise of 40°C on the back of the fabric. The test includes limited flame spread.
- Offer protection against brief contact with heat and flame. The heat can be convective, radiant, molten material, or a combination thereof:

The garment is classified for the following parameters:

- (A) Limited Flame Spread
  - (B) Convective Heat, a scale of 1-5 where 5 is the highest
  - (C) Radiant Heat, Scale 1-4, where 4 is the highest
- BS EN 116.

## FLAME RETARDANT HOOD LONG - P3950



### FEATURES

- Front fastening
- Adjustable
- Lined Hood
- Navy Blue
- Longer Cape

335g 100% Cotton fabric with flame retardant treatment

### STANDARDS

- BS EN 11612:2008
- BS EN 1161:2007
- BS EN ISO 14116:2008



A1 B1 C1

## EVERYDAY FLAME RETARDANT HOOD - P3942



### FEATURES

- Front fastening
- Adjustable
- Navy Blue

335g 100% Cotton fabric with flame retardant treatment

### STANDARDS

- BS EN 11612:2008
- BS EN 1161:2007
- BS EN ISO 14116:2008



A1 B1 C1



# BANDANA



NEW



DURABLE FLAME TREATED COTTON

STOCK CODE P3960

ONE SIZE ONLY

FEATURES

335g 100% Cotton  
fabric with flame  
retardant treatment

# SPECTACLES

Parweld's range of protective eye wear offers the user a lightweight range whilst ensuring maximum comfort and safety. Features include a moulded nose bridge, fully seamless and soft grips. All eye wear and visors are certified to BS EN 166 tested.

## DEFINITION

BS EN 166:2002

The product must:

- Conform to the correct mechanical strength
- The correct use and optical performance
- All Parweld eye wear is impact rated F and Optical Class 1

Eye Protector	Heightened Robustness Impact Velocity 12m/s	Low Energy Impact Velocity 45m/s	Medium Energy Impact Velocity 120m/s	High Energy Impact Velocity 190m/s
Spectacles	✓	✓	x	x
Goggles	✓	✓	✓	x
Face Shield	✓	✓	✓	✓
Classification (lens)	S	F	B	A
Classification (frame)		F	B	A

Eye Protector	Liquid Droplets & Splashes	Large Dust Particles	Gas & Fine Dust Particles	Molten Metal & Hot Solids	Optical Performance
Spectacles	x	x	x	x	1
Goggles	✓	✓	✓	✓	1
Face Shield	✓	x	x	✓	1
Classification (lens)				9	
Classification (frame)	3	4	5	9	

## BLACK NYLON FRAME POLYCARBONATE FRAME

### FEATURES

- Optical Class 1
- Low Profile
- Wrap Around Sports Design
- Moulded Nose Bridge
- Comfortable Flexible Frame
- 99.9% UV Protection

### STOCK CODE

- P3400 - Clear
- P3400A - Amber
- P3400S - Smoked
- P3400-5 - Welding shade 5

### STANDARDS

- BS EN166:2002 1F



## SPORTS STYLE SPECTACLE - P3442R (RED)/P3442 (BLUE)



### FEATURES

- Optical Class 1
- Low profile
- Panoramic vision
- Cushioned side arms
- Moulded nose bridge
- Lightweight
- 99.9% UV protection
- Supplied with neck cord

NYLON FRAME WITH METALLIC PAINT / CLEAR POLYCARBONATE LENS

### STANDARDS

BS EN166:2002 1F



## CLEAR VISITOR SPECTACLES - P3430



### FEATURES

- Optical class 1
- Vented side shields
- Lightweight Polycarbonate lens
- Can be worn over prescription spectacles

### STANDARDS

- Conforms to BS EN 166:2002 1FT

Polycarbonate frame & lens

## CLEAR SAFETY SPECTACLES - P3420



### FEATURES

- Optical Class 1
- Black nylon frame with internal brow guard
- Panoramic vision
- Adjustable arms
- Non-slip nose piece

### STANDARDS

- Conforms to BS EN 166:2002 1FT

Black nylon frame clear polycarbonate lens

## NYLON BLACK FRAME SPECTACLE



### FEATURES

- Optical Class 1
- Low profile, panoramic vision
- Wrap around sports & anti-scratch design
- Cushioned & adjustable side arms
- C/w neck cord

### STOCK CODE

- P3410
- P3410A
- P3410S

### STANDARDS

- Conforms to BS EN 166:2002 1FT

Nylon frame polycarbonate lens

# GOGGLES

## PANORAMIC SAFETY GOGGLE DIRECT - P3300D



### FEATURES

- Designed for impact protection
- Clear PVC frame With direct ventilation
- Can be worn over prescription spectacles
- Adjustable strap

### PVC

### STANDARDS

- Conforms to BS EN 166:2002 1-49BT

## CLEAR SKI GOGGLE - P3305



### FEATURES

- Optical Class 1
- Soft PVC seal for comfort
- Impact rating B
- Indirect ventilation
- Lightweight
- Can be worn over prescription spectacles
- Adjustable strap

### POLYCARBONATE LENS PVC SEAL STANDARDS

- Conforms to BS EN 166:2002 1B

## PANORAMIC SAFETY GOGGLE INDIRECT - P3300



### FEATURES

- Designed for impact protection
- Clear PVC frame with indirect ventilation
- Can be worn over prescription spectacles
- Adjustable strap

### PVC

### STANDARDS

- Conforms to BS EN 166:2002 1-49BT

## SKI TYPE WELDING GOGGLE - P3310



### FEATURES

- One piece goggle with soft moulded body
- Spatter resistant acetate lens
- Wide vision
- Shade 5 lens

### PVC

### STANDARDS

- BS EN 166:2002 & BS EN 169:2002

## 4 1/4" X 2" (108MM X 50MM) FLIP UP WELDING GOGGLE - P3390



### FEATURES

- One piece goggle with soft moulded body
- Flip front design
- Indirect vent PVC housing
- Clear and shade 5 lens

### STANDARDS

- BS EN 166:2002, BS EN 175:1997 and BS EN 169:2002

## ROUND LENS FLIP UP WELDING GOGGLE - P3330



### FEATURES

- One piece goggle with soft moulded body
- Flip front design
- Indirect vent PVC housing
- 50mm Polycarbonate lens
- Clear and shade 5 lens

### STANDARDS

- BS EN 166:2002, BS EN 175:1997 and BS EN 169:2002



# VISORS

## SHADE 3 VISOR - P3260-3



**STANDARDS**

- BS EN 166:2002 IB, and BS EN 169:2002

Size 8" x 12"

## SHADE 5 VISOR - P3260-5



**STANDARDS**

- BS EN 166:2002 IB, and BS EN 169:2002

Size 8" x 12"

## SHADE 5 VISOR - P3261-5



**STANDARDS**

- BS EN 166:2002 IB, and BS EN 169:2002

Size 8" x 15½"

## CLEAR VISOR - P3261



**STANDARDS**

- BS EN 166:2002 IB

Size 8" x 15½"

## BROW GUARD - P3266



## VISOR CARRIER WITH POSTS - P3263



For use with a Hard Hat

# EAR PROTECTION

## EAR DEFENDER - P3590



**STANDARDS**

- BS EN 352-1:2002

**FEATURES:**

- Comfortable noise reducing ear defender
- General purpose adjustable headband
- SNR = 24db

## FOAM EAR PLUG - P3500



**STANDARDS**

- BS EN 352-2:2002

**FEATURES:**

- Cylindrical soft foam, compress to fit, disposable ear plug
- Designed to provide the ultimate in comfort, SNR = 37db

# RESPIRATORY PROTECTION

Parweld's range of respirators protects the user from environmental risk against solids, as well as water and oil based aerosols. All Parweld respirators are certified to BS EN 149:2001 and CE certified.

Parweld moulded FFP masks have been designed with a preformed nose bridge and reinforcement strip providing a comfortable fit which eliminates the need for constant adjustment. All masks are fitted with a one way exhaust valve to minimise breathing resistance.

## DEFINITION

### BS EN 149:2001

There are three classes of protection detailed in EN149:2001:  
 • FFP1, FFP2 & FFP3 and filtering face pieces are classified according to filter efficiency.

FFP1	Low Efficiency	Protection Factor 4
FFP2	Medium Efficiency	Protection Factor 10
FFP3	High Efficiency	Protection Factor 20

## FFP3 MOULDED DUST/FUME/MIST RESPIRATOR C/W EXHALATION VALVE - P3130V



### STANDARDS

- BS EN 149:2001

### FEATURES

- Respiratory protection against low to average toxicity dust & powders
- Respiratory protection for fine particles with active carbon layer offering relief from ozone and low levels of gases and vapours below OEL limits
- Includes an exhalation valve to allow exhaled air to be vented from the mask without compromising protection
- Protection factor 20
- Adjustable head straps and nose piece

## FFP1 MOULDED DUST RESPIRATOR C/W EXHALATION VALVE - P3110V



### STANDARDS

- BS EN 149:2001

### FEATURES

- Respiratory protection against non toxic dusts and powders
- Includes an exhalation valve to allow exhaled air to be vented from the mask without compromising protection
- Protection factor 4
- Adjustable head straps and nose piece

## FFP2 MOULDED DUST RESPIRATOR C/W EXHALATION VALVE - P3121V



### STANDARDS

- BS EN 149:2001

### FEATURES

- Respiratory protection against non toxic dusts and powders
- Includes an exhalation valve to allow exhaled air to be vented from the mask without compromising protection
- Protection factor 10
- Adjustable head straps and nose piece

## FFP2 MOULDED ACTIVE CARBON RESPIRATOR C/W EXHALATION VALVE - P3122V



### STANDARDS

- BS EN 149:2001

### FEATURES

- Respiratory protection against low to average toxicity dust and powders
- Respiratory protection for fine particles with active carbon layer offering relief from ozone & low levels of gases & vapours below OEL limits
- C/w exhalation valve to allow exhaled air to be vented from the mask without compromising protection
- Protection factor 10
- Adjustable head straps and nose piece



# HAZARD PROTECTION

Parweld's range of welding blankets & curtains protect the user from accidents caused by welding sparks. All Parweld welding blankets conform to BS EN 1869:1997

## DEFINITIONS

BS EN ISO 1869:1997

## THE PRODUCT MUST:

- Protect workers whilst having the added benefit of shielding flammable materials, machinery, vehicles & plant & equipment from molten metal globules, spatter, etc. Welding blankets are reusable dependent upon the application.
- Parweld's welding curtains can be used to isolate an area offering protection to workers working outside of the welding area from welding sparks, UV/IR light welding spatter by creating a moveable welding bay.
- Parweld's safety apparel offers the users protection against the hazards in the workplace.

## ORANGE PVC WELDING CURTAIN



### STOCK CODE

**P3646O** - Size 1.2m x 1.8m (4ft x 6ft)

**P3666O** - Size 1.8m x 1.8m (6ft x 6ft)

**P3886O** - Size 2.4m x 1.8m (8ft x 6ft)

**P3610** - Curtain Rings

### FEATURES

- Low visibility dark green PVC welding curtain for MIG and TIG welding
- Supplied with eyelets on 4 sides
- UV Stabilised / PVC

### STANDARDS

- BS EN ISO 25980:2014

## STEEL FRAME



### STOCK CODE

**P3666FR** - Size 1.8m x 1.8m (6ft x 6ft)

**P3886FR** - Size 2.4m x 1.8m (8ft x 6ft)

**FR-EXT** - Steel Frame Extension 0.6m (2ft)

### FEATURES

- Steel Frame.

## GREEN PVC WELDING CURTAIN



### STOCK CODE

**P3646G** - Size 1.2m x 1.8m (4ft x 6ft)

**P3666G** - Size 1.8m x 1.8m (6ft x 6ft)

**P3886G** - Size 2.4m x 1.8m (8ft x 6ft)

**P3610** Curtain Rings

### FEATURES

- Low visibility dark green PVC welding curtain for MIG and TIG welding
- Supplied with eyelets on 4 sides
- UV Stabilised / PVC

### STANDARDS

- BS EN ISO 25980:2014

## CANVAS WELDING CURTAIN



### STOCK CODE

**P3646CG** - Size 1.2m x 1.8m (4ft x 6ft)

**P3666CG** - Size 1.8m x 1.8m (6ft x 6ft)

**P3886CG** - Size 2.4m x 1.8m (8ft x 6ft)

**P3610** Curtain Rings

### FEATURES

- Low visibility dark green canvas welding curtain for MIG and TIG welding
- Supplied with eyelets on 4 sides
- Green Canvas

### STANDARDS

- BS EN ISO 25980:2014

## WELDING BLANKET/ROLL

### WOVEN GLASS FIBRE WITH THERMAL TREATMENT



#### 600°C

#### STOCK CODE

**P3630**

50m x 1m

**P3621**

2000mm x 1000mm

**P3622**

2000mm x 2000mm

**P3623**

3000mm x 2000mm

#### FEATURES

- BS EN 1869:1997
- Provides protection from sparks and weld spatter
- 880G/Sq m

#### 1000°C

#### STOCK CODE

**P3631**

50m x 1m

**P3624**

2000mm x 1000mm

**P3625**

2000mm x 2000mm

#### FEATURES

- Provides protection from sparks and weld spatter
- 430G/Sq m

# XR935H

EVERYDAY LIGHT REACTIVE WELDING AND GRINDING HELMET



## FEATURES

- Slim and lightweight
- Automatic light adjustment from light to dark in 1/30,000th of a second
- Shade control from DIN9-13
- Variable sensitivity
- Grinding mode
- Variable delay
- Viewing area 100mm x 41mm (3.94" x 1.62")
- Full face coverage
- Suitable for TIG welding
- Automatic power on/off
- Built in battery
- UV/IR protection up to shade DIN 16
- Confirms to CE and BS EN 379:2003+A1:2009, BS EN 175:1997, EN 166:2002
- 12 months warranty

## CONFORMS TO EUROPEAN STANDARDS

The XR935H Light Reactive Helmet is independently certified to BS EN 379 and BS EN 175, EN 166, BS EN 379:2003+A1:2009, BS EN 175:1997, BS EN 166:2002.

## TECHNICAL DATA

Viewing Area	100mm x 41mm (3.94" x 1.62")
Cartridge Size	110mm x 90mm (4.33" x 3.54")
UV/IR Protection	Permanent Shade DIN16
Light State	DIN Shade 4
Dark State	DIN Shade 9 to 13 Variable
Power Supply	Solar cells with built in battery
Power On/Off	Fully Automatic
Switching Time Light to Dark	1/30,000 seconds
Dark to Light	0.1-1.0 seconds (Internal variable)
Operating Temp	-10C to +60°C (14°F to 140°F)
Storage Temp	-20°C to +70°C (-4°F to -158°F)
Helmet Material	High Impact Polyamide Nylon
Total Weight	466g
Min Amp Req	10A

## SPARES INFORMATION

STOCK CODE	DESCRIPTION
XR935H	Everyday Light Reactive Welding and Grinding Helmet
XR320	Front Cover Lens
XR350	Auto Darkening Filter Cartridge
XR330	Inside Cover Lens
XR370	Sweat Band
XR340	Adjustable Headband

## MOULDED CONSTRUCTION

The XR935H is both slim and lightweight in construction. Manufactured from a high impact polyamide nylon material which ensures the helmet provides high levels of comfort and durability.

Full Face Coverage and Solar Powered. A curved design with a clear spatter shield over the optics provides maximum clarity. The helmet is fully adjustable to suit all head and body types. Features full neck coverage, locking headgear and automatic power on/off switch. The helmet is powered by a solar cell, there is no need for external batteries or cables. Internal battery life expectancy is 6 years.

## FAST SWITCHING

The auto on wide view lens switches from light to dark in 1/30,000th of a second and offers continuous eye protection against UV and IR radiation, even in the light state mode. The grinding switch is conveniently located on the outside of the helmet. The switch locks the filter in the light state (Shade 4) to enable the helmet to be used as a grinding visor.

## FILTERS

The welding filter has 2 sensors that react independently as the welding arc is struck enabling the almost instantaneous darkening of the filter. The switching sensitivity knob is located on the inside of the helmet and allows the helmet to be tuned to work in different ambient light levels. All Parweld filters have a Shade 4 light state, ideal for welding preparation.



# XR937H

LARGE VIEW LIGHT REACTIVE WELDING AND GRINDING HELMET

NEW



## TECHNICAL DATA

Viewing Area	101mm x 94mm (3.98" x 3.7")
UV/IR Protection	Permanent Shade DIN 16
Light State	Shade DIN 4
Dark State	Shade DIN 5-9 to DIN 9-13 Variable
Power Supply	Solar Cells and Lithium Batteries
Power On/Off	Fully Automatic
Sensitivity	External Variable
Arc Sensors	4
Delay Time (Dark to Light)	0.1-1.0 Seconds Variable
Grinding	Yes, External
ADF Self-Testing	Yes
Lower Battery Alarm	Yes, LED Indicator Light
Operating Temp	-10°C +60°C
Storage Temp	-20°C +70°C
Total Weight	530g

## SPARES INFORMATION

STOCK CODE	DESCRIPTION
XR937H	Large View Light Reactive Welding and Grinding - Purple
XR9720	Front Cover Lens
XR9700	Auto Darkening Filter (ADF)
XR9730	Inside Cover Lens
XR9740	Head Band Assembly
XR1012	Sweat Band
XR363	Battery (2 required)

### FEATURES:

- Extra large viewing area
- True colour lens
- 4 arc sensors
- All external controls
- Variable shade control DIN 5-9/9-13
- ADF self-testing
- Dual solar cells
- UV/IR protection
- Automatic power fully automatic
- 24 months warranty
- Conforms to EN379, EN175, EN166, ANSI Z87.1

STANDARD LENS:



TRUE COLOUR LENS:



## MOULDED CONSTRUCTION

The XR937H is both slim and lightweight in construction. Manufactured from a high impact polyamide nylon material which ensures the helmet provides high levels of comfort and durability. The metallic paint finish ensures maximum heat reflection.

## LARGE VIEWING AREA

Allows the user to follow the weld seam with ease and allows extended use for grinding due to improved visibility.

## FAST SWITCHING

The auto on, auto darkening, wide view lens switches from light to dark in 1/30,000th of a second and offers continuous eye protection against UV and IR radiation, even when the lens is in the light state mode.

The grinding switch is conveniently located on the outside of the helmet. The switch locks the filter in the light state (Shade DIN 4) to enable the helmet to be used as a grinding visor.

## SOLAR POWERED

The helmet is powered by a solar cell with replaceable backup batteries.

## FILTERS

The welding filter has 4 sensors that react independently as the welding arc is struck enabling the almost instantaneous darkening of the filter.

The switching sensitivity knob is located on the outside of the helmet and allows the helmet to be tuned to work in different ambient light levels.

All Parweld filters have a Shade DIN 4 light state, ideal for welding preparation.

## CONFORMS TO EUROPEAN STANDARDS

The XR937H Large View Light Reactive Welding and Grinding Helmet is independently certified to BS EN 379 and BS EN 175, EN 166, BS EN 379:2003+A1:2009, BS EN 175:1997, BS EN 166:2002.





# XR938H

TRUE COLOUR LIGHT REACTIVE WELDING AND GRINDING HELMET



NEW

## FEATURES

- True colour lens
- Slim and lightweight
- Automatic light adjustment from light to dark in 1/30,000th of a second
- Shade control from DIN 5-13
- Variable sensitivity
- Grinding mode
- Variable delay
- Viewing area 100 x 53mm (3.94" x 2.08")
- Full face coverage
- Suitable for TIG welding
- Automatic power on/off
- Battery life expectancy 2 years
- UV/IR protection up to shade DIN 16
- 24 months warranty

## TECHNICAL DATA

Viewing Area	100 x 53mm (3.94" x 2.08")
Cartridge Size	110mm x 90mm (4.33" x 3.54")
UV/IR Protection	Permanent Shade DIN 16
Light State	DIN Shade 4
Dark State	DIN Shade 5 to 13 Variable
Power Supply	Built in solar cells and replaceable battery
Power On/Off	Fully Automatic
Switching Time Light to Dark	1/30,000 seconds
Dark to Light	0.1-1.0 seconds (External variable)
Operating Temp	-10°C to +60°C (14°F to 140°F)
Storage Temp	-20°C to +70°C (-4°F to -158°F)
Helmet Material	High Impact Polyamide Nylon
Total Weight	470g
Min Amperage Req	5A

## SPARES INFORMATION

STOCK CODE	DESCRIPTION
XR938H/P	True Colour Light Reactive Helmet - Purple
XR938H	True Colour Light Reactive Helmet - Silver
XR938H/BL	True Colour Light Reactive Helmet - Blue
XR938H/E	True Colour Light Reactive Helmet - Eagle
XR938H/F	True Colour Light Reactive Helmet - Flame
XR938H/R	True Colour Light Reactive Helmet - Red
XR720	Front Cover Lens
XR380	True Colour ADF 110mm x 90mm
XR730	Inside Cover Lens
XR770	Sweat Band
XR740	Adjustable Headband



XR938H



XR938H/BL



XR938H/R



XR938H/P



XR938H/E



XR938H/F

### MOULDED CONSTRUCTION

The XR938H is both slim and lightweight in construction. Manufactured from a high impact polyamide nylon material which ensures the helmet provides high levels of comfort and durability. The metallic paint finish ensures maximum heat reflection.

### FULL FACE COVERAGE

A curved design with a clear spatter shield over the optics provides maximum clarity. The helmet is fully adjustable to suit all head and body types. Features full neck coverage, locking headgear and automatic power on/off switch.

### FAST SWITCHING

The auto on, auto darkening, wide view lens switches from light to dark in 1/30,000th of a second and offers continuous eye protection against UV and IR radiation, even when the lens is in the light state mode.

The grinding switch is conveniently located on the outside of the helmet. The switch locks the filter in the light state (Shade DIN 4) to enable the helmet to be used as a grinding visor.

### SOLAR POWERED

The helmet is powered by a solar cell with replaceable backup battery.

### FILTERS

The welding filter has 4 sensors that react independently as the welding arc is struck enabling the almost instantaneous darkening of the filter. The switching sensitivity knob is located on the inside of the helmet and allows the helmet to be tuned to work in different ambient light levels. All Parweld filters have a Shade 4 light state, ideal for welding preparation.

### CONFORMS TO EUROPEAN STANDARDS

The XR938H True Colour Light Reactive Welding and Grinding Helmet is independently certified to BS EN 379 and BS EN 175, EN 166, BS EN 379:2003+A1:2009, BS EN 175:1997, BS EN 166:2002.

### STANDARD LENS:

### TRUE COLOUR LENS:



**Arc welding generates visible light, infrared and ultra violet radiation, which can damage eyes and skin. The Parweld XR938H True Colour Light Reactive Welding Helmet offers the latest innovative protection for the welder.**



# XR940A

POWERED AIR PURIFYING RESPIRATOR FOR PARTICULATE ENVIRONMENTS

NEW



## TECHNICAL DATA

Air flow rate	170 or 220nl/min
Material	PC + ABS
Motor	Brushless
Fuse	Electronic
Battery	Li-ion 14.8V rechargeable
Battery Charging time	Approx 2.5h
Charging Cycles	>350
Run time	11 hour @ 170nl/min 9 hour @ 220nl/min (min fully charged new battery & filter room temp.)
Noise	Max. 60dB(A)
Voltage/Capacity	14.8V/2.2Ah
Pre filter	Carbon (odour)
Weight	288g (1097g incl. Filter and Battery)
Dimensions	224 x 190 x 70 mm (MAX)
Air hose length	850mm
Master Filter Type	P3 TH3P R SL for TH3P system (Europe)
Standards	EN12941:1998/A1:2003/ A2:2008 TH3 P R SL

## SPARES INFORMATION

STOCK CODE	DESCRIPTION
XR940A	Unit with carry bag, large view welding & grinding helmet & universal charger
XR1002	Helmet
XR1003	Blower Unit
XR1004	Filter Cover
XR1005	Spark Arrestor
XR1006	Carbon Pre-filter
XR1007	P3 Hepa filter
XR1008	Waist Belt and Shoulder Harness
XR1009	Air Hose and Connectors
XR1010	FR Hose Cover
XR1011	Head Gear c/w Air Duct
XR1012	Sweat Band
XR1013	Head Gear Fixing Kit
XR1014	Face Seal and Fixings
XR1016	Battery
XR1017	Charger
XR9720	Inside Cover Lens
XR9730	Front Cover Lens

## FILTRATION

The unit is fitted with a P3 Particulate main filter coupled with a carbon odour pre filter & a stainless steel spark trap to preserve the filters, all filters are replaceable. Filter lifetime is dependant upon the working environment. The unit is not suitable for operation in areas where the oxygen supply is depleted or risk of toxic gas build up. TH3P Protection factor 500

## TH3P FILTER APPLICATIONS

- Metal Grinding & cutting applications
- Welding of Aluminium by MIG or TIG process
- Welding of Stainless Steel MIG & TIG processes
- Welding of steel by MMA, MIG or TIG
- Welding of Zinc coated steel by MIG or TIG

XR940A is a battery powered air purifying respirator for protection against dust and particles. This system is TH3P certified in accordance with European standard EN12941: 1998/A 1:2004/A2:2008 TH3P

**FEATURES:**

XR940A supplies clean air reducing the effort required to breathe in fume environments. The electronic system for controlling the airflow monitors the blower in order to ensure a constant flow of min.170nl/min\*. The operating time of XR940A with a fully charged battery depends on the & filter state but run time on the low setting is normally more than 11 hours & 9 hours on the high setting.

Has enhanced warning signals, optical and audible alarms for low power, clogged filter and reduced airflow. The welding helmet features a multi adjustable headband with enhanced supports to spread the load evenly on the wearers head, vibration warning for low air flow.

Comes with the XR937H true colour cartridge for enhanced clarity.

Support provided by removable shoulder straps.



SIMPLE AND CLEAR STATUS DISPLAY

SMOOTH & ULTRA-QUIET BRUSHLESS MOTOR

VARIABLE AIRFLOW SPEED CONTROL

REMOVABLE LI/ION BATTERY RUN TIME 10HRS+



EASY TO OPERATE CONTROLS

SUPPLIED WITH A P3 MAIN FILTER, ACTIVATED CARBON PRE FILTER AND METAL SPARK ARRESTER

LIGHT WEIGHT, LESS THAN 1.1KG

**PARWELD TV**  
 See the XR940A in action on Parweld TV, Parweld's exclusive YouTube Channel





# GLASS FILTER LENSES

Designed for use with welding helmets to protect the users eyes. Should always be used in conjunction with a clear cover lens.



**STANDARD**  
BS EN 169:2002,  
BS EN 166:2002  
Size 108mm x 50mm  
(4¼" x 2")



**STANDARD**  
BS EN 169:2002,  
BS EN 166:2002  
Size 108mm x 82mm  
(4¼" x 3¼")



**STANDARD**  
BS EN 169:2002,  
BS EN 166:2002  
Size 133mm x 114mm  
(5¼" x 4½")

STOCK CODE	SHADE
LS0850	8
LS0950	9
LS1050	10
LS1150	11
LS1250	12
LS1350	13

STOCK CODE	SHADE
LS0882	8
LS0982	9
LS1082	10
LS1182	11
LS1282	12
LS1382	13

STOCK CODE	SHADE
LS0813	8
LS0913	9
LS1013	10
LS1113	11
LS1213	12
LS1313	13



**STANDARD**  
BS EN 169:2002, BS  
EN 166:2002  
Size 108mm x 82mm  
(4¼" x 3¼")



**STANDARD**  
BS EN 169:2002,  
BS EN 166:2002  
Size 110mm x 60mm  
(4.3" x 2.4")



**STANDARD**  
BS EN 169:2002,  
BS EN 166:2002  
Size 110mm x 90mm  
(4.3" x 3.5")

STOCK CODE	SHADE
LS0855	8
LS0955	9
LS1055	10
LS1155	11
LS1255	12
LS1355	13

STOCK CODE	SHADE
LS0860	8
LS0960	9
LS1060	10
LS1160	11
LS1260	12
LS1360	13

STOCK CODE	SHADE
LS0890	8
LS0990	9
LS1090	10
LS1190	11
LS1290	12
LS1390	13

# CLEAR COVER LENSES



Designed for use with welding helmets to protect the filter lens from spatter.

## CLEAR CR39 COVER LENS

STOCK CODE	SIZE
LCR3950	108 x 50mm (4¼ x 2")
LCR3982	108 x 82mm (4¼ x 3¼")
LCR3933	133 x 114mm (5¼ x 4½")

STANDARD

BS EN 166:2002 1S

## CLEAR GLASS COVER LENS

STOCK CODE	SIZE
LC0050	108 x 50mm (4¼ x 2")
LC0082	108 x 82mm (4¼ x 3¼")
LC1055	110 x 55mm
LC0133	133 x 114mm (5½ x 4¼")
LC1060	110 x 60mm
LC1090	110 x 90mm

STANDARD

BS EN 166:2002 1

## DIOPTER LENS

STOCK CODE	MAGNIFICATION
LD1050	1.0
LD1550	1.5
LD2050	2.0
LD2550	2.5
LD3050	3.0

STANDARD

BS EN 166:2002 1F

## CLEAR POLYCARBONATE COVER LENS

STOCK CODE	SIZE
LP0047	103mm x 47mm
LP0050	108 x 50mm (4¼ x 2")
LP0060	110 x 60mm
LP0082	108 x 82mm (4¼ x 3¼")
LP1033	114 x 133mm (4¼ x 5¼")

STANDARD

BS EN 166:2002