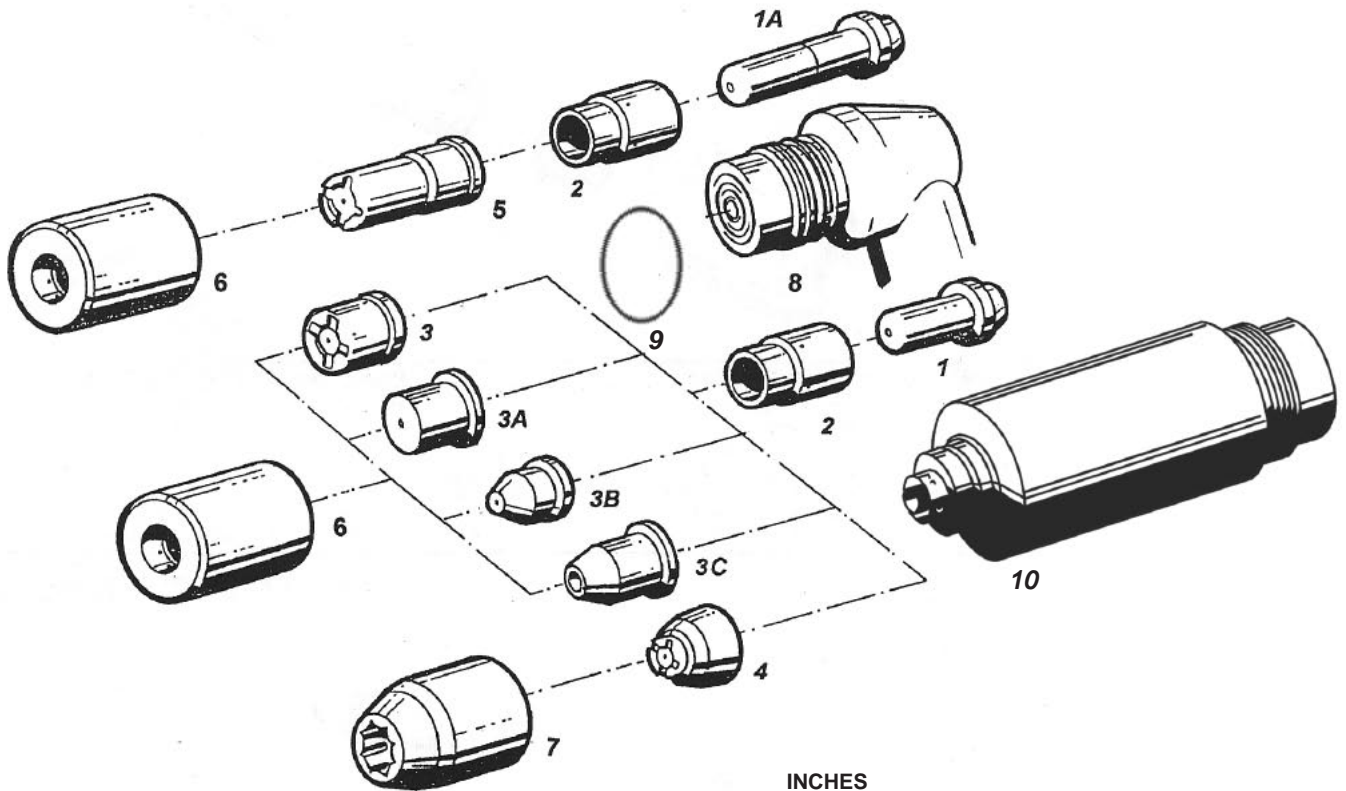
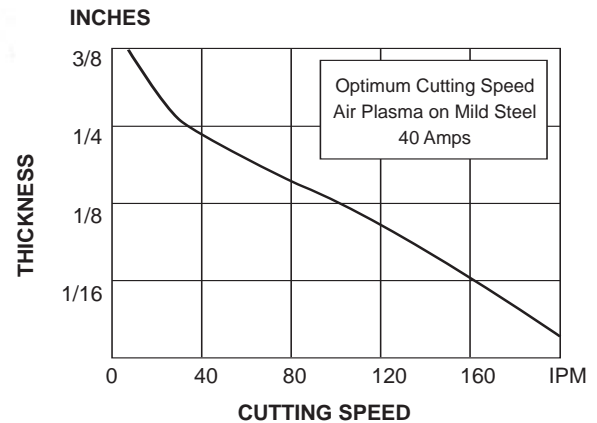


# HYPERTHERM MAX-40 (PAC 140)



**REQUIREMENTS:**  
 Gas: Air, Nitrogen  
 Pressure: 60 psi  
 Flow: 4,0 scfm

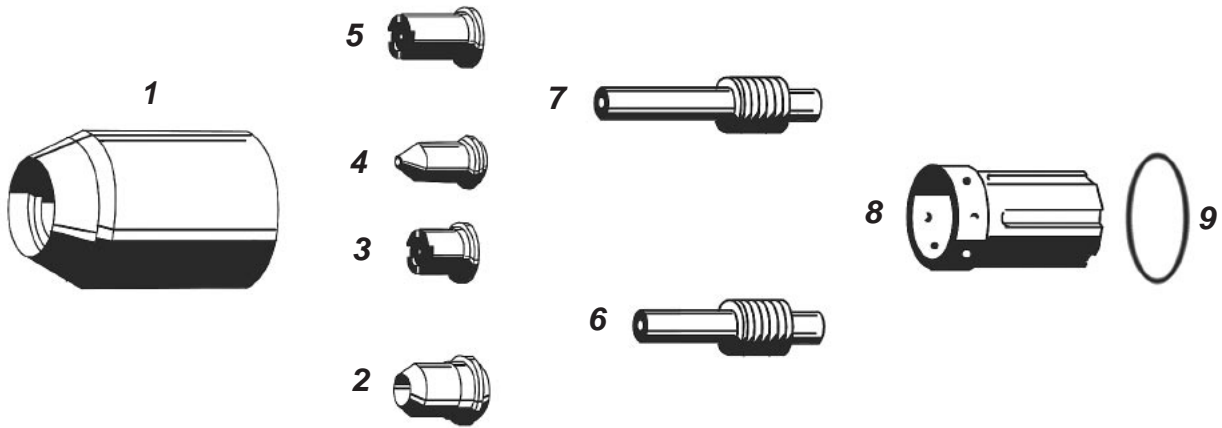


**NOTE: LONG ELECTRODES MUST BE USED WITH LONG NOZZLES, SHORT WITH SHORT.**

KEY	PART No.	DESCRIPTION	KEY	PART No.	DESCRIPTION
1	020167	Electrode (Nitrogen)	6	020104	Retaining Cap
	020103	Electrode (Air)	7	020200	Retaining Cap (HI-VIS)
1A	020467	Long Electrode (Air)	8	020122	Hand Cutting Torch
2	020101	Swirl Ring	N/S	026016	O-Ring
3	020115	Nozzle/Tip (Castle Hand)	9	044016	O-Ring
3A	020102	Nozzle/Tip(Mach.Cutting)	10	020114	Machine Cutting Torch
3B	020131	Nozzle/Tip (Pipe)	N/S	057012	75° H. Torch W/25' Leads
3C	020340	Nozzle/Tip (Gouging)	N/S	057053	Machine W/25' Leads
4	020197	Nozzle/Tip (Hi-Vis)	N/S	020120	Handle
5	020466	ExtendedNozzle	N/S	020122	Use Part #057114
			N/S	028292	Spare Parts Kit

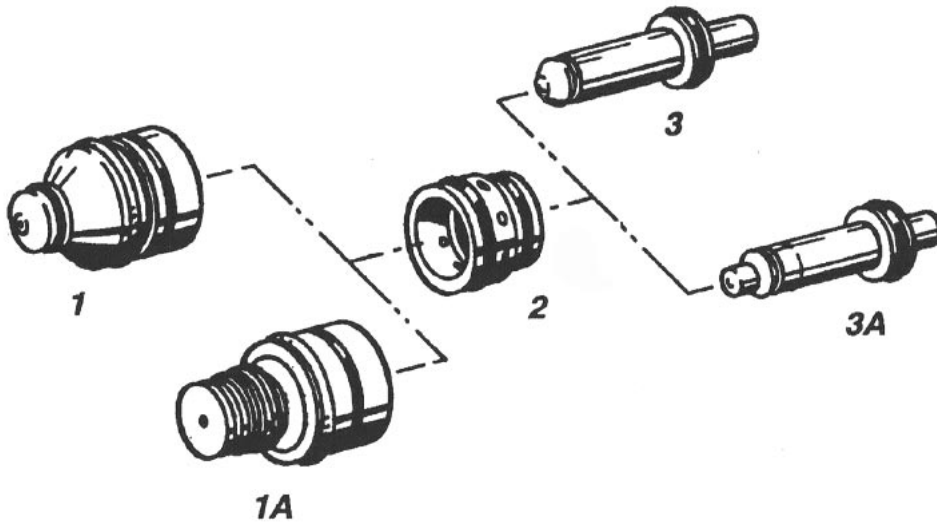
COMPLETE TORCHES AND/OR LEADS AVAILABLE

# HYPERTHERM MAX40CS /MaX42 /MAX43



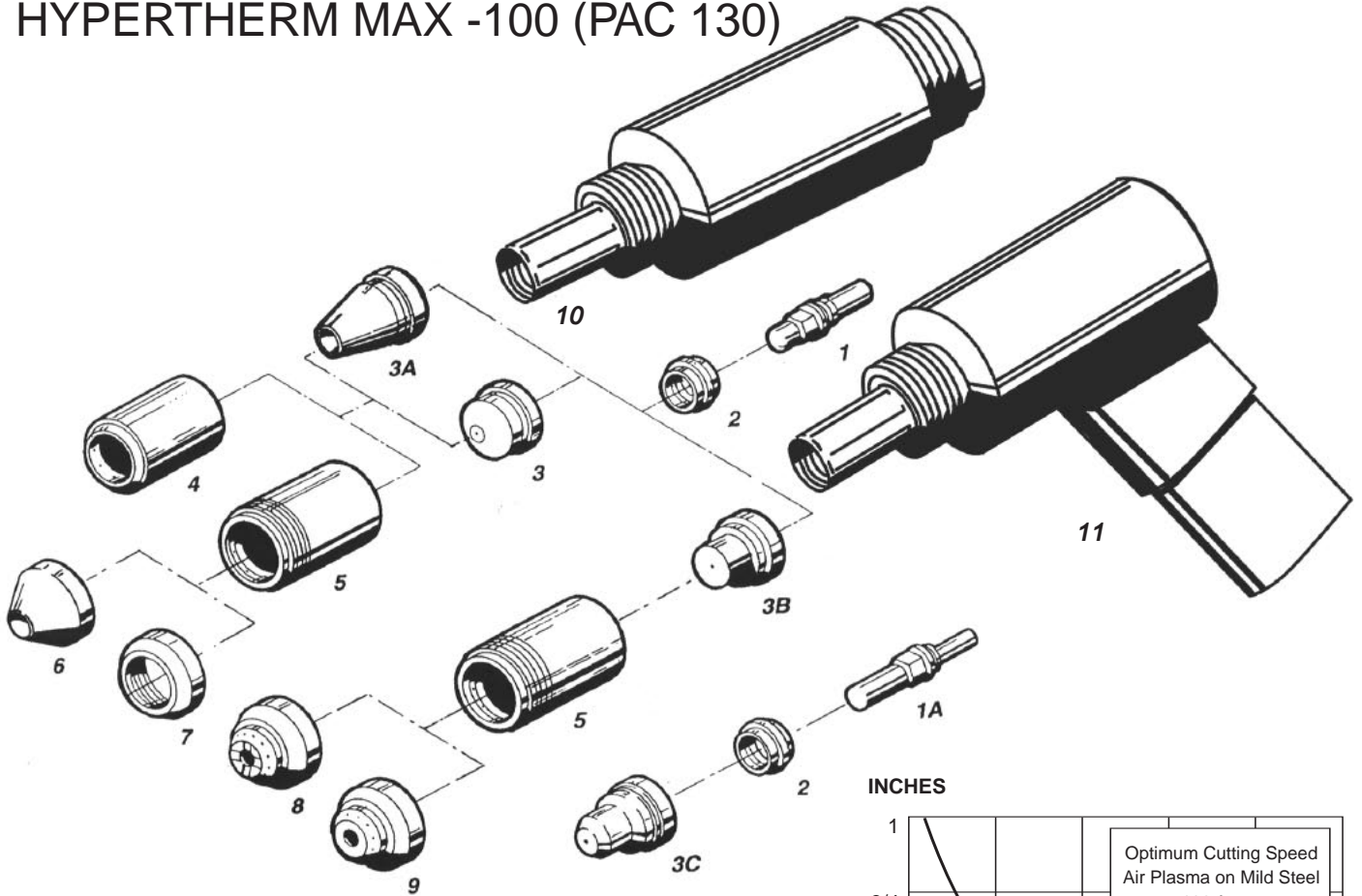
KEY	PART No.	DESCRIPTION	KEY	PART No.	DESCRIPTION
1	020364	Nozzle Retaining Cap	7	020547	Electrode - Extended (Air)
1	020930	Retaining Cap	8	020361	Swirl Ring
2	020539	Nozzle - Gouging	N/S	020480	Electrode - (Nitrogen)
3	020395	Nozzle/Tip - .042	9	044016	O-Ring
3	020350	Nozzle - 40 Amp	N/S	028413	Consumable Parts Kit
4	120023	Pipe Nozzle	N/S	020568	Torch Body With Switch
5	020546	Nozzle - Extended			
6	020351	Electrode- (Air)			

# HYPERTHERM HD-1070 (PAC 182)

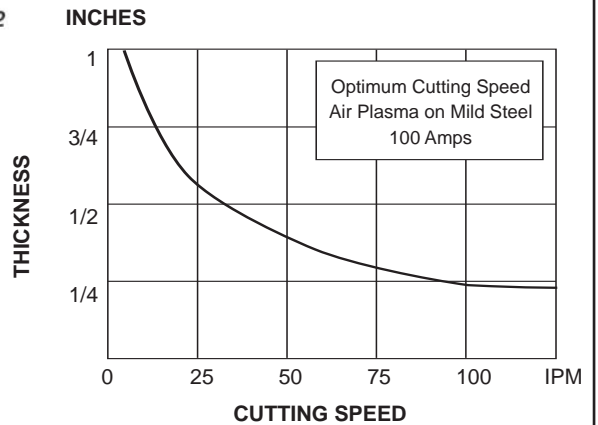


KEY	PART No.	DESCRIPTION	KEY	PART No.	DESCRIPTION
1	020644	Nozzle-H.D.15Amp	2	020637	Swirl Ring - H.D.
	020645	Nozzle-H.D.30Amp	3	120111	Electrode- H.D.15Amp
	020646	Nozzle-H.D.50Amp		120112	Electrode- H.D.50Amp
1A	020647	Nozzle-H.D.	3A	120113	Electrode-30A

# HYPERTHERM MAX -100 (PAC 130)



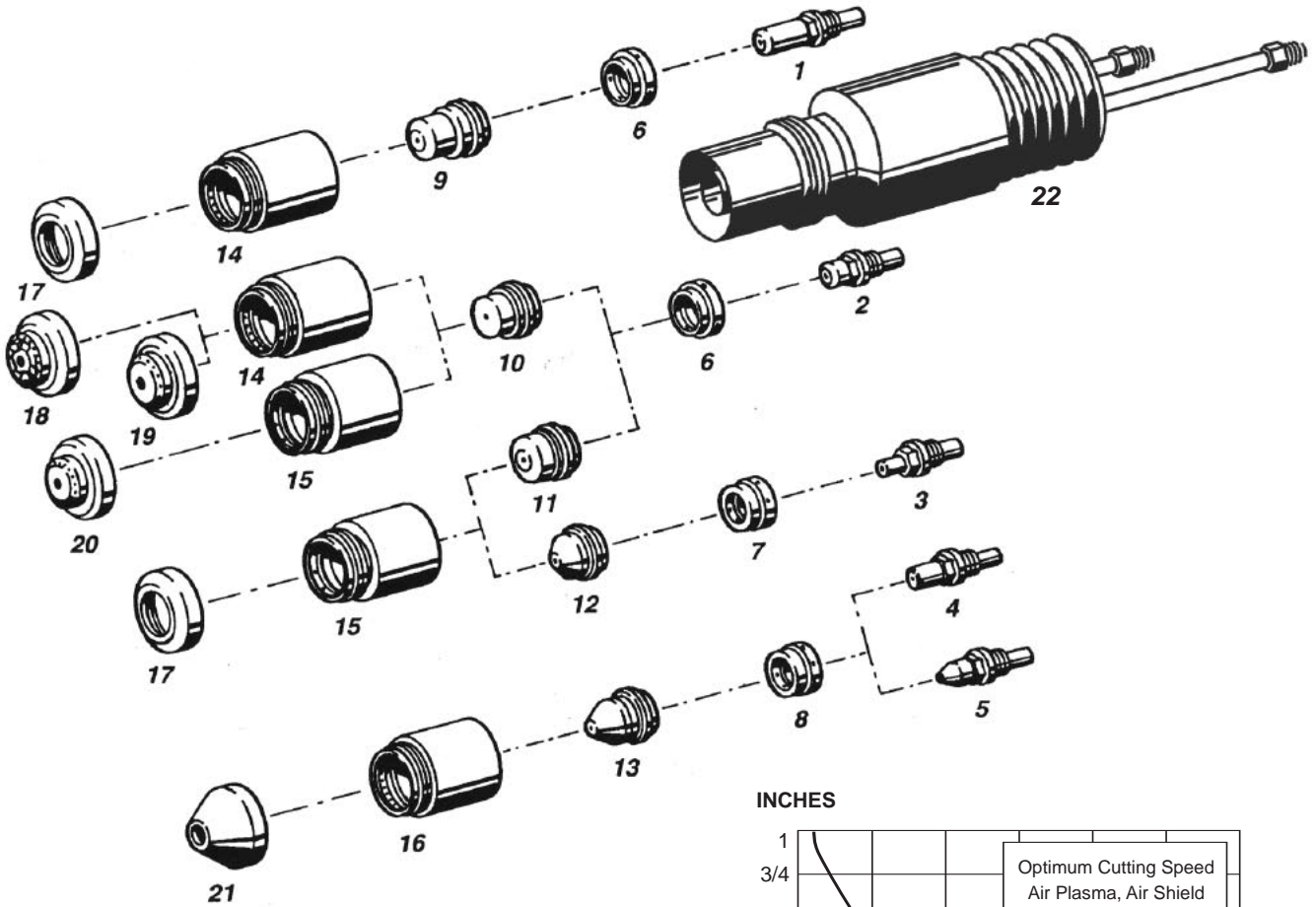
REQUIREMENTS:  
 Gas: Air, Nitrogen  
 Pressure: 60 psi  
 Flow: 7,2 scfm



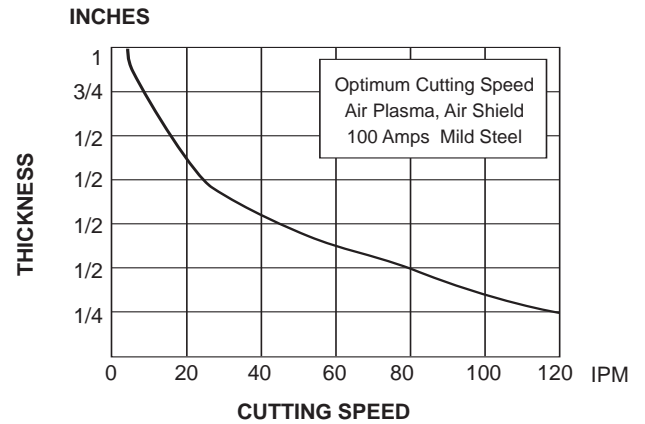
KEY	PART No.	DESCRIPTION	KEY	PART No.	DESCRIPTION
1	020191	Electrode - (Air)	6	020712	Deflector Shield Cap - Gouging
	020193	Electrode - (N2)	7	020333	Deflector Shield Cap
1A	020564	Electrode -Extended (Air)	8	020492	Shield Cap - 40Amp Mach.
2	020194	Swirl Ring		020335	Castle Cap - Shield Cap
3	020195	Nozzle/Tip - 100Amp	9	020334	Shield Cap - 80Amp Mach.
	020203	Nozzle/Tip - 40Amp	N/S	026018	O-Ring
	020345	Nozzle/Tip - 80Amp	N/S	058019	O-Ring
3A	020339	Nozzle/Tip - Gouging	10	020201	Machine Torch
3B	020337	Nozzle/Tip- 100Amp	N/S	028412	Consumable Parts Kit (80)
	020396	Nozzle/Tip - 40Amp	N/S	028325	Consumable Parts Kit
	020397	Nozzle/Tip - 80Amp	N/S	028375	Consumable Parts Kit
3C	020563	Nozzle/Tip- Extended	N/S	059078	Hand Torch Conversion Kit
4	020184	Retaining Cap	N/S	020461	Torch Head With Handle
5	020336	Sleeve -	N/S	027102	Wrench
		Shielded Cap Insulator	11	020189	Hand Torch
	020490	Sleeve -			
		Shielded Cap Insulator 40Amp			

COMPLETE TORCHES AND/OR LEADS AVAILABLE

# HYPERTHERM MAX-100D (PAC 160)

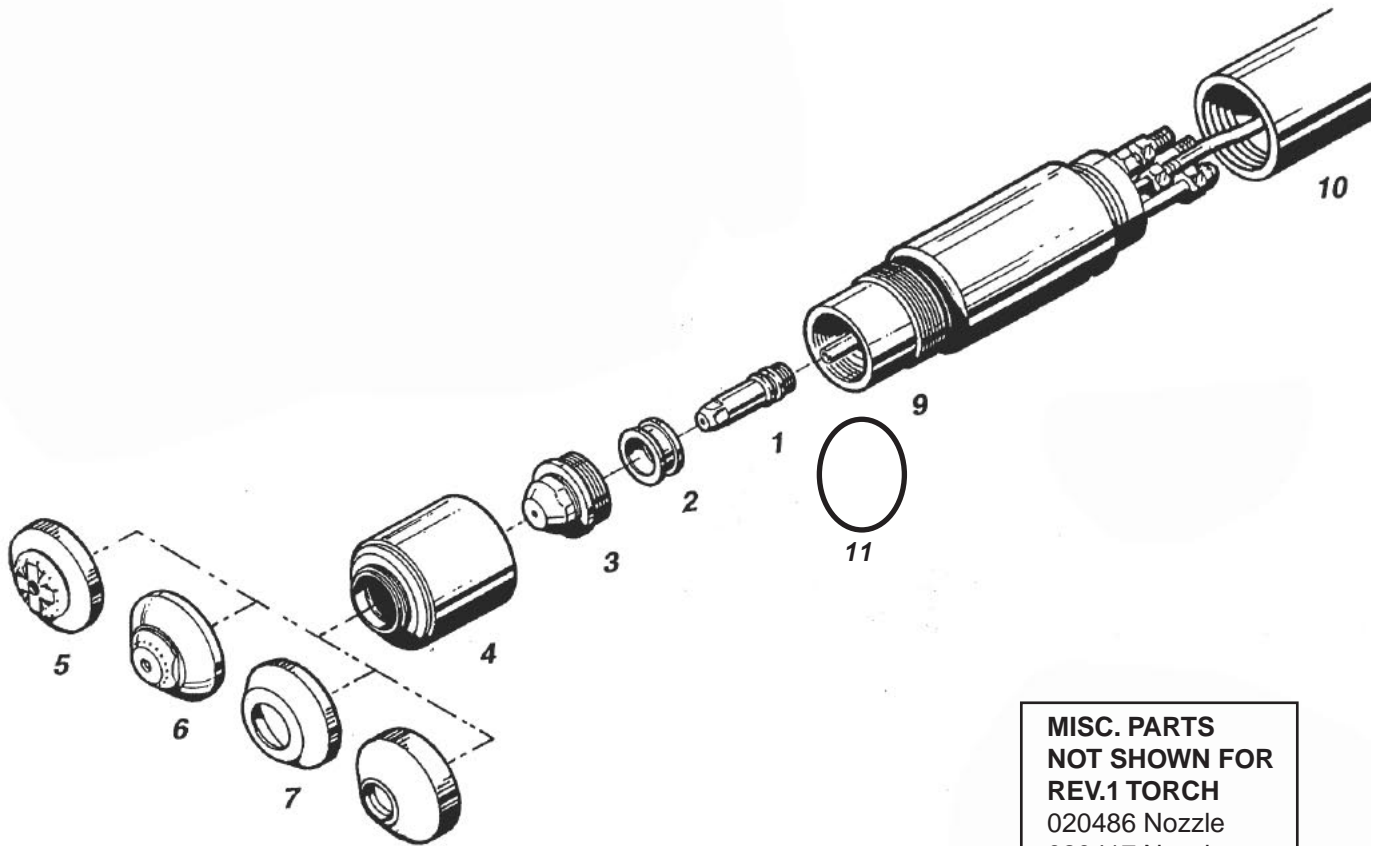


**REQUIREMENTS:**  
 Plasma Gas: Air, Nitrogen, A/H<sub>2</sub>  
 Shield Gas: Air, CO<sub>2</sub>, N<sub>2</sub>  
 Plasma Gas Pressure: 80 psi to 125 psi  
 shieldGas pressure: 80 psi to 125 psi



KEY	PART No.	DESCRIPTION	KEY	PART No.	DESCRIPTION
1	020564	Electrode Extended - (Air)	11	020922	Nozzle - Unshielded - 60Amp
	020887	Electrode Extended - (Nitrogen)	12	020921	Nozzle - Unshielded - 30/40Amp
2	020191	Electrode- (Air) -60-100Amp	13	020745	Gouging Nozzle
	020193	Electrode - Nitrogen-Argon/Hydrogen		020704	Gouging Nozzle
3	020951	Electrode -30/40Amp	14	020846	Retaining Cap - 100Amp
4	020744	Electrode- (Air)	15	020756	Retaining Cap - 60Amp
5	020703	Electrode - Argon/Hydrogen	16	020699	Retaining Cap - Gouging
6	020706	Swirl Ring	17	020333	Deflector - 100 - 60 - 30/40Amp
7	020950	Swirl Ring	18	020334	Shield - 100Amp - Mach
8	020750	Swirl Ring	19	020335	Shield- 100Amp- Hand
9	020754	Nozzle - Extended - 100Amp	20	020492	Shield - 60Amp - Mach/Hand
10	020705	Nozzle - Shielded - 100Amp	21	020712	Shield - 100Amp
	020753	Nozzle - Shielded - 60Amp	22	020713	Machine Torch

# HYPERTHERM MAX 200



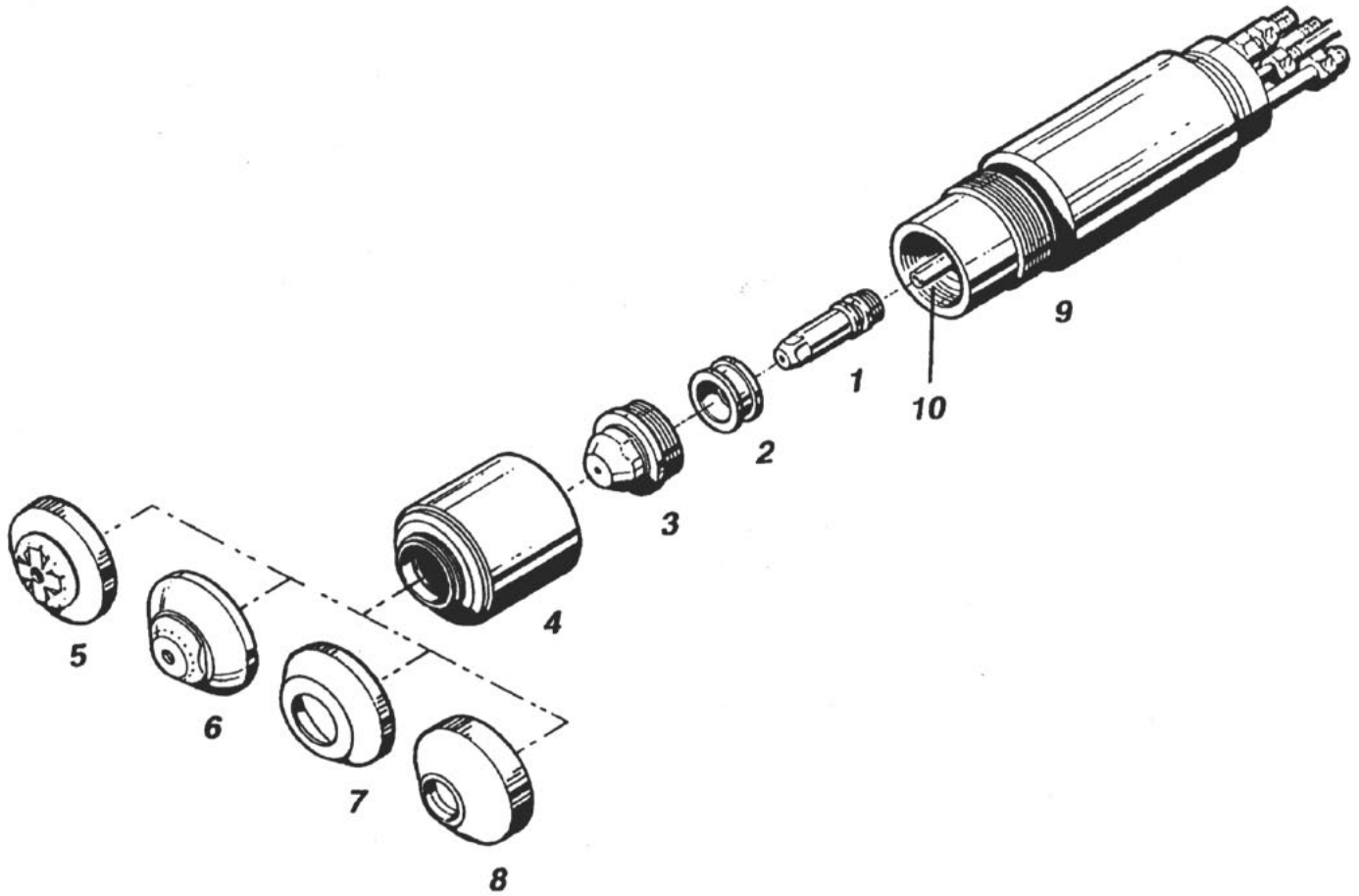
**MISC. PARTS  
NOT SHOWN FOR  
REV.1 TORCH**  
 020486 Nozzle  
 020417 Nozzle  
 020418 Nozzle  
 020447 Nozzle  
 020515 Nozzle  
 020416 Swirl Ring  
 020425 Swirl Ring

KEY	PART No.	DESCRIPTION	KEY	PART No.	DESCRIPTION
	020414	Electrode - Air, O <sub>2</sub>		020618	Shield Cap 100Amp Water Muffler
	020415	Electrode - N <sub>2</sub>		020566	Shield Cap 200Amp Water Muffler
2	020604	Swirl Ring - 200Amp O <sub>2</sub>	6	20424	Shield Cap 200Amp-.086
	020613	Swirl Ring - 40Amp Air		20602	Shield Cap AR/HYD
	020617	Swirl Ring - 100Amp O <sub>2</sub>	7	020688	Shield 40 Amp
	020607	Swirl Ring - 100/200Amp Air,N <sub>2</sub> ArH	8	020485	Shield Cap 200Amp-Gouging
3	020616	Nozzle - 100Amp O <sub>2</sub>	9	020470	Machine Torch Main Body
	020608	Nozzle - 200Amp Air,N <sub>2</sub> ArH	10	020431	Sleeve
	020605	Nozzle/Tip -200Amp O <sub>2</sub>	N/S	020484	90°Torch Body
4	020423	Shield Sleeve		020611ATTC	Nozzle - 100Amp Air,N <sub>2</sub> ArH
5	020446	Shield Cap 200Amp-Drag	11	044027	O-Ring

COMPLETE TORCHES AND/OR LEADS AVAILABLE

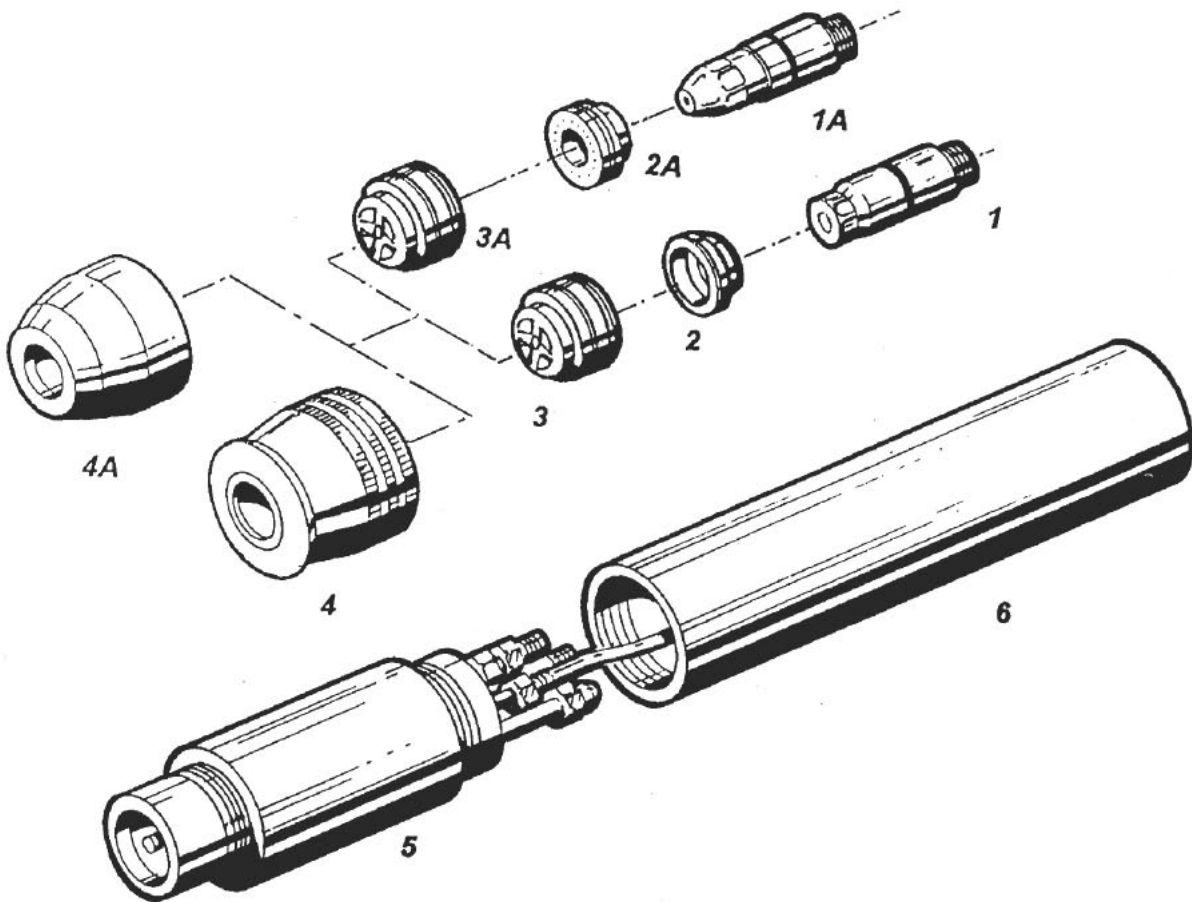


# HYPERTHERM HT-2000



KEY	PART No.	DESCRIPTION	KEY	PART No.	DESCRIPTION
	020664	Electrode O <sub>2</sub> Air	4	020423	Shield Sleeve
	020415	Electrode N <sub>2</sub> /H35	5	020446	Shield - 200Amp - Hand
2	020678	Swirl Ring - 200Amp -O <sub>2</sub>		020568	Water Muffler - 200Amp
	020679	Swirl Ring - 200Amp Air		020618	Water Muffler - 100Amp
	020607	Swirl Ring - 100/200Amp N <sub>2</sub> /Air H35		020448	Shield - 100Amp
	020613	Swirl Ring - 40 Amp Air/O <sub>2</sub>	6	020424	Shield Cap - 100/200Amp Mach.
3	020605	Nozzle - 200 Amp O <sub>2</sub> H35		020802	Shield Cap - 200AMP H35
	020608	Nozzle - 200 Amp Air N <sub>2</sub> H35	7	020688	Shield - 40Amp
	020611ATTC	Nozzle- 100Amp Air, N <sub>2</sub> ArH	8	020485	Shield Cap - 200Amp - Gouging
	020612	Nozzle - 40Amp Air	9	020470	Torch Body
	020615	Nozzle - 200Amp Gouging	10	020913	Water Tube
	020616	Nozzle - 100Amp O <sub>2</sub>			
	020689	Nozzle - 40 Amp Air			
	020690	Nozzle - 100Amp O <sub>2</sub>			

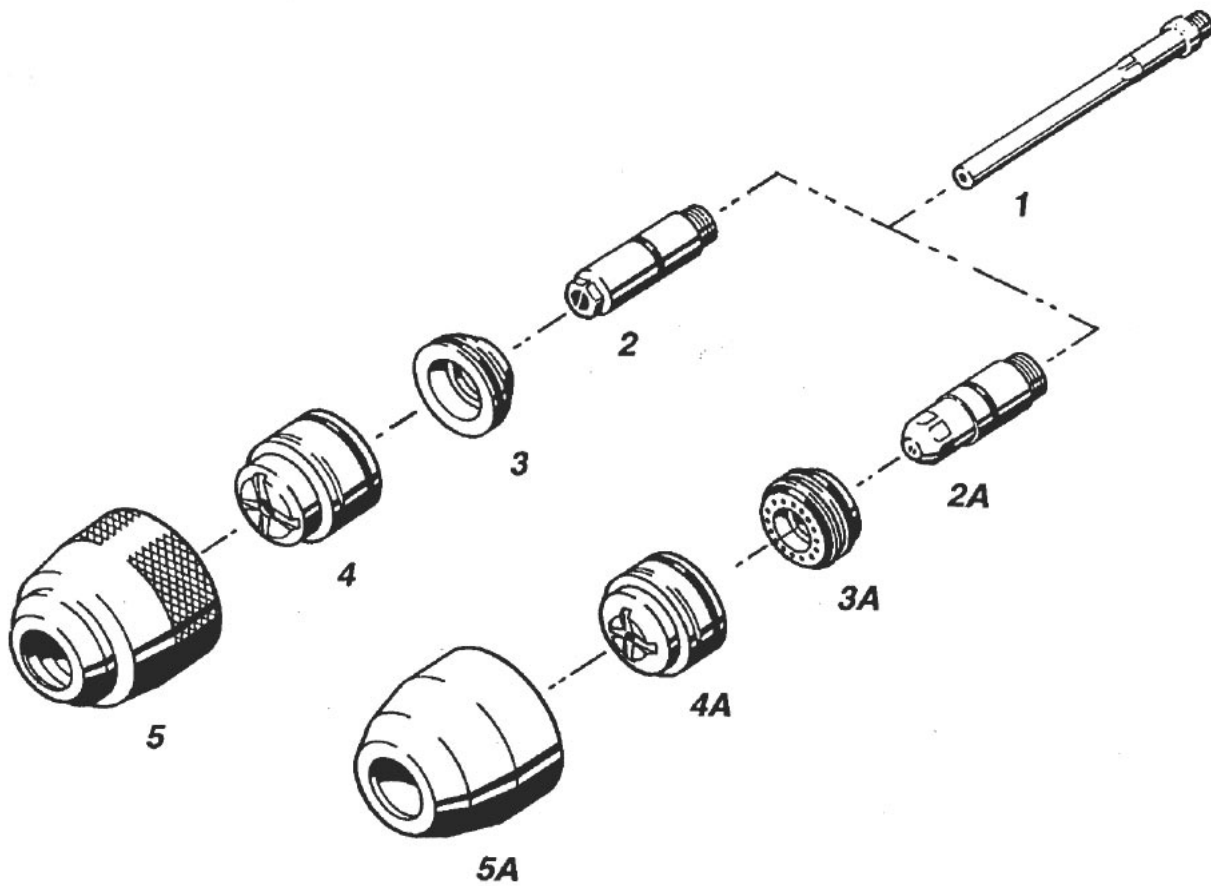
# HYPERTHERM HT-400



KEY	PART No.	DESCRIPTION	KEY	PART No.	DESCRIPTION
	020082	Electrode- Nitrogen	3A	020086	Nozzle/Tip- Oxygen.099
1A	020081	Electrode - O <sub>2</sub>		020392	NozzleOxygen .099 CCW
2	020039	Swirl Ring- N <sub>2</sub> - .120 - .187	4	020087	Nozzle Retaining Cap
	020042	Swirl Ring - N <sub>2</sub> - CCW .120 - .187	4A	020246	Nozzle Retaining Cap
2A	020096	Swirl Ring - Oxygen		020579	Nozzle Retaining Cap Vectra
	020097	Swirl Ring - Oxygen CCW	5	020080	Torch Main Body
	020380	Swirl Ring - .099		020080-R	Torch Main Body Rebuild
	020391	Swirl Ring- CCW- .099	6	020041	Sleeve - Insulator
3	020084	Nozzle/Tip - N <sub>2</sub> - .166			
	020089	Nozzle Tip - N <sub>2</sub> - .120			

COMPLETE TORCHES AND/OR LEADS AVAILABLE

# HYPERTHERM HT-4001

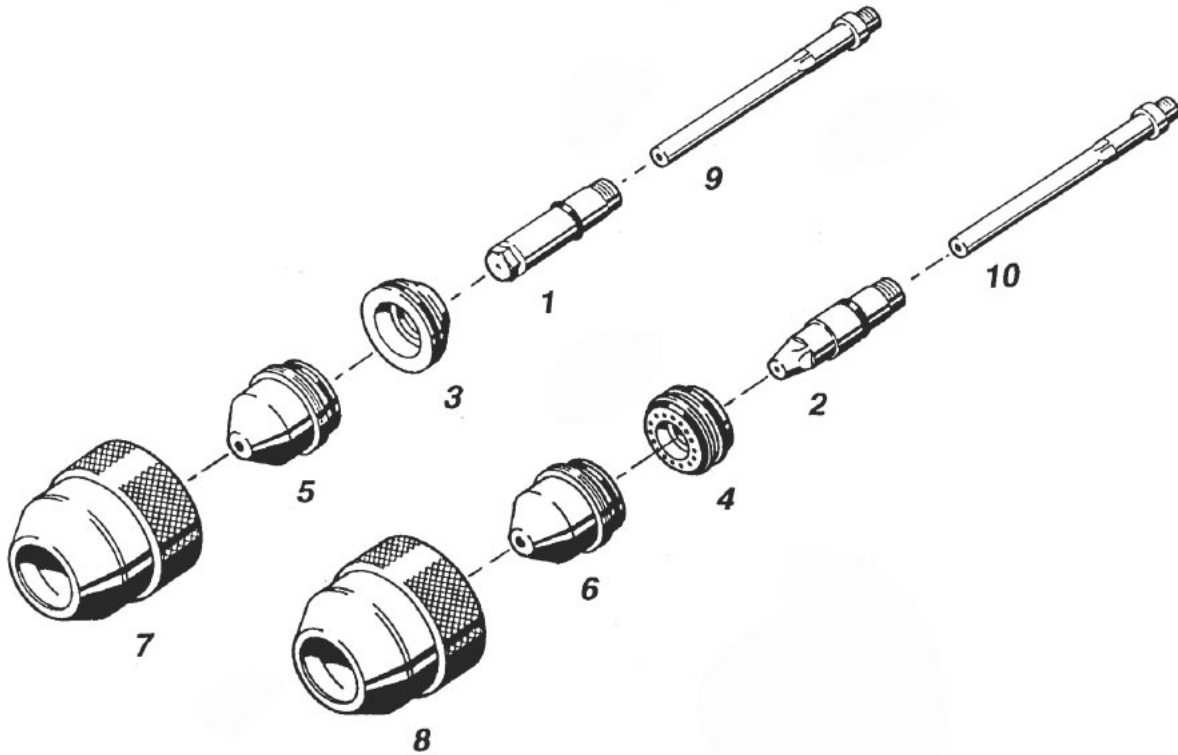


KEY	PART No.	DESCRIPTION	KEY	PART No.	DESCRIPTION
1	020990	Water Tube 400 / 600 / 170		020282	Nozzle - .166 N <sub>2</sub>
2	020285	Electrode - N <sub>2</sub>		020283	Nozzle - .187 N <sub>2</sub>
2A	020663	Electrode-O <sub>2</sub> - 260Amp		020284	Nozzle - .220 N <sub>2</sub>
	120090ATTC	Electrode - O <sub>2</sub> - 340 Amp		4A	020086 Nozzle - O <sub>2</sub>
3	020039	Swirl Ring - N <sub>2</sub> - .120 -.166 -.187	5	020580	Retaining Cap (Standard
		Vectra)			
	020042	Swirl Ring - N <sub>2</sub> - .120 -.166 -.187CCW		020286	Retaining Cap N2 Std. (Vespel)
	020079	Swirl Ring - N <sub>2</sub> - .220 CCW	5A	020579	Retaining Cap Tapered (Vectra)
	020040	Swirl Ring- N <sub>2</sub> - .220		020246	Retaining Cap Tapered (Vespel)
3A	020623	Swirl Ring - O <sub>2</sub> - 260 Amp			
	120135	Swirl Ring - O <sub>2</sub> -340 Amp			
4	020281	Nozzle- .120 N <sub>2</sub>			

COMPLETE TORCHES AND/OR LEADS AVAILABLE

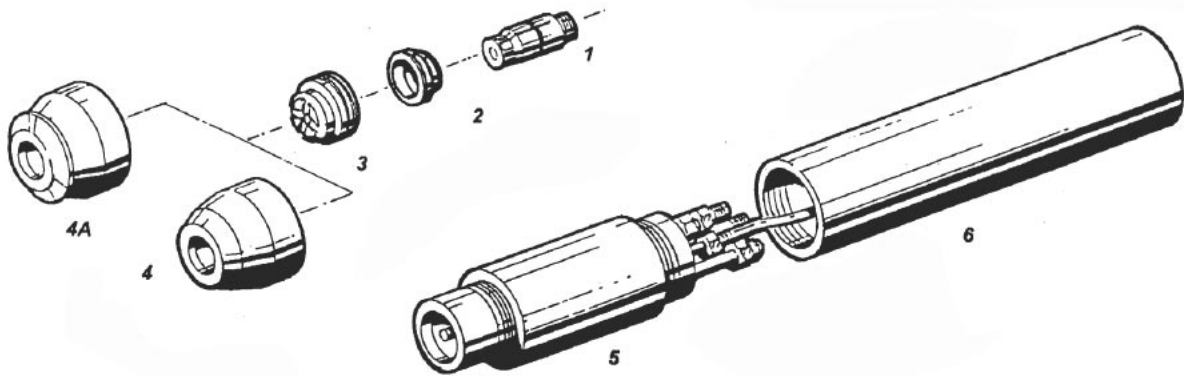


# HYPERTHERM HT-4001 PAC 620 /BEVELING



KEY	PART No.	DESCRIPTION	KEY	PART No.	DESCRIPTION
	020968	Electrode - N2		020966	Nozzle - N2-.187
2	020975	Electrode - O <sub>2</sub>		020967	Nozzle - N <sub>2</sub> - .220
3	020039	Swirl Ring - N <sub>2</sub> -.120 -.166 -.187 6		020973	Nozzle - O <sub>2</sub> - 099
	020042	Swirl Ring - N <sub>2</sub> -CCW -.120-.166-.187		020974	Nozzle- O <sub>2</sub> -CCW
	020040	Swirl Ring - N <sub>2</sub> -.220	7	120004	Retaining Cap - N <sub>2</sub> (Vectra)
	020079	Swirl Ring - N <sub>2</sub> -CCW -.220		020969	Retaining Cap - N <sub>2</sub> (Vespel)
4	020623	Swirl Ring - O <sub>2</sub>	8	120030	Retaining Cap - O <sub>2</sub> (Vectra)
	120015	Swirl Ring - O <sub>2</sub> -CCW		020029	Retaining Cap - O <sub>2</sub> (Vespel)
5	020964	Nozzle - N <sub>2</sub> -.120	9	020991	WaterTube - N <sub>2</sub>
	020965	Nozzle - N <sub>2</sub> -.166	10	020992	WaterTube - O <sub>2</sub>

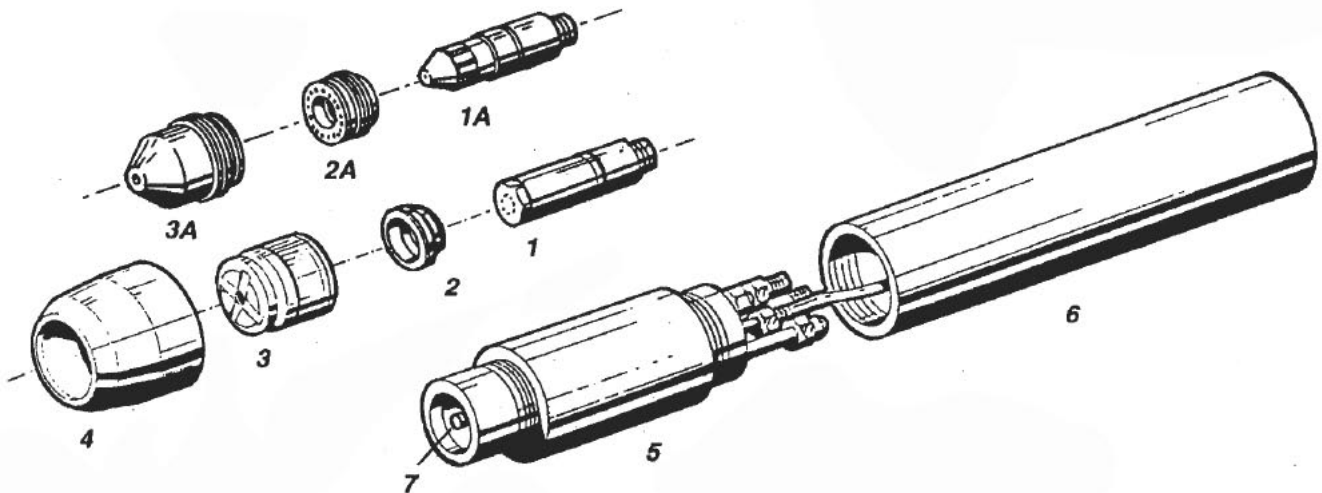
# HYPERTHERM PAC-500



KEY	PART No.	DESCRIPTION	KEY	PART No.	DESCRIPTION
	020038	Electrode		020050	Nozzle/Tip - .120
2	020039	Swirl Ring - .120 - .187	4	020034	Nozzle Retaining Cap Tapered
	020040	Swirl Ring- .220		020610	Retaining cap
	020048	Swirl Ring - .250	4A	020043	Nozzle Retaining Cap Flared
	020042	Swirl Ring - .120- .187 CCW	N/S	025028	O-Ring Kit
	020079	Swirl Ring - .220 CCW	5	020030	Torch Main Body
3	020035	Nozzle/Tip - .166	6	020030-R	Torch Main Body Rebuild
	020036	Nozzle/Tip - .187		020041	Insulator Sleeve
	020037	Nozzle/Tip - .220			
	020047	Nozzle/Tip - 250 Argon			

COMPLETE TORCHES AND/OR LEADS AVAILAEBLE

# HYPERTHERM PAC 600



KEY	PART No.	DESCRIPTION	KEY	PART No.	DESCRIPTION
1	020285	Electrode		020283	Nozzle-.187
1A	020721	Electrode		020284	Nozzle-.220
2	020039	Swirl Ring - .120- .187	3A	020719	Nozzle
	020040	Swirl Ring .220	4	020286	Retaining Cap
	020042	Swirl Ring - .120- .187 - CCW		020582	Retaining Cap Vectra
	020079	Swirl Ring - .220 - CCW		020579	Retaining Cap Tapered Vectra
2A	020720	Swirl Ring	5	020080	Torch Main Body
3	020281	Nozzle-.120	6	020041	Insulator sleeve
	020282	Nozzle - .166	7	020990	Water Tube



