



**parweld**<sup>®</sup>  
torch technology

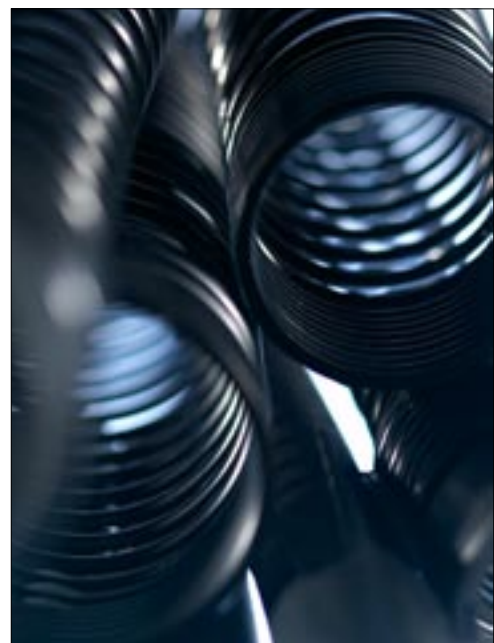
**BZL Mig Torch Range**

LUFTKJØLTE

			
SB 120 A	SB 140 A	SB 150A	SB 150 FLEX
			
SB 230 A	SB 240 A	SB 250 A	SB 250 A FLEX
			
SB 250 A ROTA	SB 260 A	SB 360 A	SB 360A ROTA
			
SB 380 A	SB 400 A	SB 610 A	SB 250 A AUTOM
			
SB 360 A AUTOM	SB 400 A AUTOM	PP 360 A	

Klikk på pistol for deleliste

## BZL Features and Benefits



## All standard with ours!

Thoughtful design and painstaking re-engineering lie behind Parwelds record of consistently successful product innovation.

State of the art development techniques and production equipment are used to produce the world's most comprehensive range of MIG/MAG torches.

Quality and product features are never compromised, in fact we go out of our way to engineer a range of standard features essential to the functionality, usability and service life of Parweld Mig Products.

### Operator comfort and whole day welding productivity depend on a combination of many factors.

#### Handles and Cable Supports

Designed to combine the ultimate in balance, positioning and ergonomics with practical torch performance, cable life and consistent wire feed.

Handle mass has been reduced wherever possible which combined with the correct ratio of cable support length and rigidity, provides the correct amount of feed, flexibility and overall product balance.

Design ergonomics are not restricted to the front end of a Mig torch exclusively.

In order to maximise productivity careful consideration has been given to the very different requirements at the rear end of a Mig torch.

All Parweld rear end systems have been designed to enable consistent feedability, quick fault analysis and rapid serviceability.

#### Hyperflex Cable Systems

Air cooled cable assemblies offer outstanding flexibility and the highest heat and abrasion resistance of any known cable.

Cable end and crimp systems ensure maximum conductivity whilst the outer jacket is constructed from cross-linked polymers providing a tear proof jacket and a burn threshold of 375°C.

#### Housing, Nuts and Supports

Tough and damage resistant, housings and nuts are formed in robust glass-reinforced polymers encasing all conductive parts in accordance with EN60974-7

Rigid, extra length cable support systems ensure smooth and consistent wire feed at any angle whilst the adoption of simple snap fits at all mating parts provides rapid access for fault analysis.

#### Hydroflex Cable Systems

Liquid cooled cable systems use high temperature-resistant rubber cable which when combined with unique cable end geometries ensure leak free terminations.

Parweld hydroflex cable systems outperform all PVC alternatives.

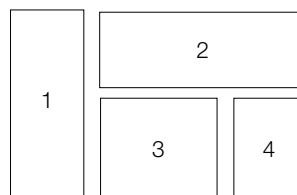
#### Terminations

All Parweld Euro Bodies are fitted with unbreakable spring loaded gun plug body pins as standard.

A comprehensive range of alternate rear ends ensures worldwide compatibility.

#### Hanger Hooks

Fitted as standard, they encourage the operator to hang the torch off the ground where it is easy to locate, less prone to damage and makes for a tidy, efficient workspace.



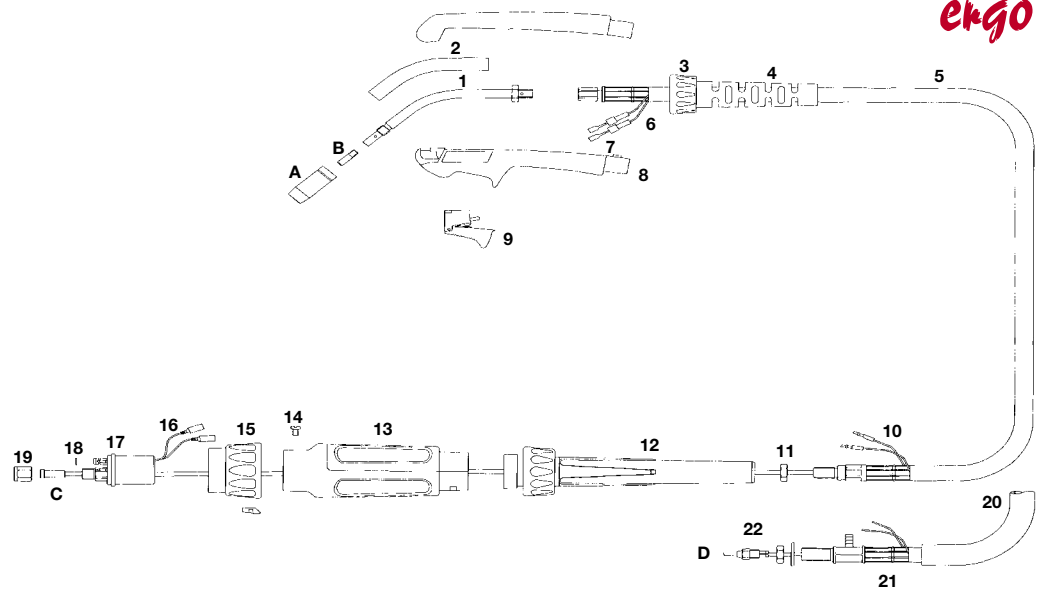
1. Ergo trigger system
  2. Hanger hooks
  3. Terminations
  4. Cable supports
- Opposite above right:  
Cable systems

### Intro & Contents

<b>SB120A</b>	1
<b>SB140A</b>	2
<b>SB150A</b>	3
<b>SB150A FLEX</b>	4
<b>SB230A</b>	5
<b>SB240A</b>	6
<b>SB250A</b>	7
<b>SB250A FLEX</b>	8
<b>SB250A ROTA</b>	9
<b>SB260A</b>	10
<b>SB360A</b>	11
<b>SB360A ROTA</b>	12
<b>SB380A</b>	13
<b>SB400A</b>	14
<b>SB610A</b>	15
<b>SB240W</b>	16
<b>SB350W</b>	17
<b>SB401W</b>	18
<b>SB501W</b>	19
<b>SB501W EXT</b>	20
<b>SB610W</b>	21
<b>SAB150A</b>	22
<b>SAB240A</b>	23
<b>SAB250A</b>	24
<b>SAB360A</b>	25
<b>SAB240W</b>	26
<b>SAB501W</b>	27
<b>SB250A AUTO</b>	28
<b>SB360A AUTO</b>	29
<b>SB400A AUTO</b>	30
<b>SB240W AUTO</b>	31
<b>SB501W AUTO</b>	32
<b>PP360A</b>	33
<b>PP400W</b>	34
<b>Handles</b>	35

# SB 120A Air Cooled MIG Welding Torch

Rating: 140A CO2 120A mixed gas, EN60974-7 @ 60% duty cycle. 0.6 to 0.8mm wires



**ergo**

Model		
Description	Part Number	
	3.0 M	4.0 M
Welding Torch c/w Euro fitting	B1200-30ER	B1200-40ER
Welding Torch c/w Telwin Termination	B1200-30TEL	N/A

Nozzles		
Part Number	Description	
A B1430*	Conical Nozzle Screw On	
B1431	Spot Welding Nozzle Screw On	

Contact Tips		
Part Number	Description	
B B1427-06*	Contact Tip .023"/0.6mm M5 Ecu	
B1427-08	Contact Tip .030"/0.8mm M5 Ecu	

Liners		
Part Number	Description	
C B1435-30*	Steel Liner .023"-.035"/0.6-0.8mm X 3mt	
B1435-40*	Steel Liner .023"-.035"/0.6-0.8mm X 4mt	
D B1436-30	Nylon Liner .023"-.035"/0.6-0.8mm X 3mt	
1436-40	Nylon Liner .023"-.035"/0.6-0.8mm X 4mt	

Components		
Part Number	Description	
1 B1401	Swan Neck	
2 B1402	Insulation Sleeve	
3 B8003	Handle Lock Nut	
4 B8011	Cable Support	
5 B1317-30	Hyperflex Cable Assembly X 3mt	
B1317-40	Hyperflex Cable Assembly X 4mt	
6 B1521-C	Cable Terminal Cover	
7 B1521	Cable Terminal	
8 B1414	Ergo Handle Kit c/w Lock Nut	
9 B1416	Small Ergo Trigger	
10 B1522	Cable Terminal Male	
11 B1505	Lock Nut	
12 B1841	Cable Support	
13 B1518	Gun Plug Housing c/w Nut	
14 B1526	Gun Plug Screw	
15 B1519PL	Gun Plug Nut - c/w Insert	
16 B1523	Gun Plug Terminal	
17 B1528	Gun Plug Body c/w Spring Pins	
18 B1524	Gun Plug 'O' Ring	
19 B1525	Liner Nut	
20 B1251	Strain Relief	
21 B1217-30TEL	Hyperflex Cable Assy X 3mt Tel	
22 B1522	Cable Terminal Male	

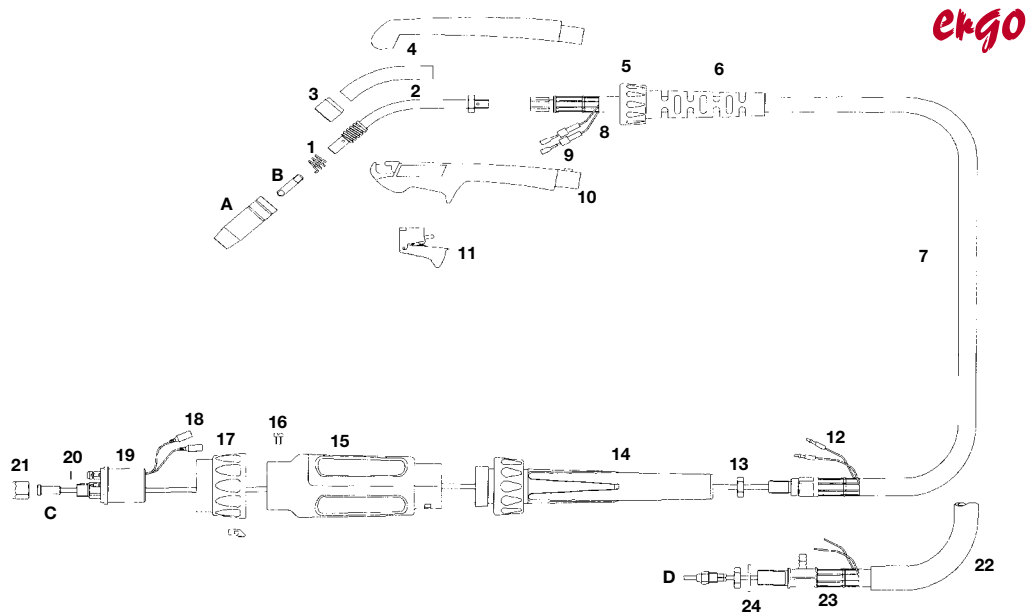
\* Denotes Standard Build



# SB 140A Air Cooled MIG Welding Torch



Rating: 160A CO<sub>2</sub> 140A mixed gas, EN60974-7 @ 60% duty cycle. 0.6 to 0.9mm wires



Model		
Description	Part Number	
	3.0 M	4.0 M
Welding Torch c/w Euro fitting	B1400-30ER	B1400-40ER
Welding Torch c/w Telwin Termination	B1400-30TEL	N/A

Nozzles		
Part Number	Description	
A B1529	Cylindrical Nozzle	
B1530*	Conical Nozzle	
B1531	Tapered Nozzle	
B1532	Bottle Nozzle	
B1533	Spot Welding Nozzle	

Contact Tips		
Part Number	Description	
B B1527-06	Contact Tip .023"/0.6mm M6 Ecu	
B1527-08*	Contact Tip .030"/0.8mm M6 Ecu	
B1527-09	Contact Tip .035"/0.9mm M6 Ecu	

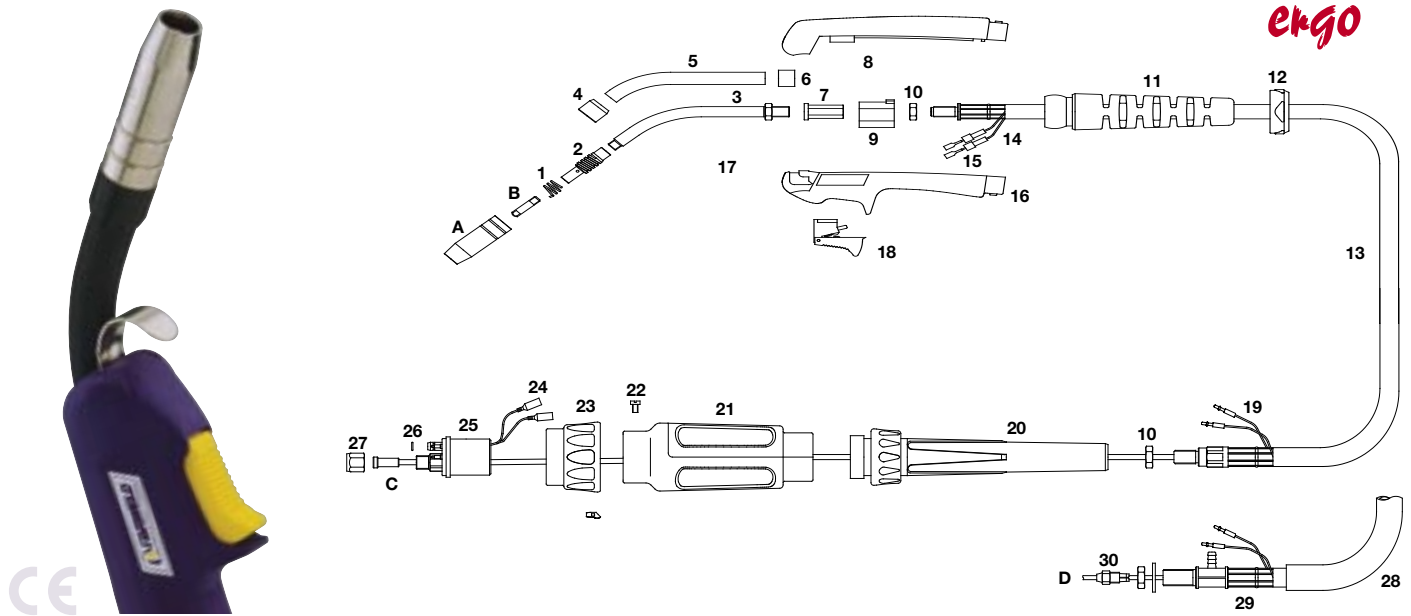
Liners		
Part Number	Description	
C B1535-30*	Steel Liner 0.23"-.035"/0.6-0.9mm X 3mt	
B1535-40*	Steel Liner 0.23"-.035"/0.6-0.9mm X 4mt	
D B1536-30	Teflon Liner 0.23"-.035"/0.6-0.9mm X 3mt	
B1536-40	Teflon Liner 0.23"-.035"/0.6-0.9mm X 4mt	

Components		
Part Number	Description	
1 B1504	Shroud Spring	
2 B1415	Swan Neck	
3 B1503	Insulator	
4 B1502	Insulation Sleeve	
5 B8003	Handle Lock Nut	
6 B8011	Cable Support	
7 B1417-30	Hyperflex Cable Assembly X 3mt	
B1417-40	Hyperflex Cable Assembly X 4mt	
8 B1521-C	Cable Terminal Cover	
9 B1521	Cable Terminal	
10 B1414	Ergo Handle Kit c/w Lock Nut	
11 B1416	Small Ergo Trigger	
12 B1522	Cable Terminal Male	
13 B1505	Lock Nut	
14 B1841	Cable Support	
15 B1518	Gun Plug Housing c/w Nut	
16 B1526	Gun Plug Screw	
17 B1519PL	Gun Plug Nut c/w Insert	
18 B1523	Gun Plug Terminal	
19 B1528	Gun Plug Body c/w Spring Pins	
20 B1524	Gun Plug 'O' Ring	
21 B1525	Liner Nut	
22 B1251	Strain Relief	
23 B1217-30TEL	Hyperflex Cable Assy X 3mt Tel	
24 B1552	Telwin Liner Collet	

\* Denotes Standard Build

# SB 150A Air Cooled MIG Welding Torch

Rating: 180A CO<sub>2</sub> 150A mixed gas, EN60974-7 @ 60% duty cycle. 0.6 to 1.0mm wires



Model			
Description	Part Number		
	10 ft	12 ft	15 ft
Welding Torch c/w Ergo Handle	B1500-30ER	B1500-40ER	B1500-50ER
Welding Torch c/w Bladeswitch Handle	B1500-30EB	B1500-40EB	B1500-50EB
Welding Torch c/w Microswitch Handle	B1500-30EM	B1500-40EM	B1500-50EM
Welding Torch c/w Terwin Termination	B1500-30TEL	B1500-40TEL	B1500-50TEL

Nozzles	
Part Number	Description
A B1529	Cylindrical Nozzle
B1530*	Conical Nozzle
B1531	Tapered Nozzle
B1532	Bottle Nozzle
B1533	Spot Welding Nozzle

Contact Tips	
Part Number	Description
B B1527-06	Contact Tip .023"/0.6mm M6 Ecu
B1527-08*	Contact Tip .030"/0.8mm M6 Ecu
B1527-09	Contact Tip .035"/0.9mm M6 Ecu
B1527-10	Contact Tip .040"/1.0mm M6 Ecu

Liners	
Part Number	Description
C B1535-30*	Steel Liner .023"- .035"/0.6-0.9mm X 3mt
B1535-40*	Steel Liner .023"- .035"/0.6-0.9mm X 4mt
B1535-50*	Steel Liner .023"- .035"/0.6-0.9mm X 5mt
D B1536-30	Teflon Liner .023"- .035"/0.6-0.9mm X 3mt
B1536-40	Teflon Liner .023"- .035"/0.6-0.9mm X 4mt
B1536-50	Teflon Liner .023"- .035"/0.6-0.9mm X 5mt

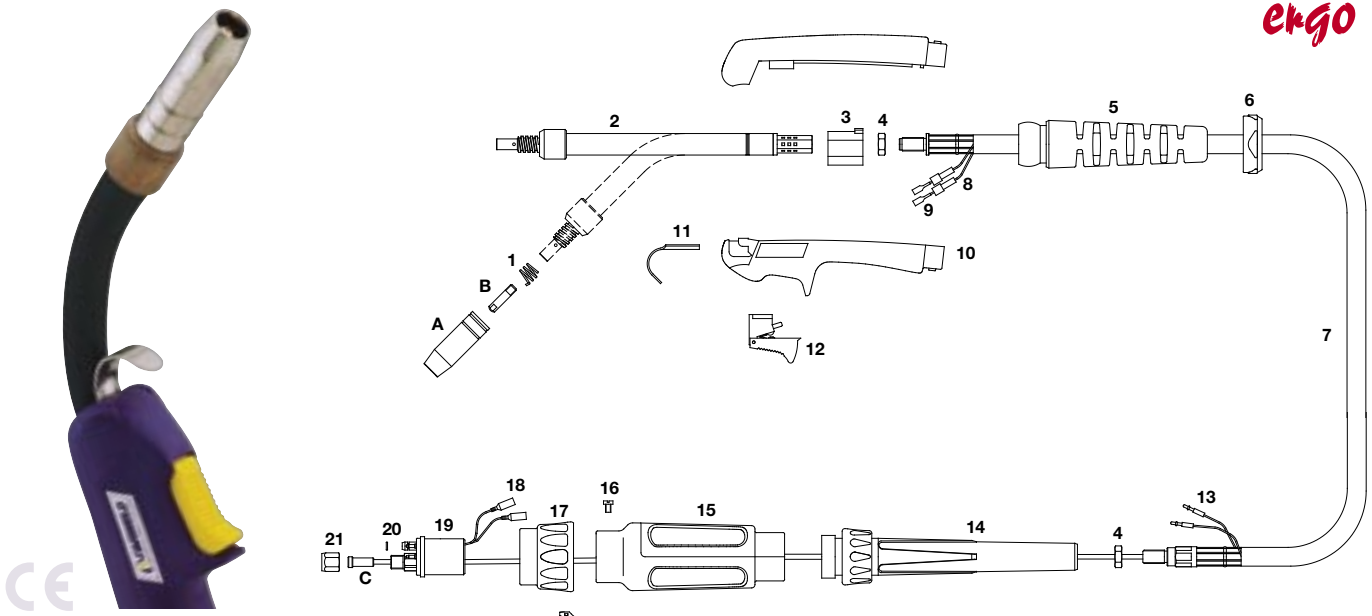
\* Denotes Standard Build

Components		
Part Number	Description	
1 B1504	Shroud Spring	
2 B1507 L/H	Tip Adaptor	
3 B1501	Swan Neck	
4 B1503	Insulator	
5 B1502	Insulation Sleeve	
6 B1506	Packing Ring	
7 B2519	Hexagonal Fitting	
8 B1515	Location Body	
9 B1515/ER	Ergo Handle Location Body	
10 B1505	Lock Nut	
11 B8015	Cable Support	
12 B8008	Handle Lock Nut	
13 B1517-30	Hyperflex Cable Assembly X 3mt	
B1517-40	Hyperflex Cable Assembly X 4mt	
B1517-50	Hyperflex Cable Assembly X 5mt	
14 B1521-C	Cable Terminal Cover	
15 B1521	Cable Terminal	
16 B2514/KJ	Ergo Handle Kit c/w Lock Nut	
17 B2517	Hanger Hook	
18 B2516	Medium / Large Ergo Trigger	
19 B1522	Cable Terminal Male	
20 B1841	Cable Support	
21 B1518	Gun Plug Housing c/w Nut	
22 B1526	Gun Plug Screw	
23 B1519PL	Gun Plug Nut c/w Insert	
24 B1523	Gun Plug Terminal	
25 B1528	Gun Plug Body c/w Spring Pins	
26 B1524	Gun Plug 'O' Ring	
27 B1525	Liner Nut	
28 B1251	Strain Relief	
29 B1217-30TEL	Hyperflex Cable Assy X 3mt Tel	
30 B1552	Telwin Liner Collet	

# SB 150A FLEX Air Cooled MIG Welding Torch



Rating: 140A CO<sub>2</sub> 120A mixed gas, EN60974-7 @ 60% duty cycle. 0.6 to 1.0mm wires



Model		
Description	Part Number	
	<b>3.0 M</b>	<b>4.0 M</b>
Welding Torch c/w Euro fitting	B1500FX-30ER B1500FX-40ER	

Nozzles		
Part Number	Description	
A B1529	Cylindrical Nozzle	
B1530*	Conical Nozzle	
B1531	Tapered Nozzle	
B1532	Bottle Nozzle	
B1533	Spot Welding Nozzle	

Contact Tips		
Part Number	Description	
B B1527-06	Contact Tip .023"/0.6mm M6 Ecu	
B1527-08*	Contact Tip .030"/0.8mm M6 Ecu	
B1527-09	Contact Tip .035"/0.9mm M6 Ecu	
B1527-10	Contact Tip .040"/1.0mm M6 Ecu	

Liners		
Part Number	Description	
C B1535-30*	Steel Liner .023"-.035"/0.6-0.9mm X 3mt	
B1535-40*	Steel Liner .023"-.035"/0.6-0.9mm X 4mt	
B1535-50*	Steel Liner .023"-.035"/0.6-0.9mm X 5mt	
B1536-30	Teflon Liner .023"-.035"/0.6-0.9mm X 3mt	
B1536-40	Teflon Liner .023"-.035"/0.6-0.9mm X 4mt	
B1536-50	Teflon Liner .023"-.035"/0.6-0.9mm X 5mt	

Components		
Part Number	Description	
1 B1504	Shroud Spring	
2 B1501FX	Swan Neck	
3 B1515/ER	Ergo Handle Location Body	
4 B1505	Lock Nut	
5 B8015	Cable Support	
6 B8008	Handle Lock Nut	
7 B1517-30	Hyperflex Cable Assembly X 3mt	
B1517-40	Hyperflex Cable Assembly X 4mt	
8 B1521-C	Cable Terminal Cover	
9 B1521	Cable Terminal	
10 B2514/KJ	Ergo Handle Kit c/w Lock Nut	
11 B2517	Hanger Hook	
12 B2516	Medium / Large Ergo Trigger	
13 B1522	Cable Terminal Male	
14 B1841	Cable Support	
15 B1518	Gun Plug Housing c/w Nut	
16 B1526	Gun Plug Screw	
17 B1519PL	Gun Plug Nut - c/w Insert	
18 B1528	Gun Plug Body c/w Spring Pins	
19 B1528	Gun Plug Body c/w Spring Pins	
20 B1524	Gun Plug 'O' Ring	
21 B1525	Liner Nut	

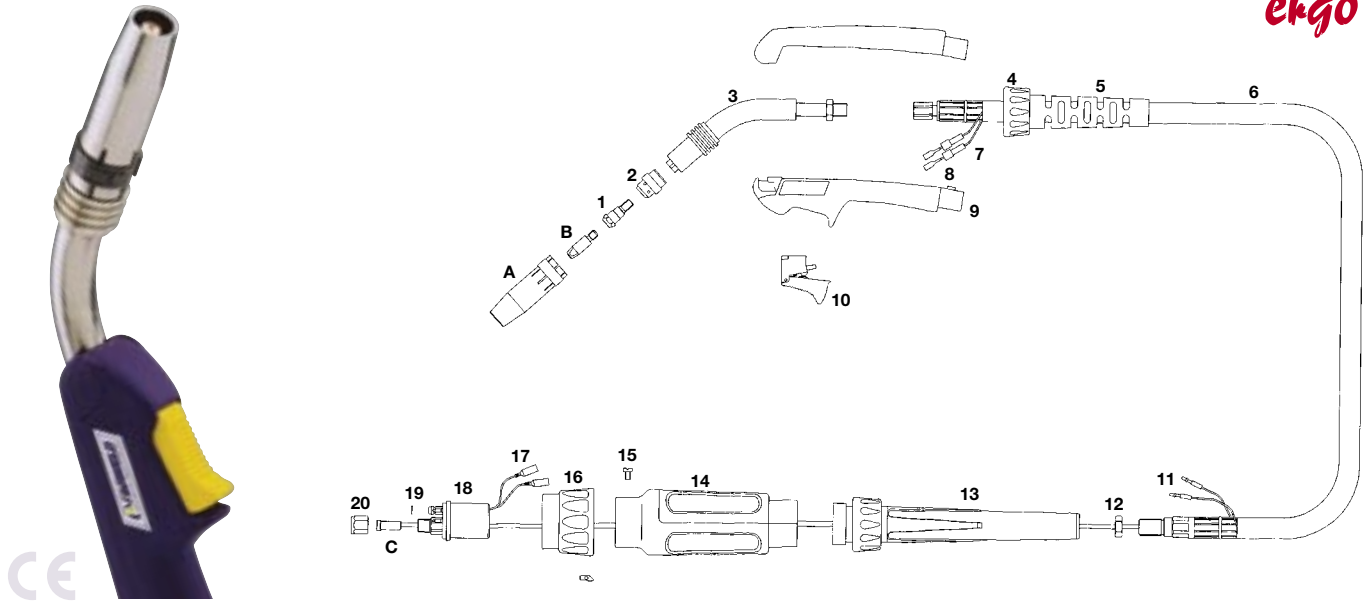
\* Denotes Standard Build



# SB 230A Air Cooled MIG Welding Torch

Rating: 200A CO<sub>2</sub> 180A mixed gas EN60974-7 @ 60% duty cycle. 0.6 to 1.0mm wires

**ergo**



Model			
Description	Part Number		
	3.0 M	4.0 M	5.0 M
Welding Torch c/w Euro fitting	B2300-30ER	B2300-40ER	B2300-50ER

Nozzles	
Part Number	Description
A B2415	Cylindrical Nozzle
B2416*	Conical Nozzle
B2417	Tapered Nozzle

Contact Tips	
Part Number	Description
B B2504-06	Contact Tip .023"/0.6mm M6 Ecu
B2504-08	Contact Tip .030"/0.8mm M6 Ecu
B2504-09	Contact Tip .035"/0.9mm M6 Ecu
B2504-10*	Contact Tip .040"/1.0mm M6 Ecu
B2505-08	Contact Tip .030"/0.8mm M6 CuCrZr
B2505-10	Contact Tip .040"/1.0mm M6 CuCrZr

Liners	
c Part Number	Description
B1535-30	Steel Liner .023"-.035"/0.6-0.9mm X 3mt
B1535-40	Steel Liner .023"-.035"/0.6-0.9mm X 4mt
B1535-50	Steel Liner .023"-.035"/0.6-0.9mm X 5mt
B2524-30*	Steel Liner .040"-.045"/1.0-1.2mm X 3mt
B2524-40*	Steel Liner .040"-.045"/1.0-1.2mm X 4mt
B2524-50*	Steel Liner .040"-.045"/1.0-1.2mm X 5mt
B1536-30	Teflon Liner .023"-.035"/0.6-0.9mm X 3mt
B1536-40	Teflon Liner .023"-.035"/0.6-0.9mm X 4mt
B1536-50	Teflon Liner .023"-.035"/0.6-0.9mm X 5mt
B2513-30	Teflon Liner .040"-.045"/1.0-1.2mm X 3mt
B2513-40	Teflon Liner .040"-.045"/1.0-1.2mm X 4mt
B2513-50	Teflon Liner .040"-.045"/1.0-1.2mm X 5mt

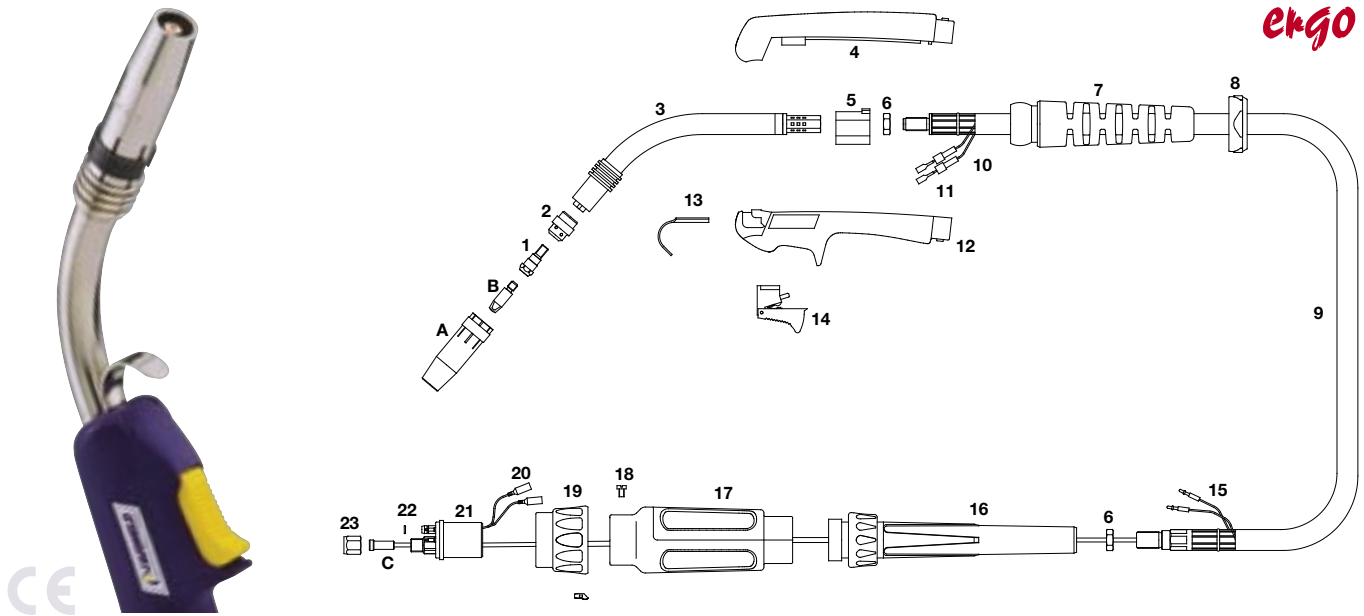
Components		
Part Number	Description	
1 B2412	Tip Adaptor	
2 B2405B	Diffuser Black	
B2405C*	Diffuser Ceramic	
B2405W	Diffuser White	
3 B2301	Swan Neck	
4 B8003	Handle Lock Nut	
5 B8011	Cable Support	
6 B2303-30	Hyperflex Cable Assembly X 3mt	
B2303-40	Hyperflex Cable Assembly X 4mt	
B2303-50	Hyperflex Cable Assembly X 5mt	
7 B1521-C	Cable Terminal Cover	
8 B1521	Cable Terminal	
9 B1414	Ergo Handle Kit c/w Lock Nut	
10 B1416	Small Ergo Trigger	
11 B1522	Cable Terminal Male	
12 B1505	Lock Nut	
13 B2841	Cable Support	
14 B1518	Gun Plug Housing c/w Nut	
15 B1526	Gun Plug Screw	
16 B1519	Gun Plug Nut c/w Insert	
17 B1523	Gun Plug Terminal	
18 B1528	Gun Plug Body c/w Spring Pins	
19 B1524	Gun Plug 'O' Ring	
20 B1525	Liner Nut	

\* Denotes Standard Build

# SB 240A Air Cooled MIG Welding Torch



Rating: 250A CO<sub>2</sub> 220A mixed gas EN60974-7 @ 60% duty cycle. 0.8 to 1.2mm wires



### Model

Description	Part Number		
	3.0 M	4.0 M	5.0 M
Welding Torch c/w Ergo handle	B2400-30ER	B2400-40ER	B2400-50ER
Welding Torch c/w Bladeswitch handle	B2400-30EB	B2400-40EB	B2400-50EB
Welding Torch c/w Microswitch handle	B2400-30EM	B2400-40EM	B2400-50EM

### Nozzles

Part Number	Description
A B2415	Cylindrical Nozzle
B2416*	Conical Nozzle
B2417	Tapered Nozzle

### Contact Tips

Part Number	Description
B B2504-08	Contact Tip .030"/0.8mm M6 Ecu
B2504-09	Contact Tip .035"/0.9mm M6 Ecu
B2504-10*	Contact Tip .040"/1.0mm M6 Ecu
B2504-12	Contact Tip .045"/1.2mm M6 Ecu
B2505-08	Contact Tip .030"/0.8mm M6 CuCrZr
B2505-09	Contact Tip .035"/0.9mm M6 CuCrZr
B2505-10	Contact Tip .040"/1.0mm M6 CuCrZr
B2505-12	Contact Tip .045"/1.2mm M6

### Liners

c Part Number	Description
B1535-30	Steel Liner .023"- .035"/0.6-0.9mm X 3mt
B1535-40	Steel Liner .023"- .035"/0.6-0.9mm X 4mt
B1535-50	Steel Liner .023"- .035"/0.6-0.9mm X 5mt
B2524-30*	Steel Liner .040"- .045"/1.0-1.2mm X 3mt
B2524-40*	Steel Liner .040"- .045"/1.0-1.2mm X 4mt
B2524-50*	Steel Liner .040"- .045"/1.0-1.2mm X 5mt
B1536-30	Teflon Liner .023"- .035"/0.6-0.9mm X 3mt
B1536-40	Teflon Liner .023"- .035"/0.6-0.9mm X 4mt
B1536-50	Teflon Liner .023"- .035"/0.6-0.9mm X 5mt
B2513-30	Teflon Liner .040"- .045"/1.0-1.2mm X 3mt
B2513-40	Teflon Liner .040"- .045"/1.0-1.2mm X 4mt
B2513-50	Teflon Liner .040"- .045"/1.0-1.2mm X 5mt

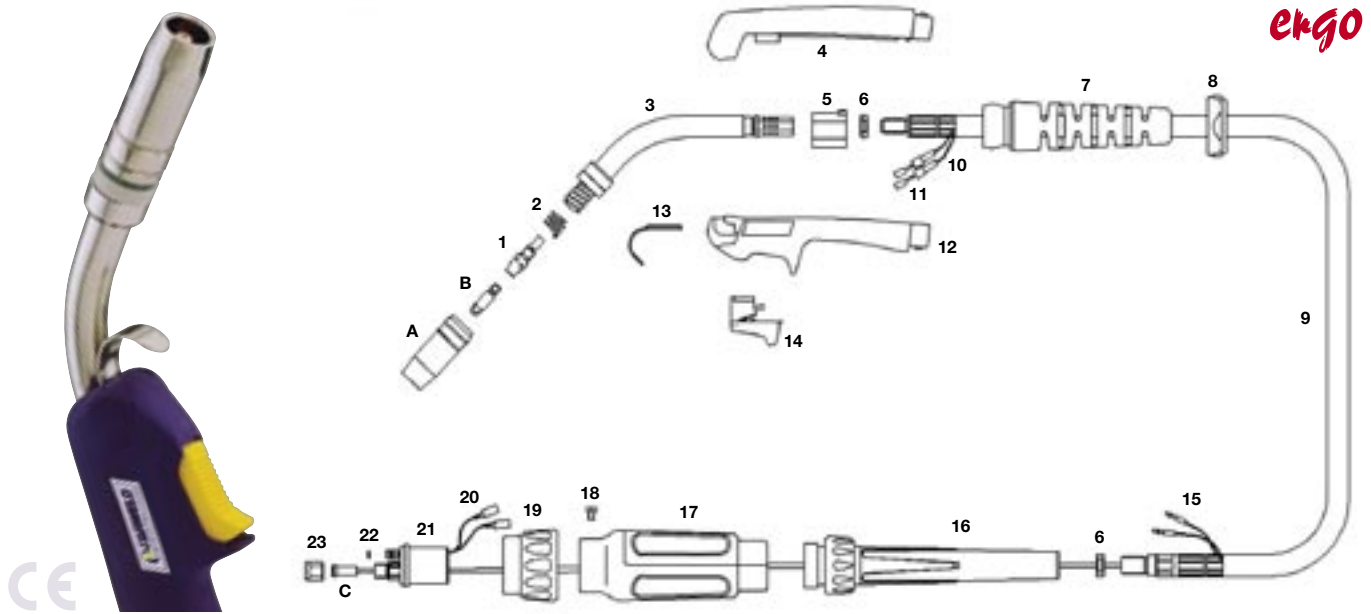
### Components

Part Number	Description
1 B2412	Tip Adaptor
2 B2405B	Diffuser Black
B2405C*	Diffuser Ceramic
B2405W	Diffuser White
3 B2401	Swan Neck
4 B1515	Location Body
5 B1515/ER	Ergo Handle Location Body
6 B1505	Lock Nut
7 B8015	Cable Support
8 B8008	Handle Lock Nut
9 B2603-30	Hyperflex Cable Assembly X 3mt
B2603-40	Hyperflex Cable Assembly X 4mt
B2603-50	Hyperflex Cable Assembly X 5mt
10 B1521-C	Cable Terminal Cover
11 B1521	Cable Terminal
12 B2514/KJ	Ergo Handle Kit c/w Lock Nut
13 B2517	Hanger Hook
14 B2516	Medium / Large Ergo Trigger
15 B1522	Cable Terminal Male
16 B2841	Cable Support
17 B1518	Gun Plug Housing c/w Nut
18 B1526	Gun Plug Screw
19 B1519	Gun Plug Nut c/w Insert
20 B1523	Gun Plug Terminal
21 B1528	Gun Plug Body c/w Spring Pins
22 B1524	Gun Plug 'O' Ring
23 B1525	Liner Nut

\* Denotes Standard Build

# SB 250A Air Cooled MIG Welding Torch

Rating: 230A CO<sub>2</sub> 200 A mixed gas, EN60974-7 @ 60% duty cycle. 0.8 to 1.2mm wires



Model			
Description	Part Number		
	3.0 M	4.0 M	5.0 M
Welding Torch c/w Ergo handle	B2500-30ER	B2500-40ER	B2500-50ER
Welding Torch c/w Bladeswitch handle	B2500-30EB	B2500-40EB	B2500-50EB
Welding Torch c/w Microswitch handle	B2500-30EM	B2500-40EM	B2500-50EM

Nozzles	
Part Number	Description
A B2507	Cylindrical Nozzle
B2508*	Conical Nozzle
B2509	Tapered Nozzle
B2510	Bottle Nozzle
B2511	Spot Welding Nozzle

Contact Tips	
Part Number	Description
B B2504-08	Contact Tip .030"/0.8mm M6 Ecu
B2504-09	Contact Tip .035"/0.9mm M6 Ecu
B2504-10*	Contact Tip .040"/1.0mm M6 Ecu
B2504-12	Contact Tip .045"/1.2mm M6 Ecu
B2505-08	Contact Tip .030"/0.8mm M6 CuCrZr
B2505-09	Contact Tip .035"/0.9mm M6 CuCrZr
B2505-10	Contact Tip .040"/1.0mm M6 CuCrZr
B2505-12	Contact Tip .045"/1.2mm M6 CuCrZr

Liners	
Part Number	Description
C B1535-30	Steel Liner .023"-.035"/0.6-0.9mm X 3mt
B1535-40	Steel Liner .023"-.035"/0.6-0.9mm X 4mt
B1535-50	Steel Liner .023"-.035"/0.6-0.9mm X 5mt
B2524-30*	Steel Liner .040"-.045"/1.0-1.2mm X 3mt
B2524-40*	Steel Liner .040"-.045"/1.0-1.2mm X 4mt
B2524-50*	Steel Liner .040"-.045"/1.0-1.2mm X 5mt
B1536-30	Teflon Liner .023"-.035"/0.6-0.9mm X 3mt
B1536-40	Teflon Liner .023"-.035"/0.6-0.9mm X 4mt
B1536-50	Teflon Liner .023"-.035"/0.6-0.9mm X 5mt
B2513-30	Teflon Liner .040"-.045"/1.0-1.2mm X 3mt
B2513-40	Teflon Liner .040"-.045"/1.0-1.2mm X 4mt
B2513-50	Teflon Liner .040"-.045"/1.0-1.2mm X 5mt

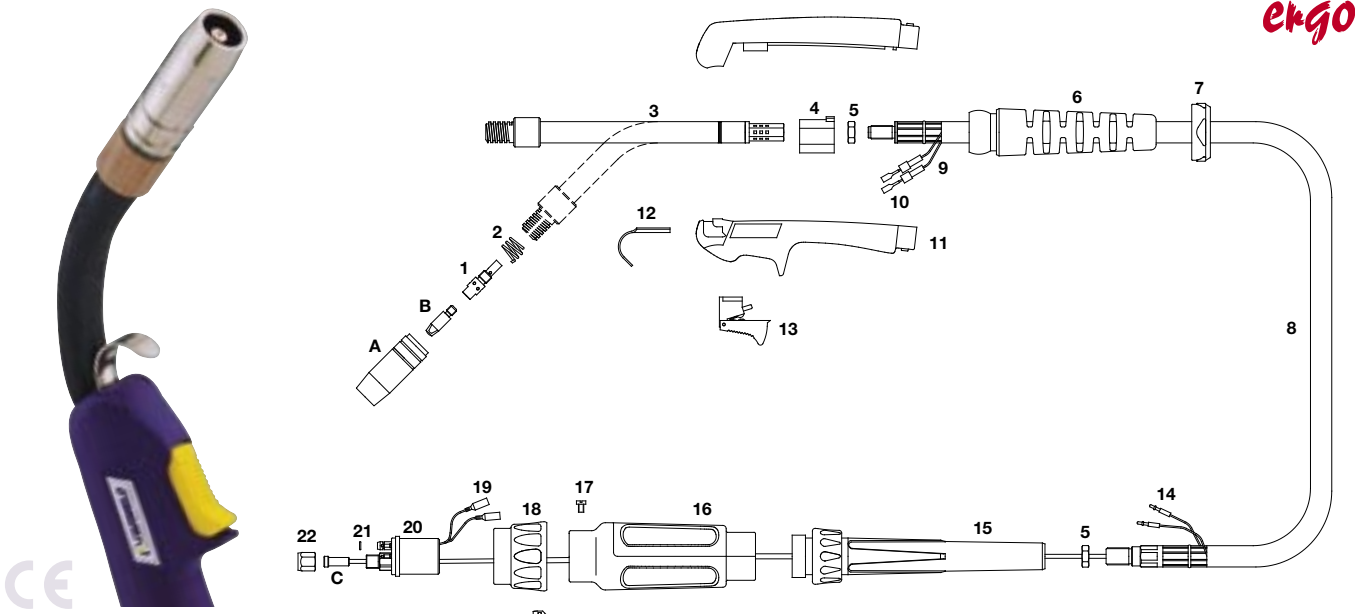
Components	
Part Number	Description
1 B2506	Tip Adaptor
2 B2502	Shroud Spring
3 B2501	Swan Neck
4 B1515	Location Body
5 B1515/ER	Ergo Handle Location Body
6 B1505	Lock Nut
7 B8015	Cable Support
8 B8008	Handle Lock Nut
9 B2503-30	Hyperflex Cable Assembly X 3mt
B2503-40	Hyperflex Cable Assembly X 4mt
B2503-50	Hyperflex Cable Assembly X 5mt
10 B1521-C	Cable Terminal Cover
11 B1521	Cable Terminal
12 B2514/KJ	Ergo Handle Kit c/w Lock Nut
13 B2517	Hanger Hook
14 B2516	Medium / Large Ergo Trigger
15 B1522	Cable Terminal Male
16 B2841	Cable Support
17 B1518	Gun Plug Housing c/w Nut
18 B1526	Gun Plug Screw
19 B1519	Gun Plug Nut c/w Insert
20 B1523	Gun Plug Terminal
21 B1528	Gun Plug Body c/w Spring Pins
22 B1524	Gun Plug 'O' Ring
23 B1525	Liner Nut

\* Denotes Standard Build

# SB 250A FLEX Air Cooled MIG Welding Torch



Rating: 230A CO<sub>2</sub> 200A mixed gas, EN60974-7 @ 60% duty cycle. 0.8 to 1.2mm wires



Model		
Description	Part Number	
	3.0 M	4.0 M
Welding Torch c/w Euro fitting	B2500FX-30ER	B2500FX-40ER

Nozzles		
Part Number	Description	
A B2507	Cylindrical Nozzle	
B2508*	Conical Nozzle	
B2509	Tapered Nozzle	
B2510	Bottle Nozzle	
B2511	Spot Welding Nozzle	

Contact Tips		
Part Number	Description	
B B2504-08	Contact Tip .023"/0.8mm M6 Ecu	
B2504-09	Contact Tip .035"/0.9mm M6 Ecu	
B2504-10*	Contact Tip .040"/1.0mm M6 Ecu	
B2504-12	Contact Tip .045"/1.2mm M6 Ecu	
B2505-08	Contact Tip .030"/0.8mm M6 CuCrZr	
B2505-09	Contact Tip .035"/0.9mm M6 CuCrZr	
B2505-10	Contact Tip .040"/1.0mm M6 CuCrZr	
B2505-12	Contact Tip .045"/1.2mm M6 CuCrZr	

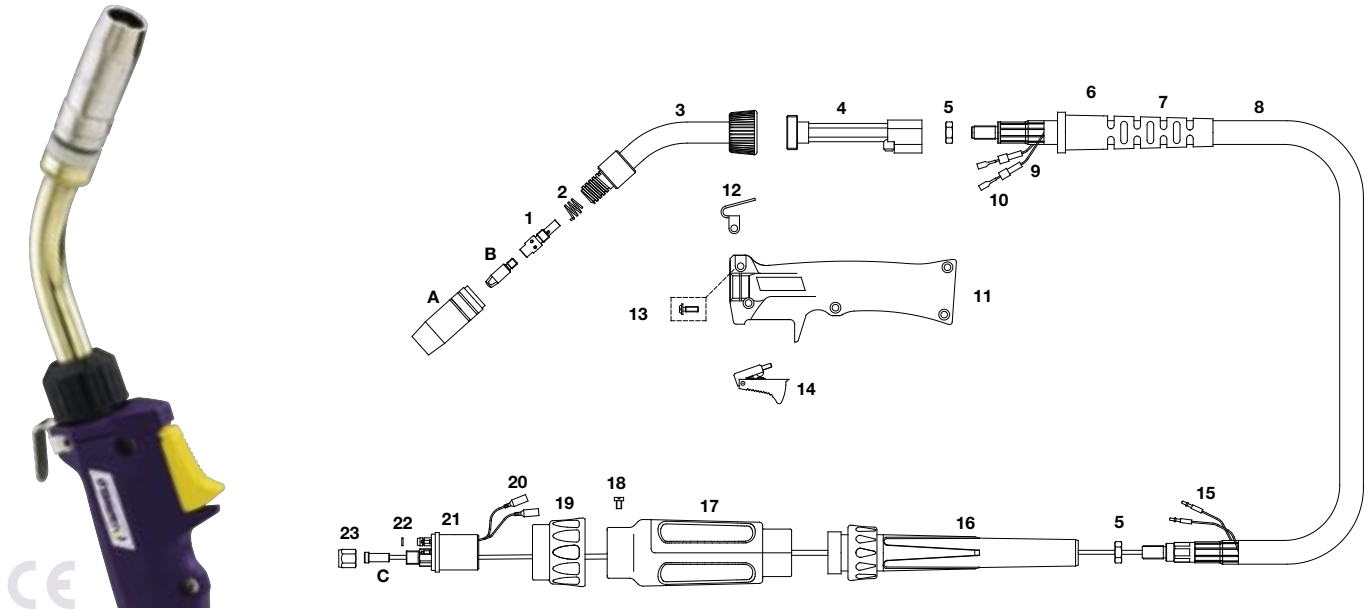
Liners		
Part Number	Description	
C B1535-30	Steel Liner .023"- .035"/0.6-0.9mm X 3mt	
B1535-40	Steel Liner .023"- .035"/0.6-0.9mm X 4mt	
B2524-30*	Steel Liner .040"- .045"/1.0-1.2mm X 3mt	
B2524-40*	Steel Liner .040"- .045"/1.0-1.2mm X 4mt	
B1536-30	Teflon Liner .023"- .035"/0.6-0.9mm X 3mt	
B1536-40	Teflon Liner .023"- .035"/0.6-0.9mm X 4mt	
B2513-30	Teflon Liner .040"- .045"/1.0-1.2mm X 3mt	
B2513-40	Teflon Liner .040"- .045"/1.0-1.2mm X 4mt	

Components		
Part Number	Description	
1 B2506	Tip Adaptor	
2 B2502	Shroud Spring	
3 B2501FX	Swan Neck	
4 B1515/ER	Handle Location Body	
5 B1505	Lock Nut	
6 B8015	Cable Support	
7 B8008	Handle Lock Nut	
8 B2503-30	Hyperflex Cable Assembly X 3mt	
B2503-40	Hyperflex Cable Assembly X 4mt	
9 B1521-C	Cable Terminal Cover	
10 B1521	Cable Terminal	
11 B2514/KJ	Ergo Handle Kit c/w Lock Nut	
12 B2517	Hanger Hook	
13 B2516	Medium / Large Ergo Trigger	
14 B1522	Cable Terminal Male	
15 B2841	Cable Support	
16 B1518	Gun Plug Housing c/w Nut	
17 B1526	Gun Plug Screw	
18 B1519	Gun Plug Nut c/w Insert	
19 B1523	Gun Plug Terminal	
20 B1528	Gun Plug Body c/w Spring Pins	
21 B1524	Gun Plug 'O' Ring	
22 B1525	Liner Nut	

\* Denotes Standard Build

# SB 250A ROTA Air Cooled MIG Welding Torch

Rating: 230A CO<sub>2</sub> 200A mixed gas, EN60974-7 @ 60% duty cycle. 0.8 to 1.2mm wires



Model		
Description	Part Number	
	3.0 M	4.0 M
Welding Torch c/w Euro fitting	B2500DR-30EB	B2500DR-40EB

Nozzles	
Part Number	Description
A B2507	Cylindrical Nozzle
B2508*	Conical Nozzle
B2509	Tapered Nozzle
B2510	Bottle Nozzle
B2511	Spot Welding Nozzle

Contact Tips	
Part Number	Description
B B2504-08	Contact Tip .030"/0.8mm M6 Ecu
B2504-09	Contact Tip .035"/0.9mm M6 Ecu
B2504-10*	Contact Tip .040"/1.0mm M6 Ecu
B2504-12	Contact Tip .045"/1.2mm M6 Ecu
B2505-08	Contact Tip .030"/0.8mm M6 CuCrZr
B2505-09	Contact Tip .035"/0.9mm M6 CuCrZr
B2505-10	Contact Tip .040"/1.0mm M6 CuCrZr
B2505-12	Contact Tip .045"/1.2mm M6 CuCrZr

Liners	
Part Number	Description
C B1535-30	Steel Liner .023"-.035"/0.6-0.9mm X 3mt
B1535-40	Steel Liner .023"-.035"/0.6-0.9mm X 4mt
B2524-30*	Steel Liner .040"-.045"/1.0-1.2mm X 3mt
B2524-40*	Steel Liner .040"-.045"/1.0-1.2mm X 4mt
B1536-30	Teflon Liner .023"-.035"/0.6-0.9mm X 3mt
B1536-40	Teflon Liner .023"-.035"/0.6-0.9mm X 4mt
B2513-30	Teflon Liner .040"-.045"/1.0-1.2mm X 3mt
B2513-40	Teflon Liner .040"-.045"/1.0-1.2mm X 4mt

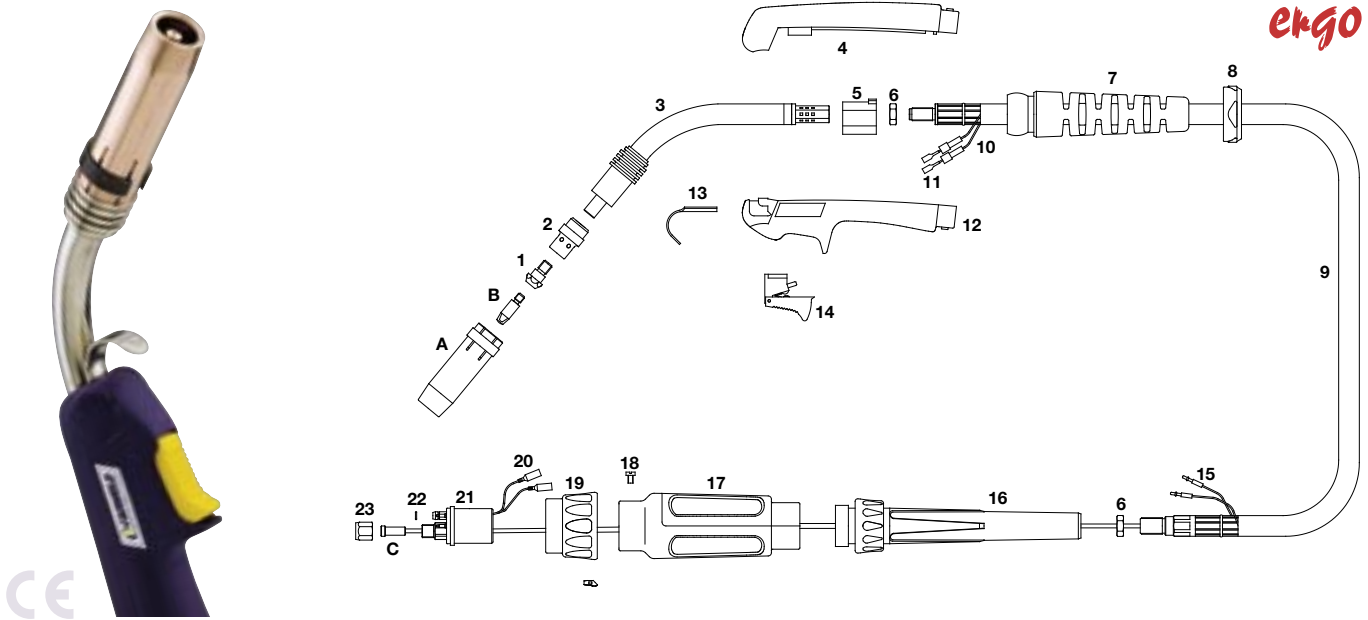
Components	
Part Number	Description
1 B2506	Tip Adaptor
2 B2502	Shroud Spring
3 B2501DR	Swan Neck
4 P9009	Handle Kit For Rotating Neck
5 B1505	Lock Nut
6 B8004	Handle Lock Nut
7 B8011	Cable Support
8 B2503-30	Hyperflex Cable Assembly X 3mt
B2503-40	Hyperflex Cable Assembly X 4mt
9 B1521-C	Cable Terminal Cover
10 B1521	Cable Terminal
11 B1509	Bladeswitch Handle Kit c/w Nut
12 B2517	Hanger Hook
13 B1513	Handle Screw Kit
14 B1408/B	Bladeswitch Trigger
15 B1522	Cable Terminal Male
16 B2841	Cable Support
17 B1518	Gun Plug Housing c/w Nut
18 B1526	Gun Plug Screw
19 B1519	Gun Plug Nut c/w Insert
20 B1523	Gun Plug Terminal
21 B1528	Gun Plug Body c/w Spring Pins
22 B1524	Gun Plug 'O' Ring
23 B1525	Liner Nut

\* Denotes Standard Build

# SB 260A Air Cooled MIG Welding Torch



Rating: 250A CO<sub>2</sub> 220A mixed gas, EN60974-7 @ 60% duty cycle. 0.8 to 1.2mm wires



### Model

Description	Part Number		
	10 ft	12 ft	15 ft
Welding Torch c/w Ergo handle	B2600-30ER	B2600-40ER	B2600-50ER
Welding Torch c/w Bladeswitch handle	B2600-30EB	B2600-40EB	B2600-50EB
Welding Torch c/w Microswitch handle	B2600-30EM	B2600-40EM	B2600-50EM

### Nozzles

Part Number	Description
A B5027	Cylindrical Nozzle
B5028*	Conical Nozzle
B5029	Tapered Nozzle

### Contact Tips

Part Number	Description
B B2504-08	Contact Tip .030"/0.8mm M6 Ecu
B2504-09	Contact Tip .035"/0.9mm M6 Ecu
B2504-10	Contact Tip .040"/1.0mm M6 Ecu
B2504-12*	Contact Tip .045"/1.2mm M6 Ecu
B2505-08	Contact Tip .030"/0.8mm M6 CuCrZr
B2505-09	Contact Tip .035"/0.9mm M6 CuCrZr
B2505-10	Contact Tip .040"/1.0mm M6 CuCrZr
B2505-12	Contact Tip .045"/1.2mm M6 CuCrZr

### Liners

Part Number	Description
C B2524-30*	Steel Liner .040"-.045"/1.0-1.2mm X 3mt
B2524-40*	Steel Liner .040"-.045"/1.0-1.2mm X 4mt
B2524-50*	Steel Liner .040"-.045"/1.0-1.2mm X 5mt
B2513-30	Teflon Liner .040"-.045"/1.0-1.2mm X 3mt
B2513-40	Teflon Liner .040"-.045"/1.0-1.2mm X 4mt
B2513-50	Teflon Liner .040"-.045"/1.0-1.2mm X 5mt

### Components

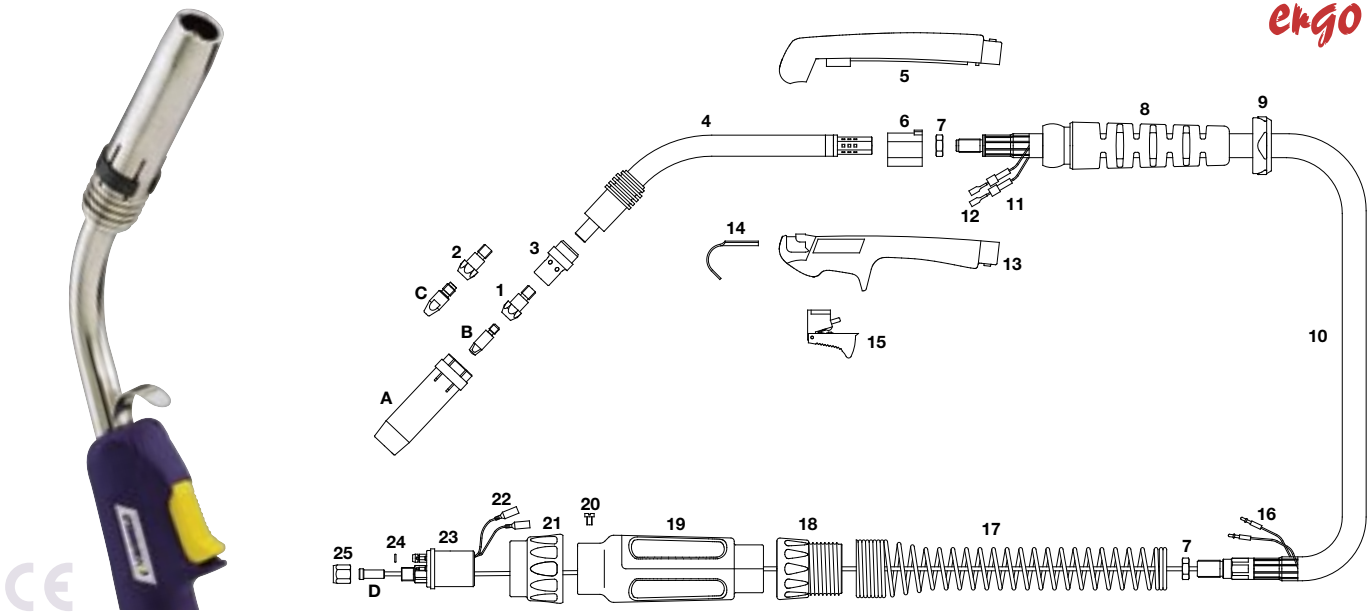
Part Number	Description
1 B2612	Tip Adaptor
2 B2605B	Diffuser Black
B2605C*	Diffuser Ceramic
B2605W	Diffuser White
3 B2601	Swan Neck
4 B1515	Location Body
5 B1515/ER	Ergo Handle Location Body
6 B1505	Lock Nut
7 B8015	Cable Support
8 B8008	Handle Lock Nut
9 B2603-30	Hyperflex Cable Assembly X 3mt
B2603-40	Hyperflex Cable Assembly X 4mt
B2603-50	Hyperflex Cable Assembly X 5mt
10 B1521-C	Cable Terminal Cover
11 B1521	Cable Terminal
12 B2514/KJ	Ergo Handle Kit c/w Lock Nut
13 B2517	Hanger Hook
14 B2516	Medium / Large Ergo Trigger
15 B1522	Cable Terminal Male
16 B2841	Cable Support
17 B1518	Gun Plug Housing c/w Nut
18 B1526	Gun Plug Screw
19 B1519	Gun Plug Nut c/w Insert
20 B1523	Gun Plug Terminal
21 B1528	Gun Plug Body c/w Spring Pins
22 B1524	Gun Plug 'O' Ring
23 B1525	Liner Nut

\* Denotes Standard Build



# SB 360A Air Cooled MIG Welding Torch

Rating: 300A CO<sub>2</sub> 270A mixed gas, EN60974-7 @ 60% duty cycle. 0.8 to 1.2mm wires



Model			
Description	Part Number		
	10 ft	12 ft	15 ft
Welding Torch c/w Ergo handle	B3600-30ER	B3600-40ER	B3600-50ER
Welding Torch c/w Bladeswitch handle	B3600-30EB	B3600-40EB	B3600-50EB
Welding Torch c/w Microswitch handle	B3600-30EM	B3600-40EM	B3600-50EM

Nozzles	
Part Number	Description
A B3615	Cylindrical Nozzle
B3616*	Conical Nozzle
B3617	Tapered Nozzle

Contact Tips	
Part Number	Description
B B2504-10	Contact Tip .040"/1.0mm M6 Ecu
B2504-12*	Contact Tip .045"/1.2mm M6 Ecu
B2505-10	Contact Tip .040"/1.0mm M6 CuCrZr
B2505-12	Contact Tip .045"/1.2mm M6 CuCrZr
C B4014-10	Contact Tip .040"/1.0mm M8 Ecu
B4014-12	Contact Tip .045"/1.2mm M8 Ecu
B4015-10	Contact Tip .040"/1.0mm M8 CuCrZr
B4015-12	Contact Tip .045"/1.2mm M8 CuCrZr

Liners	
Part Number	Description
D B2524-30*	Steel Liner .040"- .045"/1.0-1.2mm X 3mt
B2524-40*	Steel Liner .040"- .045"/1.0-1.2mm X 4mt
B2524-50*	Steel Liner .040"- .045"/1.0-1.2mm X 5mt
B2513-30	Teflon Liner .040"- .045"/1.0-1.2mm X 3mt
B2513-40	Teflon Liner .040"- .045"/1.0-1.2mm X 4mt
B2513-50	Teflon Liner .040"- .045"/1.0-1.2mm X 5mt

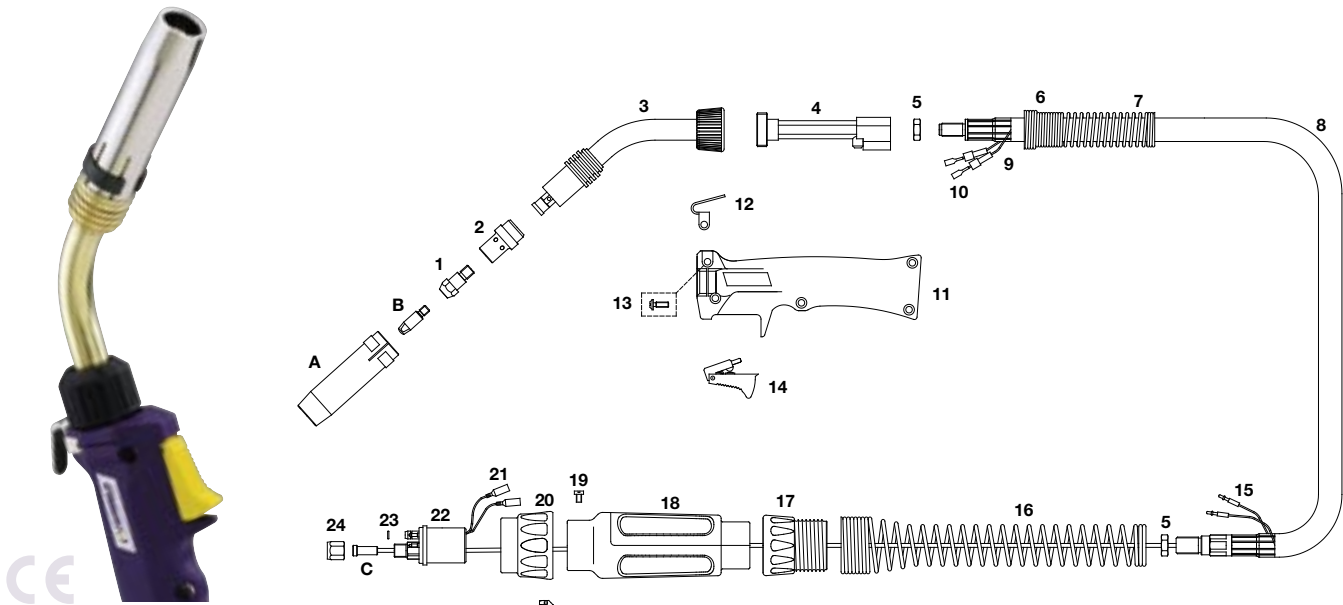
Components	
Part Number	Description
1 B3612	Tip Adaptor 28.5mm M6
2 B3613	Tip Adaptor 31.5mm M6
B3614	Tip Adaptor 28.5mm M8
3 B3605B	Diffuser Black
B3605C*	Diffuser Ceramic
B3605W	Diffuser White
4 B3603	Swan Neck
5 B1515	Location Body
6 B1515/ER	Ergo Handle Location Body
7 B1505	Lock Nut
8 B8015	Cable Support
9 B8008	Handle Lock Nut
10 B3609-30	Hyperflex Cable Assembly X 3mt
B3609-40	Hyperflex Cable Assembly X 4mt
B3609-50	Hyperflex Cable Assembly X 5mt
11 B1521-C	Cable Terminal Cover
12 B1521	Cable Terminal
13 B2514/KJ	Ergo Handle Kit c/w Lock Nut
14 B2517	Hanger Hook
15 B2516	Medium / Large Ergo Trigger
16 B1522	Cable Terminal Male
17 B8026	Spring Cable Support
18 B8028	Cable Support Nut
19 B1518	Gun Plug Housing c/w Nut
20 B1526	Gun Plug Screw
21 B1519	Gun Plug Nut c/w insert
22 B1523	Gun Plug Terminal
23 B1528	Gun Plug Body c/w Spring Pins
24 B1524	Gun Plug 'O' Ring
25 B1525	Liner Nut

\* Denotes Standard Build

# SB 360A ROTA Air Cooled MIG Welding Torch



Rating: 300A CO<sub>2</sub> 270A mixed gas, EN60974-7 @ 60% duty cycle. 0.8 to 1.2mm wires



Model		
Description	Part Number	
	3.0 M	4.0 M
Welding Torch c/w Euro fitting	B3600DR-30EB	B3600DR-40EB

Nozzles		
Part Number	Description	
A B3615	Cylindrical Nozzle	
B3616*	Conical Nozzle	
B3617	Tapered Nozzle	

Contact Tips		
Part Number	Description	
B B2504-10	Contact Tip .040"/1.0mm M6 Ecu	
B2504-12*	Contact Tip .045"/1.2mm M6 Ecu	
B2505-10	Contact Tip .040"/1.0mm M6 CuCrZr	
B2505-12	Contact Tip .045"/1.2mm M6 CuCrZr	
B4014-10	Contact Tip .040"/1.0mm M8 Ecu	
B4014-12	Contact Tip .045"/1.2mm M8 Ecu	
B4015-10	Contact Tip .040"/1.0mm M8 CuCrZr	
B4015-12	Contact Tip .045"/1.2mm M8 CuCrZr	

Liners		
Part Number	Description	
C B2524-30*	Steel Liner .040"- .045"/1.0-1.2mm X 3mt	
B2524-40*	Steel Liner .040"- .045"/1.0-1.2mm X 4mt	
B2524-50*	Steel Liner .040"- .045"/1.0-1.2mm X 5mt	
B2513-30	Teflon Liner .040"- .045"/1.0-1.2mm X 3mt	
B2513-40	Teflon Liner .040"- .045"/1.0-1.2mm X 4mt	
B2513-50	Teflon Liner .040"- .045"/1.0-1.2mm X 5mt	

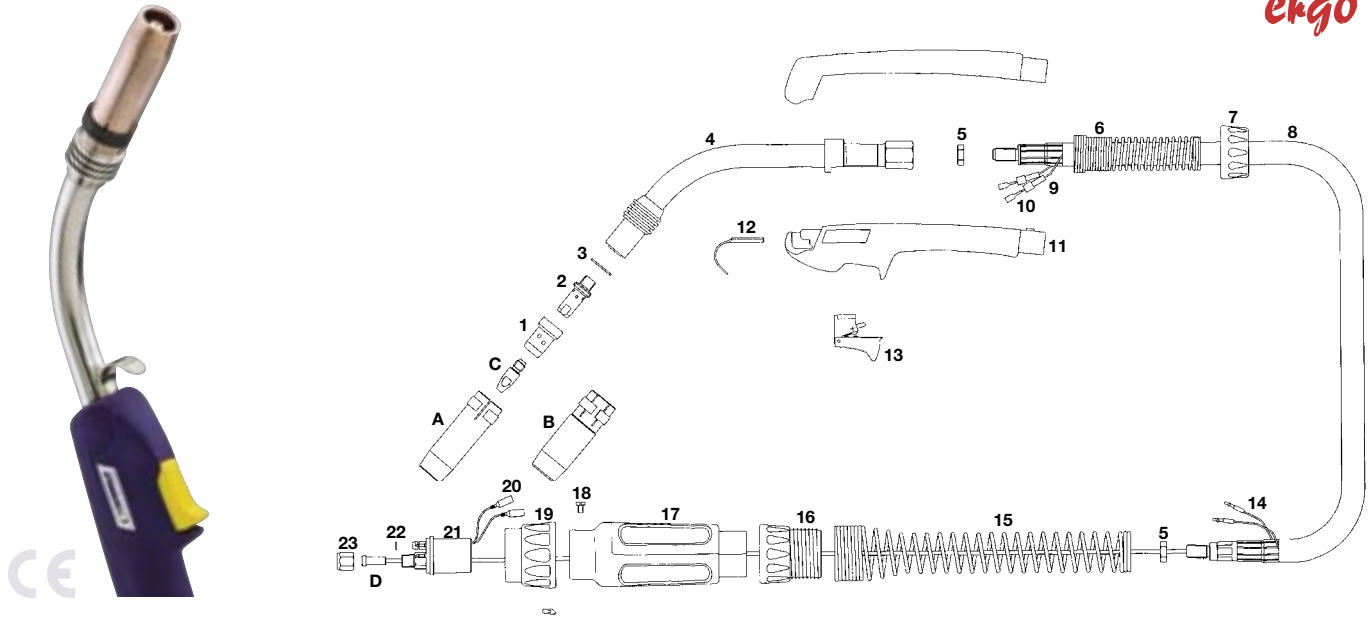
Components		
Part Number	Description	
1 B3612	Tip Adaptor 28.5mm M6	
B3613	Tip Adaptor 31.5mm M6	
B3614	Tip Adaptor 28.5mm M8	
2 B3605B	Diffuser Black	
B3605C*	Diffuser Ceramic	
B3605W	Diffuser White	
3 B3603DR	Swan Neck	
4 P9009	Handle Kit For Rotating Neck	
5 B1505	Lock Nut	
6 B8018	Handle Spring	
7 B8004	Handle Lock Nut Black Medium	
8 B3609-30	Hyperflex Cable Assembly X 3mt	
B3609-40	Hyperflex Cable Assembly X 4mt	
9 B1521-C	Cable Terminal Cover	
10 B1521	Cable Terminal	
11 B1509	Bladeswitch Handle Kit c/w Nut	
12 B2517	Hanger Hook	
13 B1513	Handle Screw Kit	
14 B1408/B	Bladeswitch Trigger	
15 B1522	Cable Terminal Male	
16 B8026	Spring Cable Support	
17 B8028	Cable Support Nut	
18 B1518	Gun Plug Housing c/w Nut	
19 B1526	Gun Plug Screw	
20 B1519	Gun Plug Nut c/w insert	
21 B1523	Gun Plug Terminal	
22 B1528	Gun Plug Body c/w Spring Pins	
23 B1524	Gun Plug 'O' Ring	
24 B1525	Liner Nut	

\* Denotes Standard Build

# SB 380A Air Cooled MIG Welding Torch

Rating: 350A CO<sub>2</sub> 320A mixed gas, EN60974-7 @ 60% duty cycle. 1.2 to 1.6mm wires

**ergo**



Model			
Description	Part Number		
	3.0 M	4.0 M	5.0 M
Welding Torch c/w Euro fitting	B3800-30ER	B3800-40ER	B3800-50ER

Nozzles	
Part Number	Description
A B5027	Cylindrical Nozzle
B5028	Conical Nozzle
B5029	Tapered Nozzle
B B5028HD*	Heavy Duty Conical Nozzle

Contact Tips	
Part Number	Description
C B4014-12*	Contact Tip .045"/1.2mm M8 Ecu
B4014-16	Contact Tip 1/16"/1.6mm M8 Ecu
B4015-12	Contact Tip .045"/1.2mm M8 CuCrZr
B4015-16	Contact Tip 1/16"/1.6mm M8 CuCrZr

Liners	
Part Number	Description
D B2524-30*	Steel Liner .040"- .045"/1.0-1.2mm X 3mt
B2524-40*	Steel Liner .040"- .045"/1.0-1.2mm X 4mt
B2524-50*	Steel Liner .040"- .045"/1.0-1.2mm X 5mt
B3631-30	Steel Liner 1/16"/1.6mm X 3mt
B3631-40	Steel Liner 1/16"/1.6mm X 4mt
B3631-50	Steel Liner 1/16"/1.6mm X 5mt
B2513-30	Teflon Liner .040"- .045"/1.0-1.2mm X 3mt
B2513-40	Teflon Liner .040"- .045"/1.0-1.2mm X 4mt
B2513-50	Teflon Liner .040"- .045"/1.0-1.2mm X 5mt
B3626-30	Teflon Liner .045"-1/16"/1.2mm-1.6mm X 3mt
B3626-40	Teflon Liner .045"-1/16"/1.2mm-1.6mm X 4mt
B3626-50	Teflon Liner .045"-1/16"/1.2mm-1.6mm X 5mt

Components		
Part Number	Description	
1 B5005B	Diffuser Black	
B5005C*	Diffuser Ceramic	
B5005W	Diffuser White	
2 B3812	Tip Adaptor	
3 B3803	Insulating Washer	
4 B3801	Swan Neck	
5 B1505	Lock Nut	
6 B8019	Handle Spring	
7 B8005	Handle Lock Nut	
8 B3609-30	Hyperflex Cable Assembly X 3mt	
B3609-40	Hyperflex Cable Assembly X 4mt	
B3609-50	Hyperflex Cable Assembly X 5mt	
9 B1521	Cable Terminal	
10 B1521-C	Cable Terminal Cover	
11 B4514	Ergo Handle c/w Lock Nut	
12 B2517	Hanger Hook	
13 B2516	Medium / Large Ergo Trigger	
14 B1522	Cable Terminal Male	
15 B8026	Spring Cable Support	
16 B8028	Cable Support Nut	
17 B1518	Gun Plug Housing c/w Nut	
18 B1526	Gun Plug Screw	
19 B1519	Gun Plug Nut c/w insert	
20 B1523	Gun Plug Terminal	
21 B1528	Gun Plug Body c/w Spring Pins	
22 B1524	Gun Plug 'O' Ring	
23 B1525	Liner Nut	

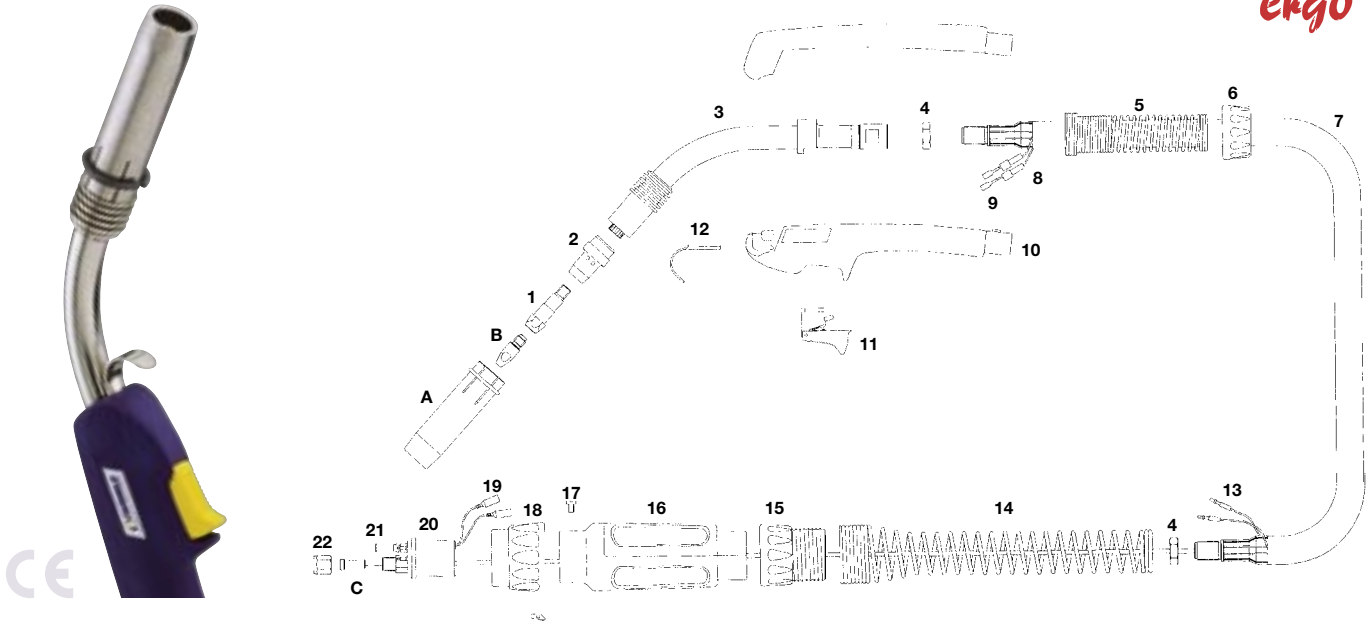
\* Denotes Standard Build

# SB 400A Air Cooled MIG Welding Torch



Rating: 350A CO<sub>2</sub> 320A mixed gas, EN60974-7 @ 60% duty cycle. 1.0 to 2.4mm wires

*ergo*



Model			
Description	Part Number		
	3.0 M	4.0 M	5.0 M
Welding Torch c/w Euro fitting	B4000-30ER	B4000-40ER	B4000-50ER

Nozzles	
Part Number	Description
A B4017*	Conical Nozzle

Contact Tips	
Part Number	Description
B B4014-10	Contact Tip .040"/1.0mm M8 Ecu
B4014-12*	Contact Tip .045"/1.2mm M8 Ecu
B4014-16	Contact Tip 1/16"/1.6mm M8 Ecu
B4014-20	Contact Tip .080"/2.0mm M8 Ecu
B4014-24	Contact Tip .090"/2.4mm M8 Ecu
B4015-10	Contact Tip .040"/1.0mm M8 CuCrZr
B4015-12	Contact Tip .045"/1.2mm M8 CuCrZr
B4015-16	Contact Tip 1/16"/1.6mm M8 CuCrZr
B4015-24	Contact Tip .090"/2.4mm M8 CuCrZr

Liners	
Part Number	Description
C B2524-30	Steel Liner .040"- .045"/1.0-1.2mm X 3mt
B2524-40	Steel Liner .040"- .045"/1.0-1.2mm X 4mt
B2524-50	Steel Liner .040"- .045"/1.0-1.2mm X 5mt
B3631-30*	Steel Liner 1/16"/1.6mm 1/16" X 3mt
B3631-40*	Steel Liner 1/16"/1.6mm X 4mt
B3631-50*	Steel Liner 1/16"/1.6mm X 5mt
B4631-30	Steel Liner .080"- .090"/2.0-2.4mm X 3mt
B4631-40	Steel Liner .080"- .090"/2.0-2.4mm X 4mt
B4631-50	Steel Liner .080"- .090"/2.0-2.4mm X 5mt
B2513-30	Teflon Liner .040"- .045"/1.0-1.2mm X 3mt
B2513-40	Teflon Liner .040"- .045"/1.0-1.2mm X 4mt
B2513-50	Teflon Liner .040"- .045"/1.0-1.2mm X 5mt

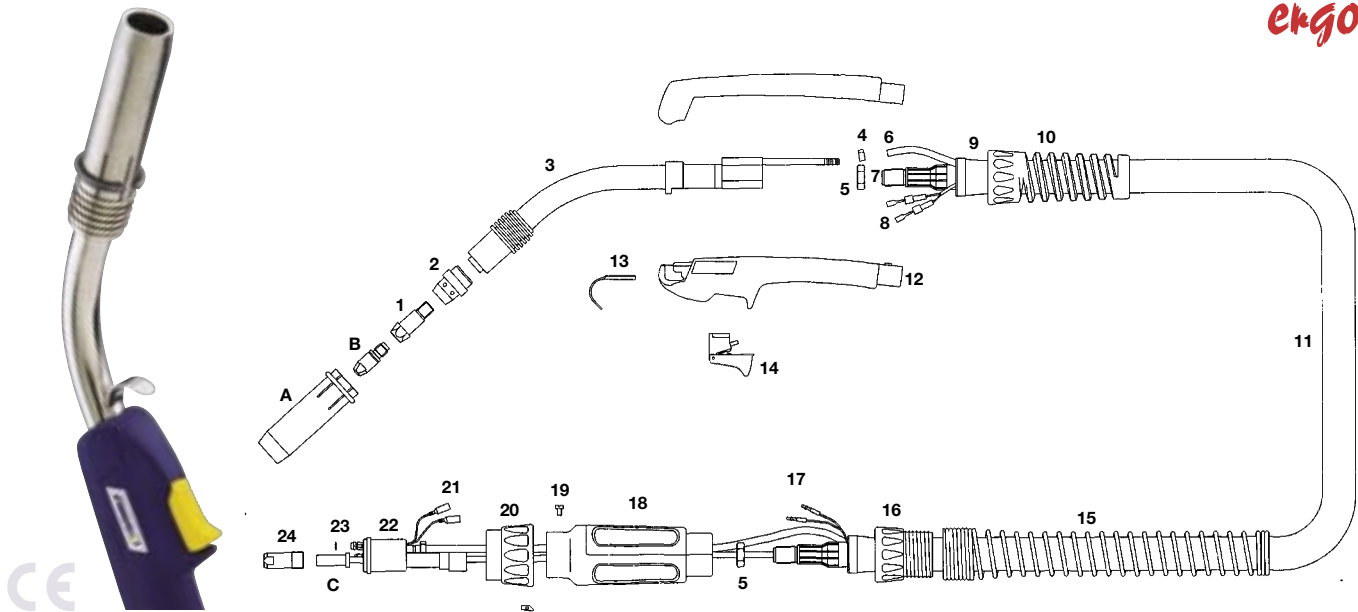
Components		
Part Number	Description	
1 B4005	Tip Adaptor	
2 B4003B	Diffuser Black	
B4003C*	Diffuser Ceramic	
3 B4002	Swan Neck	
4 B4050	Lock Nut	
5 B8018	Handle Spring	
6 B8005	Handle Lock Nut	
7 B4010-30	Hyperflex Cable Assembly X 3mt	
B4010-40	Hyperflex Cable Assembly X 4mt	
B4010-50	Hyperflex Cable Assembly X 5mt	
8 B1521-C	Cable Terminal Cover	
9 B1521	Cable Terminal	
10 B4514	Ergo Handle c/w Lock Nut	
11 B2517	Hanger Hook	
12 B4516	Ergo Trigger	
13 B1522	Cable Terminal Male	
14 B8026	Spring Cable Support	
15 B8028	Cable Support Nut	
16 B1518	Gun Plug Housing c/w Nut	
17 B1526	Gun Plug Screw	
18 B1519	Gun Plug Nut c/w insert	
19 B1523	Gun Plug Terminal	
20 B4038	Gun Plug Body c/w Spring Pins	
21 B1524	Gun Plug 'O' Ring	
22 B1525	Liner Nut	

\* Denotes Standard Build

# SB 610A Air Cooled MIG Welding Torch

Rating: 600A CO<sub>2</sub> 550A mixed gas, EN60974-7 @ 60% duty cycle. 1.0 to 1.6mm wires

**ergo**



Model		
Description	Part Number	
	<b>3.0 M</b>	<b>4.0 M</b>
Welding Torch c/w Euro fitting	B6000-30ER	B6000-40ER

Nozzles		
Part Number	Description	
A B6004*	Conical Nozzle	
B6005	Cylindrical Nozzle	

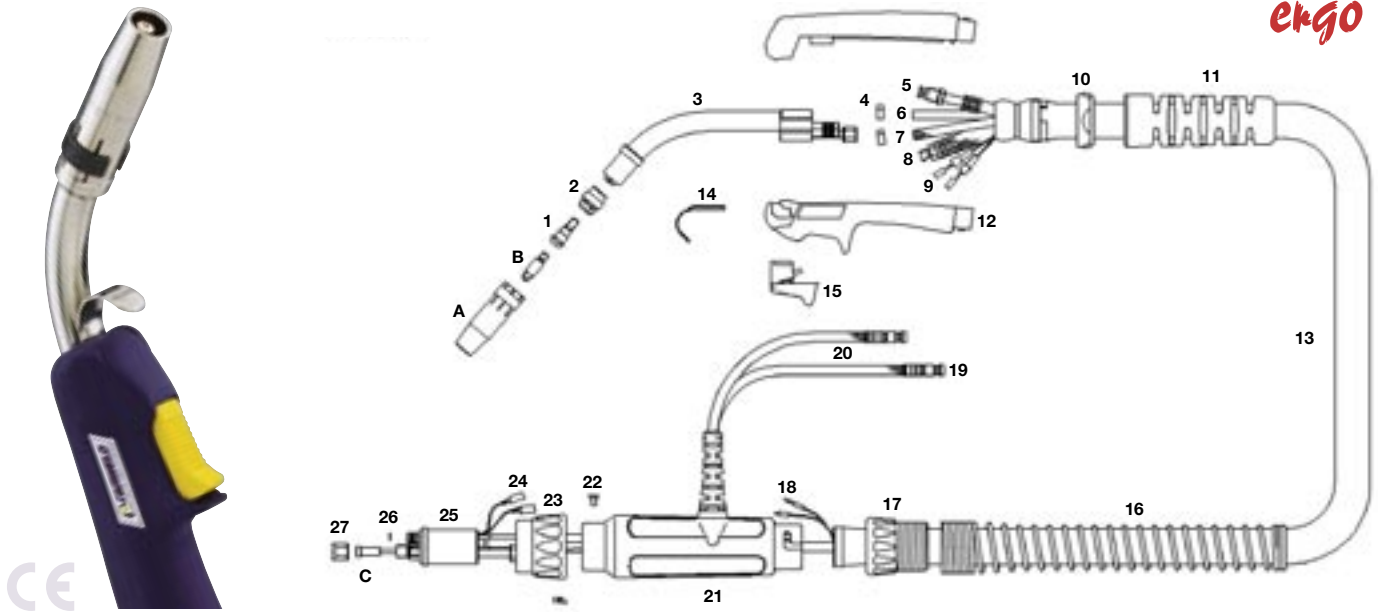
Contact Tips		
Part Number	Description	
B B6015-16*	Contact Tip 1/16"-.080"/1.6-2.0mm M10 CuCrZr	
B6015-20	Contact Tip .080"/2.0mm M10 CuCrZr	

Liners		
Part Number	Description	
C B6033-30*	Plain Liner 1/16"-.080"/1.6-2.0mm Rz-2 X 3mt	
B6033-40*	Plain Liner 1/16"-.080"/1.6-2.0mm Rz-2 X 4mt	
B4626-30	Teflon Liner .045"-1/16"/1.2-1.6mm Rz-2 X 3mt	
B4626-40	Teflon Liner .045"-1/16"/1.2-1.6mm Rz-2 X 4mt	

Components		
Part Number	Description	
1 B6003	Tip Adaptor M8	
2 B6002C*	Diffuser Ceramic	
3 B6001	Swan Neck	
4 B5024	Water Hose Clamp	
5 B4050	Lock Nut	
6 B5013-30	Gas Hose Assembly X 3mt	
B5013-40	Gas Hose Assembly X 4mt	
7 B6075-30	Power Cable Assembly X 3mt	
B6075-40	Power Cable Assembly X 4mt	
8 B5010-30	Switch Lead Assembly X 3mt	
B5010-40	Switch Lead Assembly X 4mt	
9 B8020	Canvas Cover Clamp & Retainer	
10 P9011	Strain Relief	
11 B5019-30	Canvas Cover Assembly X 3mt	
B5019-40	Canvas Cover Assembly X 4mt	
12 B4594	Ergo Handle c/w Helical Support	
13 B2517	Hanger Hook	
14 B4516	Ergo Trigger	
15 B1522	Cable Terminal Male	
15 B8027	Spring Cable Support	
16 B8028	Cable Support Nut	
17 B1522	Cable Terminal Male	
18 B1518	Gun Plug Housing c/w Nut	
19 B1526	Gun Plug Screw	
20 B1519	Gun Plug Nut c/w insert	
21 B1523	Gun Plug Terminal	
22 B6028	Gun Plug Body c/w Spring Pins	
23 B1524	Gun Plug 'O' Ring	
24 B6025	Liner Nut Rz-2	

\* Denotes Standard Build

Rating: 300A CO<sub>2</sub> 270A mixed gas, EN60974-7 @ 100% duty cycle. 0.8 to 1.2mm wires



### Model

Description	Part Number		
	3.0 M	4.0 M	5.0 M
Welding Torch c/w Ergo handle	B2400W-30ER	B2400W-40ER	B2400W-50ER
Welding Torch c/w Bladeswitch handle	B2400W-30EB	B2400W-40EB	B2400W-50EB
Welding Torch c/w Microswitch handle	B2400W-30EM	B2400W-40EM	B2400W-50EM

### Nozzles

Part Number	Description
A B2415	Cylindrical Nozzle
B2416*	Conical Nozzle
B2417	Tapered Nozzle

### Contact Tips

Part Number	Description
B B2504-08	Contact Tip .030"/0.8mm M6 Ecu
B2504-09	Contact Tip .035"/0.9mm M6 Ecu
B2504-10*	Contact Tip .040"/1.0mm M6 Ecu
B2504-12	Contact Tip .045"/1.2mm M6 Ecu
B2505-08	Contact Tip .030"/0.8mm M6 CuCrZr
B2505-09	Contact Tip .035"/0.9mm M6 CuCrZr
B2505-10	Contact Tip .040"/1.0mm M6 CuCrZr
B2505-12	Contact Tip .045"/1.2mm M6 CuCrZr

### Liners

Part Number	Description
C B5032-30*	Plain Liner .030"- .040"/0.8-1.0mm X 3mt
B5032-40*	Plain Liner .030"- .040"/0.8-1.0mm X 4mt
B5032-50*	Plain Liner .030"- .040"/0.8-1.0mm X 5mt
B5033-30	Plain Liner .040"- .045"/1.0-1.2mm X 3mt
B5033-40	Plain Liner .040"- .045"/1.0-1.2mm X 4mt
B5033-50	Plain Liner .040"- .045"/1.0-1.2mm X 5mt
B1536-30	Teflon Liner .030"- .035"/0.6-0.9mm X 3mt
B1536-40	Teflon Liner .030"- .035"/0.6-0.9mm X 4mt
B1536-50	Teflon Liner .030"- .035"/0.6-0.9mm X 5mt
B2513-30	Teflon Liner .040"- .045"/1.0-1.2mm X 3mt
B2513-40	Teflon Liner .040"- .045"/1.0-1.2mm X 4mt

\* Denotes Standard Build

### Components

Part Number	Description
1 B2412	Tip Adaptor
2 B2405B	Diffuser Black
B2405C*	Diffuser Ceramic
B2405W	Diffuser White
3 B2409	Swan Neck
4 B5024	Water Hose Clamp 9.5mm
10 B8008	Handle Lock Nut
11 B3208	Cable Support Kit
12 B2514/KJ	Ergo Handle c/w Lock Nut
14 B2517	Hanger Hook
15 B2516	Medium / Large Ergo Trigger
16 B8027	Spring Cable Support
17 B8028	Cable Support Nut
18 B1522	Cable Terminal Male
19 B5023	Water Hose Nipple
20 B5017	Water Outlet Hose O/Braid
21 B3240	Gun Plug Housing c/w In/Outlet Supports
22 B1526	Gun Plug Screw
23 B1519	Gun Plug Nut c/w insert
24 B1523	Gun Plug Terminal
25 B5098	Gun Plug Body c/w Spring Pins
26 B1524	Gun Plug 'O' Ring
27 B1525	Liner Nut

### Cable Assembly Components

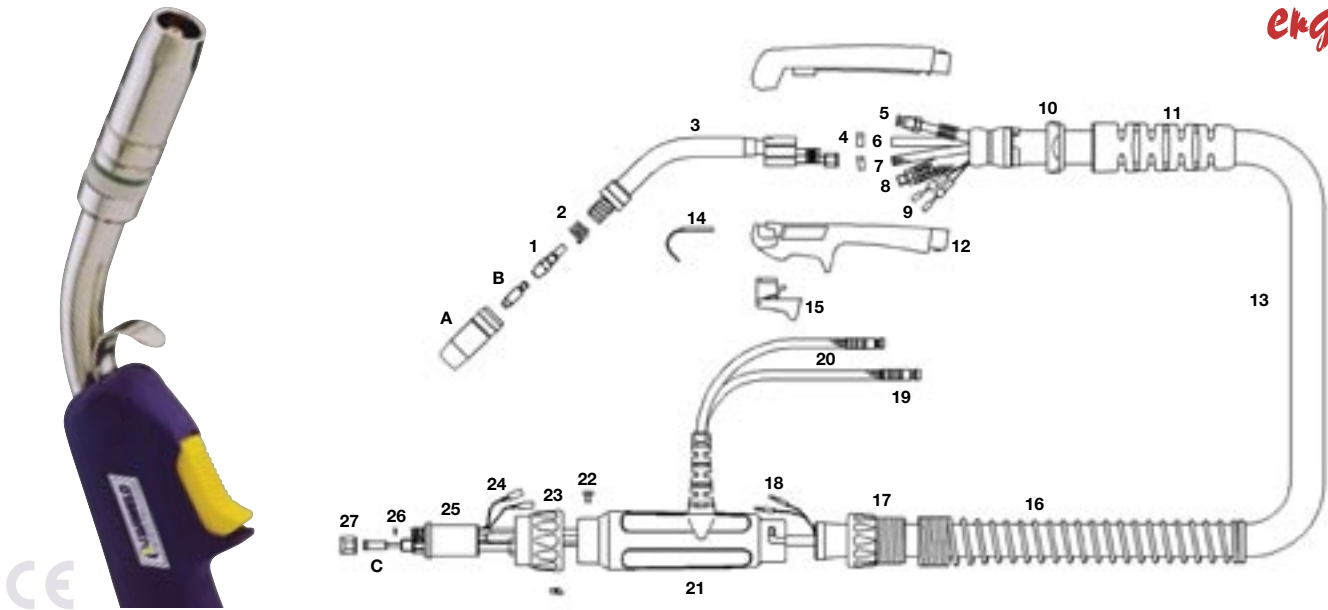
Description	Part Number		
	3M	4M	5M
5 Outer Liner Assembly	B5008-30	B5008-40	B5008-50
6 Gas Hose Assembly	B5013-30	B5013-40	B5013-50
7 Water Inlet Hose Assembly	B5012-30	B5012-40	B5012-50
8 Power Cable Assembly	B5015-30	B5015-40	B5015-50
9 Switch Lead Assembly	B5010-30	B5010-40	B5010-50
13 Canvas Cover Assembly	B5019-30	B5019-40	B5019-50



# SB 350W Water Cooled MIG Welding Torch

Rating: 320A CO<sub>2</sub> 280A mixed gas, EN60974-7 @ 100% duty cycle. 0.8 to 1.2mm wires

**ergo**



Model			
Description	Part Number		
	3.0 M	4.0 M	5.0 M
Welding Torch c/w Ergo handle	B3500-30ER	B3500-40ER	B3500-50ER
Welding Torch c/w Bladeswitch handle	B3500-30EB	B3500-40EB	B3500-50EB
Welding Torch c/w Microswitch handle	B3500-30EM	B3500-40EM	B3500-50EM

Nozzles	
Part Number	Description
A B2507	Cylindrical Nozzle
B2508*	Conical Nozzle
B2509	Tapered Nozzle

Contact Tips	
Part Number	Description
B B2504-08	Contact Tip .030"/0.8mm M6 Ecu
B2504-09	Contact Tip .035"/0.9mm M6 Ecu
B2504-10*	Contact Tip .040"/1.0mm M6 Ecu
B2505-08	Contact Tip .030"/0.8mm M6 CuCrZr
B2505-09	Contact Tip .035"/0.9mm M6 CuCrZr
B2505-10	Contact Tip .040"/1.0mm M6 CuCrZr

Liners	
Part Number	Description
C B5032-30*	Plain Liner .030"- .040"/0.8-1.0mm X 3mt
B5032-40*	Plain Liner .030"- .040"/0.8-1.0mm X 4mt
B5032-50*	Plain Liner .030"- .040"/0.8-1.0mm X 5mt
B1536-30	Teflon Liner .030"- .035"/0.6-0.9mm X 3mt
B1536-40	Teflon Liner .030"- .035"/0.6-0.9mm X 4mt
B1536-50	Teflon Liner .030"- .035"/0.6-0.9mm X 5mt
B2513-30	Teflon Liner .040"- .045"/1.0-1.2mm X 3mt
B2513-40	Teflon Liner .040"- .045"/1.0-1.2mm X 4mt

Components		
Part Number	Description	
1 B2506	Tip Adaptor	
2 B2502	Shroud Spring	
3 B3501	Swan Neck	
4 B5024	Water Hose Clamp 9.5mm	
10 B8008	Handle Lock Nut	
11 B3208	Cable Support Kit	
12 B2514/KJ	Ergo Handle c/w Lock Nut	
14 B2517	Hanger Hook	
15 B2516	Medium / Large Ergo Trigger	
16 B8027	Spring Cable Support	
17 B8028	Cable Support Nut	
18 B1522	Cable Terminal Male	
19 B5023	Water Hose Nipple	
20 B5017	Water Outlet Hose O/Braid	
21 B3240	Gun Plug Housing c/w In/Outlet Supports	
22 B1526	Gun Plug Screw	
23 B1519	Gun Plug Nut c/w insert	
24 B1523	Gun Plug Terminal	
25 B5098	Gun Plug Body c/w Spring Pins	
26 B1524	Gun Plug 'O' Ring	
27 B1525	Liner Nut	

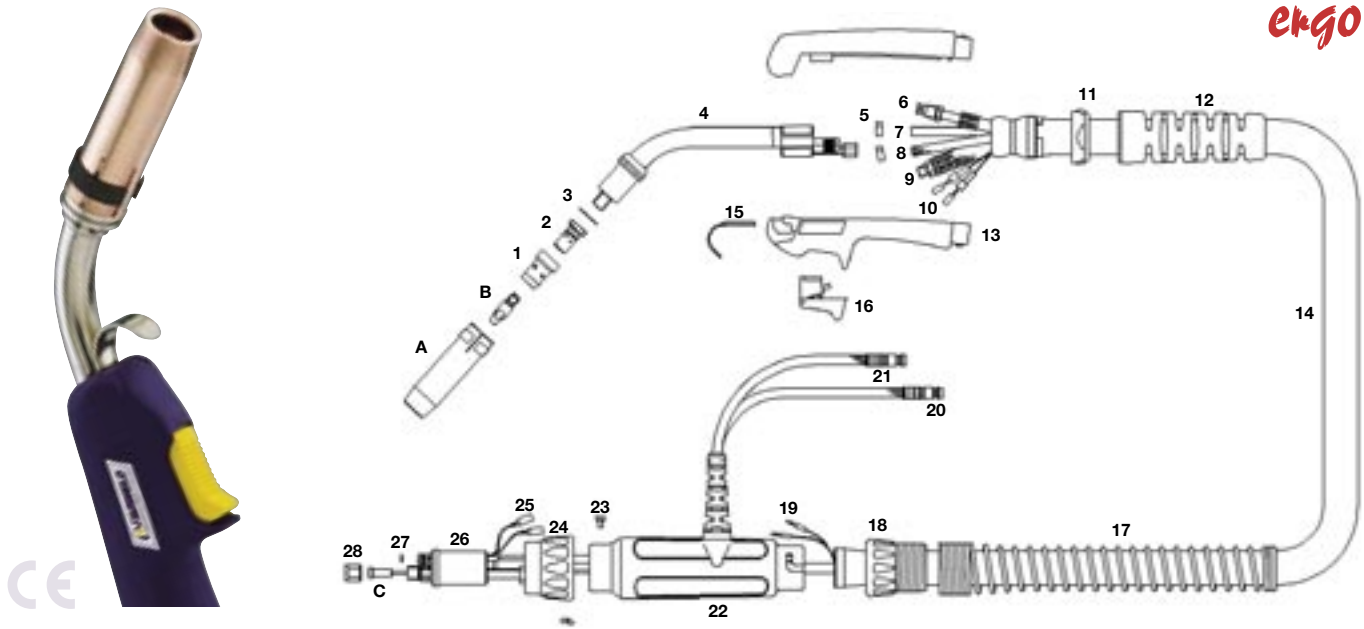
Cable Assembly Components			
Description	Part Number		
	3M	4M	5M
5 Outer Liner Assembly	B5008-30	B5008-40	B5008-50
6 Gas Hose Assembly	B5013-30	B5013-40	B5013-50
7 Water Inlet Hose Assembly	B5012-30	B5012-40	B5012-50
8 Power Cable Assembly	B5015-30	B5015-40	B5015-50
9 Switch Lead Assembly	B5010-30	B5010-40	B5010-50
13 Canvas Cover Assembly	B5019-30	B5019-40	B5019-50

\* Denotes Standard Build

# SB 401W Water Cooled MIG Welding Torch



Rating: 400A CO<sub>2</sub> 350A mixed gas, EN60974-7 @ 100% duty cycle. 0.8 to 1.2mm wires



Model			
Description	Part Number		
	3.0 M	4.0 M	5.0 M
Welding Torch c/w Ergo handle	B4001-30ER	B4001-40ER	B4001-50ER
Welding Torch c/w Bladeswitch handle	B4001-30EB	B4001-40EB	B4001-50EB
Welding Torch c/w Microswitch handle	B4001-30EM	B4001-40EM	B4001-50EM

Nozzles	
Part Number	Description
A B5027	Cylindrical Nozzle
B5028*	Conical Nozzle
B5029	Tapered Nozzle

Contact Tips	
Part Number	Description
B B4014-10	Contact Tip .040"/1.0mm M8 Ecu
B4014-12*	Contact Tip .045"/1.2mm M8 Ecu
B4015-10	Contact Tip .040"/1.0mm M8 CuCrZr
B4015-12	Contact Tip .045"/1.2mm M8 CuCrZr

Liners	
Part Number	Description
C B5033-30*	Plain Liner .040"- .045"/1.0-1.2mm X 3mt
B5033-40*	Plain Liner .040"- .045"/1.0-1.2mm X 4mt
B5033-50*	Plain Liner .040"- .045"/1.0-1.2mm X 5mt
B2513-30	Teflon Liner .040"- .045"/1.0-1.2mm X 3mt
B2513-40	Teflon Liner .040"- .045"/1.0-1.2mm X 4mt
B2513-50	Teflon Liner .040"- .045"/1.0-1.2mm X 5mt

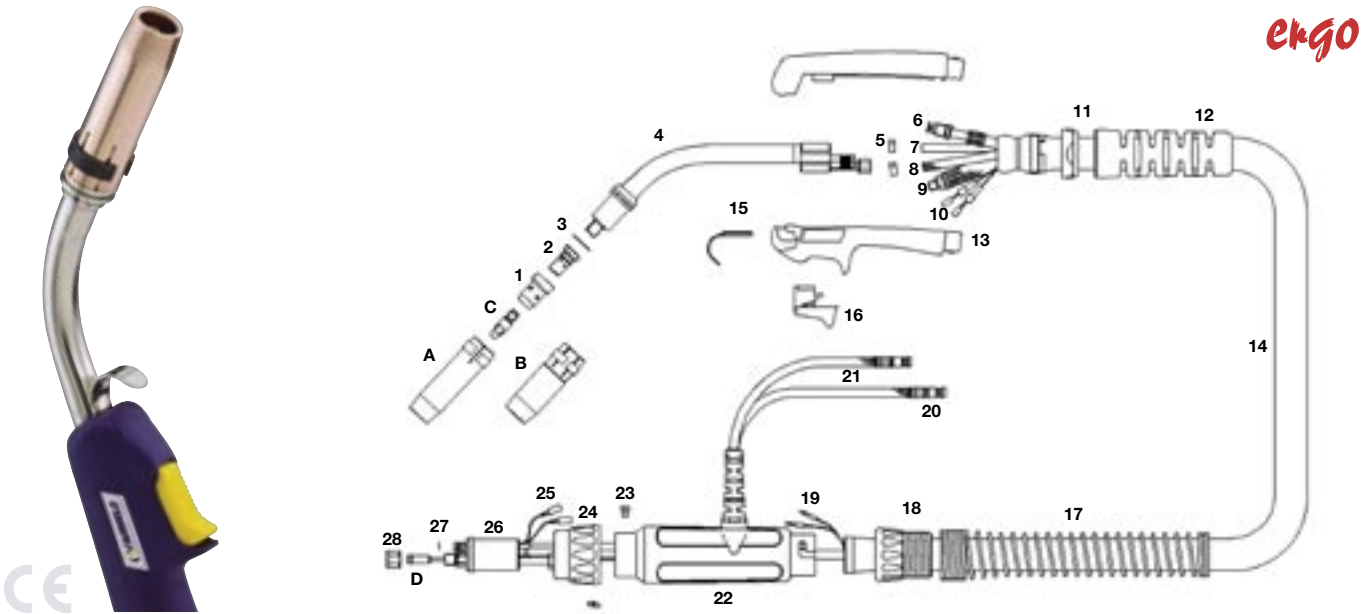
Components		
Part Number	Description	
1	B5005B	Diffuser Black
	B5005C*	Diffuser Ceramic
	B5005W	Diffuser White
2	B5001	Tip Adaptor 25.0mm M8
3	B5003	Insulating Washer
4	B4011	Swan Neck
5	B5024	Water Hose Clamp 9.5mm
11	B8008	Handle Lock Nut
12	B3208	Cable Support Kit
13	B2514/KJ	Ergo Handle c/w Lock Nut
15	B2517	Hanger Hook
16	B2516	Medium / Large Ergo Trigger
17	B8027	Spring Cable Support
18	B8028	Cable Support Nut
19	B1522	Cable Terminal Male
20	B5023	Water Hose Nipple
21	B5017	Water Outlet Hose O/Braid
22	B3240	Gun Plug Housing c/w In/Outlet Supports
23	B1526	Gun Plug Screw
24	B1519	Gun Plug Nut c/w Insert
25	B1523	Gun Plug Terminal
26	B1524	Gun Plug 'O' Ring
27	B5098	Gun Plug Body c/w Spring Pins
28	B1525	Liner Nut

Cable Assembly Components				
Description	Part Number			
	3M	4M	5M	
6	Outer Liner Assembly	B5008-30	B5008-40	B5008-50
7	Gas Hose Assembly	B5013-30	B5013-40	B5013-50
8	Water Inlet Hose Assembly	B5012-30	B5012-40	B5012-50
9	Power Cable Assembly	B5015-30	B5015-40	B5015-50
10	Switch Lead Assembly	B5010-30	B5010-40	B5010-50
14	Canvas Cover Assembly	B5019-30	B5019-40	B5019-50

\* Denotes Standard Build

# SB 501W Water Cooled MIG Welding Torch

Rating: 520A CO<sub>2</sub> 430A mixed gas, EN60974-7 @ 100% duty cycle. 1.0 to 1.6mm wires



Model			
Description	Part Number		
	10 ft	12 ft	15 ft
Welding Torch c/w Ergo handle	B5000-30ER	B5000-40ER	B5000-50ER
Welding Torch c/w Bladeswitch handle	B5000-30EB	B5000-40EB	B5000-50EB
Welding Torch c/w Microswitch handle	B5000-30EM	B5000-40EM	B5000-50EM

Nozzles	
Part Number	Description
A B5027	Cylindrical Nozzle
B5028*	Conical Nozzle
B5029	Tapered Nozzle
B B5028HD	Heavy Duty Conical Nozzle

Contact Tips	
Part Number	Description
C B4014-10	Contact Tip .040"/1.0mm M8 Ecu
B4014-12*	Contact Tip .045"/1.2mm M8 Ecu
B4014-16	Contact Tip 1/16"/1.6mm M8 Ecu
B4015-10	Contact Tip .040"/1.0mm M8 CuCrZr
B4015-12	Contact Tip .045"/1.2mm M8 CuCrZr
B4015-16	Contact Tip 1/16"/1.6mm M8 CuCrZr

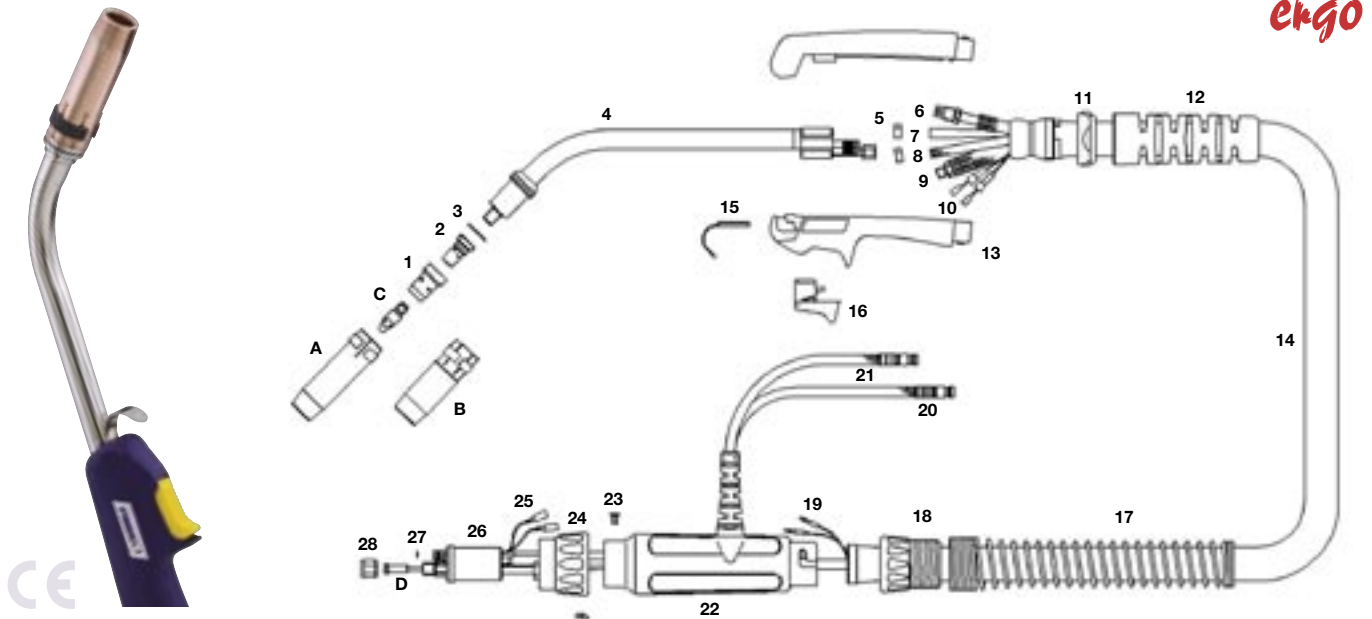
Liners	
Part Number	Description
D B5033-30	Plain Liner .040"- .045"/1.0-1.2mm X 3mt
B5033-40	Plain Liner .040"- .045"/1.0-1.2mm X 4mt
B5033-50	Plain Liner .040"- .045"/1.0-1.2mm X 5mt
B5034-30*	Plain Liner .045"-1/16"/1.2-1.6mm X 3mt
B5034-40*	Plain Liner .045"-1/16"/1.2-1.6mm X 4mt
B5034-50*	Plain Liner .045"-1/16"/1.2-1.6mm X 5mt
B2513-30	Teflon Liner .040"- .045"/1.0-1.2mm X 3mt
B2513-40	Teflon Liner .040"- .045"/1.0-1.2mm X 4mt
B2513-50	Teflon Liner .040"- .045"/1.0-1.2mm X 5mt
B3626-30	Teflon Liner .045"-1/16"/1.2-1.6mm X 3mt
B3626-40	Teflon Liner .045"-1/16"/1.2-1.6mm X 4mt
B3626-50	Teflon Liner .045"-1/16"/1.2-1.6mm X 5mt

Components		
Part Number	Description	
1 B5005B	Diffuser Black	
B5005C*	Diffuser Ceramic	
B5005W	Diffuser White	
2 B5001	Tip Adaptor 25.0mm M8	
3 B5003	Insulating Washer	
4 B5002	Swan Neck	
5 B5024	Water Hose Clamp 9.5mm	
11 B8008	Handle Lock Nut	
12 B3208	Cable Support Kit	
13 B2514/KJ	Ergo Handle c/w Lock Nut	
15 B2517	Hanger Hook	
16 B2516	Medium / Large Ergo Trigger	
17 B8027	Spring Cable Support	
18 B8028	Cable Support Nut	
19 B1522	Cable Terminal Male	
20 B5023	Water Hose Nipple	
21 B5017	Water Outlet Hose O/Braid	
22 B3240	Gun Plug Housing c/w In/Outlet Supports	
23 B1526	Gun Plug Screw	
24 B1519	Gun Plug Nut c/w Insert	
25 B1523	Gun Plug Terminal	
26 B5098	Gun Plug Body c/w Spring Pins	
27 B1524	Gun Plug 'O' Ring	
28 B1525	Liner Nut	

Cable Assembly Components				
Description	Part Number			
	3M	4M	5M	
6 Outer Liner Assembly	B5008-30	B5008-40	B5008-50	
7 Gas Hose Assembly	B5013-30	B5013-40	B5013-50	
8 Water Inlet Hose Assembly	B5012-30	B5012-40	B5012-50	
9 Power Cable Assembly	B5015-30	B5015-40	B5015-50	
10 Switch Lead Assembly	B5010-30	B5010-40	B5010-50	
14 Canvas Cover Assembly	B5019-30	B5019-40	B5019-50	

\* Denotes Standard Build

Rating: 520A CO<sub>2</sub> 430A mixed gas, EN60974-7 @ 100% duty cycle. 1.0 to 1.6mm wires



Model			
Description	Part Number		
	3.0 M	4.0 M	5.0 M
Welding Torch c/w Euro fitting	B500L-30ER	B500L-40ER	B500L-50ER

Nozzles	
Part Number	Description
A B5027	Cylindrical Nozzle
B5028*	Conical Nozzle
B5029	Tapered Nozzle
B B5028HD	Heavy Duty Conical Nozzle

Contact Tips	
Part Number	Description
C B4014-10	Contact Tip .040"/1.0mm M8 Ecu
B4014-12*	Contact Tip .045"/1.2mm M8 Ecu
B4014-16	Contact Tip 1/16"/1.6mm M8 Ecu
B4015-10	Contact Tip .040"/1.0mm M8 CuCrZr
B4015-12	Contact Tip .045"/1.2mm M8 CuCrZr
B4015-16	Contact Tip 1/16"/1.6mm M8 CuCrZr

Liners	
Part Number	Description
D B5033-30	Plain Liner .040"-.045"/1.0-1.2mm X 3mt
B5033-40	Plain Liner .040"-.045"/1.0-1.2mm X 4mt
B5033-50	Plain Liner .040"-.045"/1.0-1.2mm X 5mt
B5034-30*	Plain Liner .045"-1/16"/1.2-1.6mm X 3mt
B5034-40*	Plain Liner .045"-1/16"/1.2-1.6mm X 4mt
B5034-50*	Plain Liner .045"-1/16"/1.2-1.6mm X 5mt
B2513-30	Teflon Liner .040"-.045"/1.0-1.2mm X 3mt
B2513-40	Teflon Liner .040"-.045"/1.0-1.2mm X 4mt
B2513-50	Teflon Liner .040"-.045"/1.0-1.2mm X 5mt
B3626-30	Teflon Liner .045"-1/16"/1.0-1.2 X 3mt
B3626-40	Teflon Liner .045"-1/16"/1.0-1.2 X 3mtX 4mt
B3626-50	Teflon Liner .045"-1/16"/1.0-1.2 X 3mtX 5mt

Components		
Part Number	Description	
1 B5005B	Diffuser Black	
B5005C*	Diffuser Ceramic	
B5005W	Diffuser White	
2 B5001	Tip Adaptor 25.0mm M8	
3 B5003	Insulating Washer	
4 B5002L	Extended Length Swan Neck	
5 B5024	Water Hose Clamp 9.5mm	
11 B8008	Handle Lock Nut	
12 B3208	Cable Support Kit	
13 B2514/KJ	Ergo Handle c/w Lock Nut	
15 B2517	Hanger Hook	
16 B2516	Medium / Large Ergo Trigger	
17 B8027	Spring Cable Support	
18 B8028	Cable Support Nut	
19 B1522	Cable Terminal Male	
20 B5023	Water Hose Nipple	
21 B5017	Water Outlet Hose O/Braid	
22 B3240	Gun Plug Housing c/w In/Outlet Supports	
23 B1526	Gun Plug Screw	
24 B1519	Gun Plug Nut c/w Insert	
25 B1523	Gun Plug Terminal	
26 B5098	Gun Plug Body c/w Spring Pins	
27 B1524	Gun Plug 'O' Ring	
28 B1525	Liner Nut	

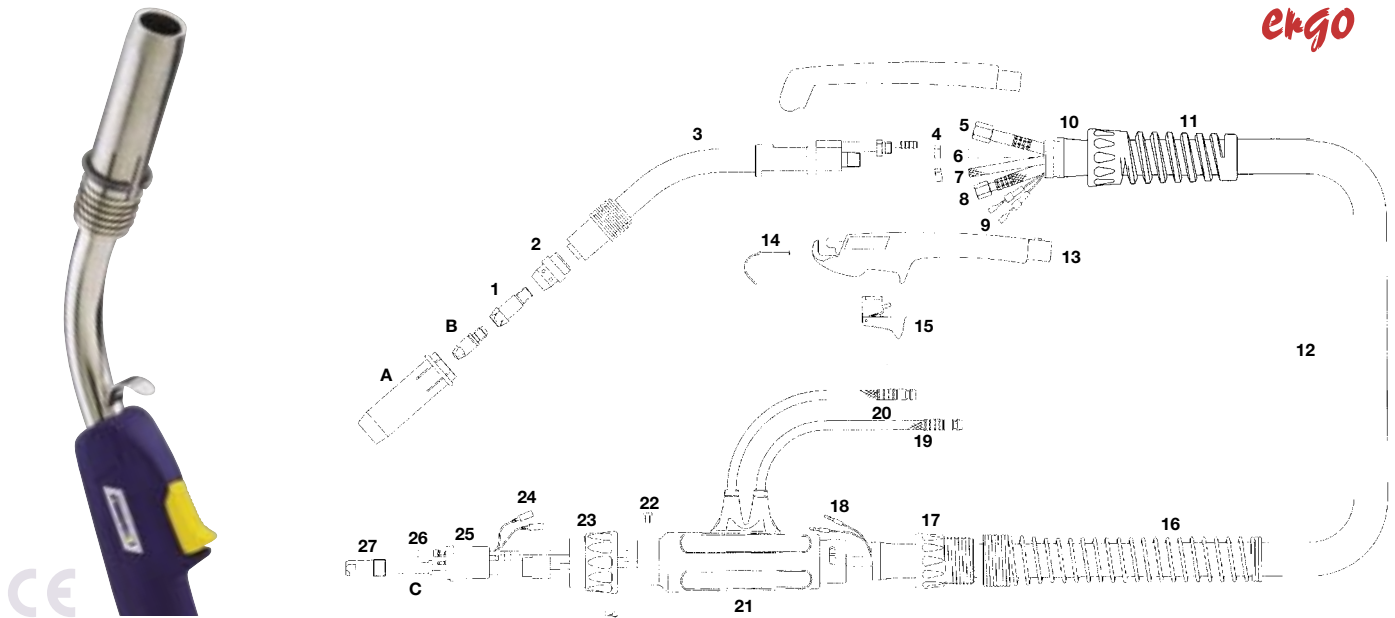
Cable Assembly Components			
Description	Part Number		
	3M	4M	5M
6 Outer Liner Assembly	B5008-30	B5008-40	B5008-50
7 Gas Hose Assembly	B5013-30	B5013-40	B5013-50
8 Water Inlet Hose Assembly	B5012-30	B5012-40	B5012-50
9 Power Cable Assembly	B5015-30	B5015-40	B5015-50
10 Switch Lead Assembly	B5010-30	B5010-40	B5010-50
14 Canvas Cover Assembly	B5019-30	B5019-40	B5019-50

\* Denotes Standard Build

# SB 610W Water Cooled MIG Welding Torch

Rating: 650A CO<sub>2</sub> 600A mixed gas, EN60974-7 @ 100% duty cycle. 1.6to 3.2mm wires

**ergo**



Model		
Description	Part Number	
	<b>3.0 M</b>	<b>4.0M</b>
Welding Torch c/w Euro fitting	B6100-30ER	B6100-40ER

Nozzles	
Part Number	Description
A B6004*	Conical Nozzle
B6005	Cylindrical Nozzle

Contact Tips	
Part Number	Description
B B6015-16*	Contact Tip 1/16"-.080"/1.6mm M10 CuCrZr
B6015-20	Contact Tip .080"/2.0mm M10 CuCrZr
B6015-24	Contact Tip .090"/2.4mm M10 CuCrZr
B6015-32	Contact Tip 1/8"/3.2mm M10 CuCrZr

Liners	
Part Number	Description
C B6033-30*	Plain Liner 1/16"-.080"/1.6-2.0mm Rz-2 X 3mt
B6033-40*	Plain Liner 1/16"-.080"/1.6-2.0mm Rz-2 X 4mt
B6034-30	Plain Liner .090"-2.4mm Rz-2 X 3mt
B6034-40	Plain Liner .090"-2.4mm Rz-2 X 4mt
B6035-30	Plain Liner .11-1/8"/2.8-3.2mm Rz-2 X 3mt
B6035-40	Plain Liner .11-1/8"/2.8-3.2mm Rz-2 X 4mt

Components		
Part Number	Description	
1 B6003	Tip Adaptor M8	
2 B6002C	Diffuser Ceramic	
3 B6101	Swan Neck	
4 B5024	Water Hose Clamp 9.5mm	
10 B8020	Canvas Cover Clamp & Retainer	
11 B8007	Helical Cable Support	
13 B4594	Ergo Handle c/w Helical Supp	
14 B2517	Hanger Hook	
15 B4516	Ergo Trigger	
16 B8027	Spring Cable Support	
17 B8028	Cable Support Nut	
18 B1522	Cable Terminal Male	
19 B5023	Water Hose Nipple	
20 B5017	Water Outlet Hose O/Braid	
21 B5022	Gun Plug Housing	
22 B1526	Gun Plug Screw	
23 B1519	Gun Plug Nut c/w Insert	
24 B1523	Gun Plug Terminal	
25 B6029	Gun Plug Body c/w Spring Pins	
26 B1524	Gun Plug 'O' Ring	
27 B6025	Liner Nut Rz-2	

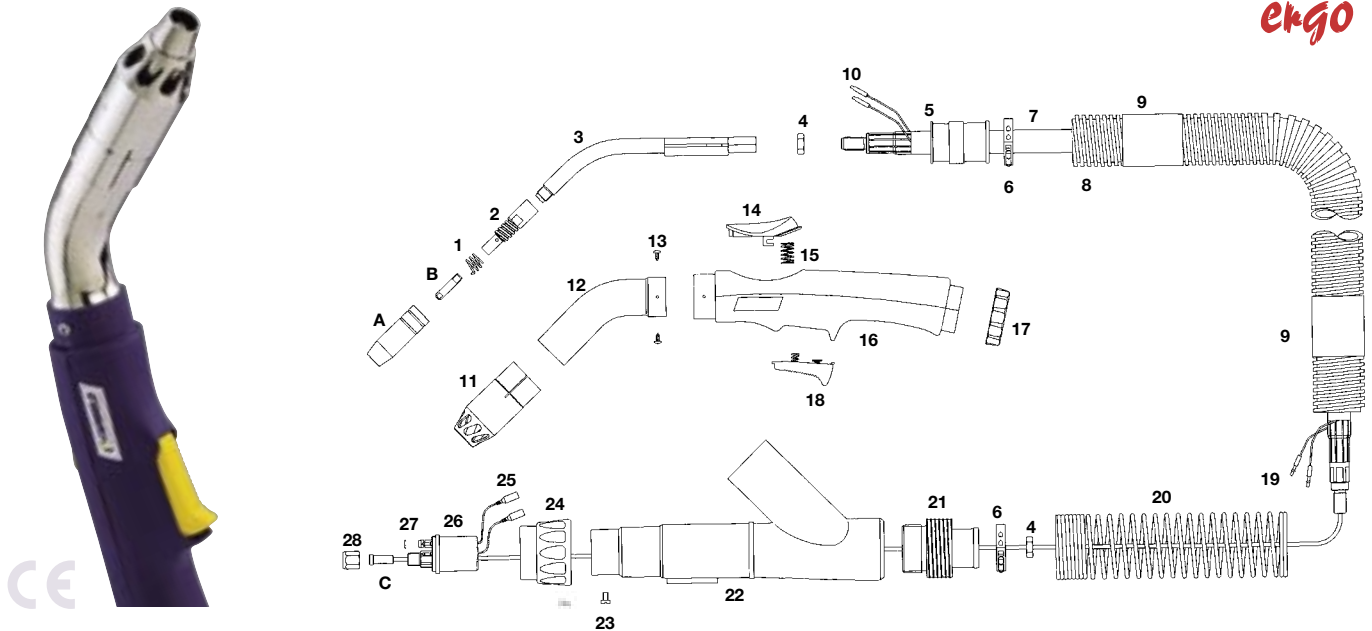
Cable Assembly Components			
Description	Part Number		
	3M	4M	5M
5 Outer Liner Assembly	B6008-30	B6008-40	B6008-50
6 Gas Hose Assembly	B5013-30	B5013-40	B5013-50
7 Water Inlet Hose Assembly	B5012-30	B5012-40	B5012-50
8 Power Cable Assembly	B6015-30	B6015-40	B6015-50
9 Switch Lead Assembly	B5010-30	B5010-40	B5010-50
12 Canvas Cover Assembly	B5019-30	B5019-40	B5019-50

\* Denotes Standard Build

# SAB 150A Air Cooled Fume Extraction MIG Welding Torch



Rating: 180A CO<sub>2</sub> 150A mixed gas, EN60974-7 @ 60% duty cycle. 0.8 to 1.0mm wires



Model		
Description	Part Number	
	<b>3.0 M</b>	<b>4.0 M</b>
Fume Torch c/w Euro fitting	SAB1500-30ER	SAB1500-40ER

Nozzles	
Part Number	Description
<b>A</b> B1529	Cylindrical Nozzle
B1530*	Conical Nozzle
B1531	Tapered Nozzle
B1532	Bottle Nozzle
B1533	Spot Welding Nozzle

Contact Tips	
Part Number	Description
<b>B</b> B1527-06	Contact Tip .023"/0.6mm M6 Ecu
B1527-08*	Contact Tip .030"/0.8mm M6 Ecu
B1527-09	Contact Tip .035"/0.9mm M6 Ecu
B1527-10	Contact Tip .040"/1.0mm M6 Ecu

Liners	
Part Number	Description
<b>C</b> B1535-30*	Steel Liner .023"- .035"/0.6-0.9mm X 3mt
B1535-40*	Steel Liner .023"- .035"/0.6-0.9mm X 4mt
B2524-30	Steel Liner .040"- .045"/1.0-1.2mm X 3mt
B2524-40	Steel Liner .040"- .045"/1.0-1.2mm X 4mt
B1536-30	Teflon Liner .023"- .035"/0.6-0.9mm X 3mt
B1536-40	Teflon Liner .023"- .035"/0.6-0.9mm X 4mt

Components	
Part Number	Description
<b>1</b> B1504	Shroud Spring
<b>2</b> SAB1507	Tip Adaptor
<b>3</b> SAB1501	Swan Neck
<b>4</b> B1505	Lock Nut
<b>5</b> SAB0017	Swivel Connector
<b>6</b> SAB0029	Hose Clamp
<b>7</b> B1517-30	Hyperflex Cable Assembly X 3mt
B1517-40	Hyperflex Cable Assembly X 4mt
<b>8</b> SAB0015-30	Flexible Hose X 3mt
SAB0015-40	Flexible Hose X 4mt
<b>9</b> SAB0049	Heatshrink
<b>10</b> SAB1829	Switch Wire Locating Pins
<b>11</b> SAB1593	Fume Nozzle
<b>12</b> SAB1592	Front Extraction Chamber
<b>13</b> SAB0010	Chamber Fixing Screw
<b>14</b> SAB2518	Yellow Vent
<b>15</b> SAB2519	Vent Spring
<b>16</b> SAB2514	Handle
<b>17</b> SAB8005	Handle Lock Nut
<b>18</b> SAB2516	Trigger
<b>19</b> B1522	Cable Terminal Male
<b>20</b> SAB0060	Housing Spring
<b>21</b> SAB5021	Extraction Chamber Connector
<b>22</b> SAB5022	Rear Extraction Chamber
<b>23</b> B1526	Gun Plug Screw
<b>24</b> B1519/BK	Gun Plug Nut c/w Insert
<b>25</b> B1523	Gun Plug Terminal
<b>26</b> B1528	Gun Plug Body c/w Spring Pins
<b>27</b> B1524	Gun Plug 'O' Ring
<b>28</b> B1525	Liner Nut

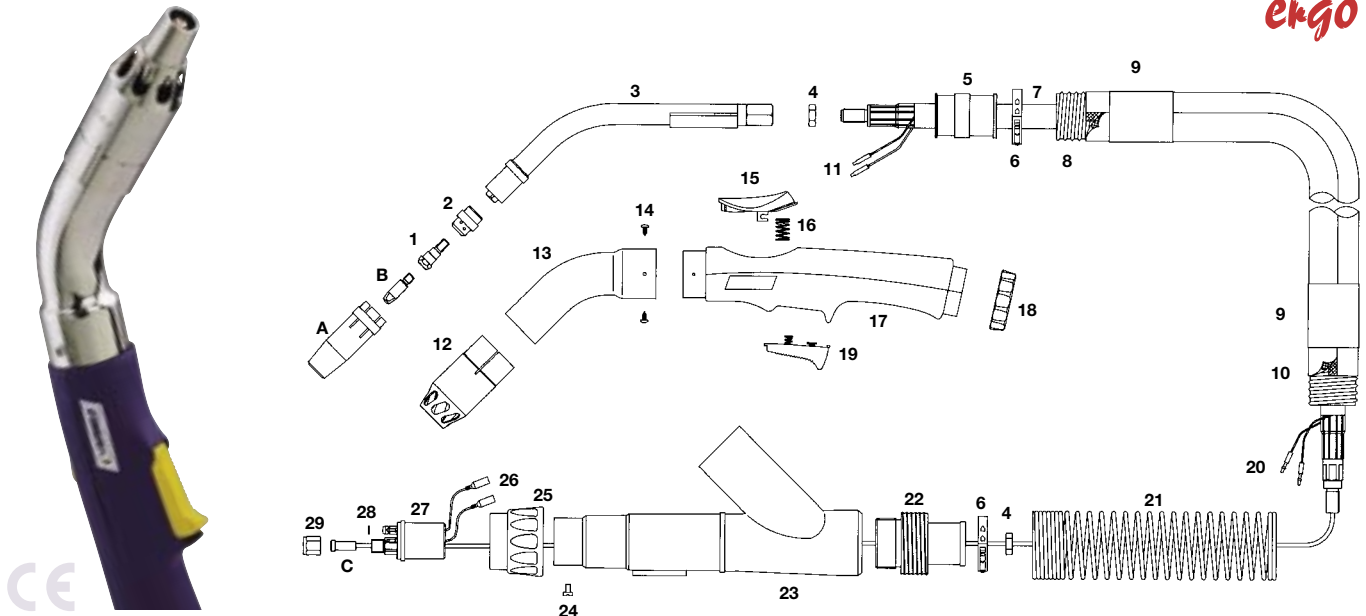
\* Denotes Standard Build



# SAB 240A Air Cooled Fume Extraction MIG Welding Torch

Rating: 250A CO<sub>2</sub> 220A mixed gas, EN60974-7 @ 60% duty cycle. 0.8 to 1.2mm wires

**ekgo**



Model			
Description	Part Number		
	3.0M	4.0 M	5.0 M
Fume Torch c/w Euro fitting	SAB2400-30ER	SAB2400-40ER	SAB2400-50ER

Part Number	Description
A B2415	Cylindrical Nozzle
B2416*	Conical Nozzle
B2417	Tapered Nozzle

Contact Tips		
Part Number	Description	
B B2504-08	Contact Tip .030"/0.8mm M6 Ecu	
B2504-09	Contact Tip .035"/0.9mm M6 Ecu	
B2504-10*	Contact Tip .040"/1.0mm M6 Ecu	
B2504-12	Contact Tip .045"/1.2mm M6 Ecu	
B2505-08	Contact Tip .030"/0.8mm M6 CuCrZr	
B2505-09	Contact Tip .035"/0.9mm M6 CuCrZr	
B2505-10	Contact Tip .040"/1.0mm M6 CuCrZr	
B2505-12	Contact Tip .045"/1.2mm M6 CuCrZr	

Liners		
Part Number	Description	
C B1535-30	Steel Liner .023"-.035"/0.6-0.9mm X 3mt	
B1535-40	Steel Liner .023"-.035"/0.6-0.9mm X 4mt	
B1535-50	Steel Liner .023"-.035"/0.6-0.9mm X 5mt	
B2524-30*	Steel Liner .040"-.045"/1.0-1.2mm X 3mt	
B2524-40*	Steel Liner .040"-.045"/1.0-1.2mm X 4mt	
B2524-50*	Steel Liner .040"-.045"/1.0-1.2mm X 5mt	
B3631-30	Steel Liner 1/16"/1.6mm X 3mt	
B1536-30	Teflon Liner .040"-.045"/0.6-0.9mm X 3mt	
B1536-40	Teflon Liner .040"-.045"/0.6-0.9mm X 4mt	
B1536-50	Teflon Liner .040"-.045"/0.6-0.9mm X 5mt	
B2513-30	Teflon Liner .040"-.045"/1.0-1.2mm X 3mt	
B2513-40	Teflon Liner .040"-.045"/1.0-1.2mm X 4mt	
B2513-50	Teflon Liner .040"-.045"/1.0-1.2mm X 5mt	

Components		
Part Number	Description	
1 B2412	Tip Adaptor	
2 B2405B	Diffuser Black	
B2405C*	Diffuser Ceramic	
B2405W	Diffuser White	
3 SAB2401	Swan Neck	
4 B1505	Lock Nut	
5 SAB0018	Swivel Connector	
6 SAB0023	Hose Clamp	
7 B2603-30	Hyperflex Cable Assembly X 3mt	
B2603-40	Hyperflex Cable Assembly X 4mt	
B2603-50	Hyperflex Cable Assembly X 5mt	
8 SAB0021-30	Flexi Hose 32mm X 3mt	
SAB0021-40	Flexi Hose 32mm X 4mt	
SAB0021-50	Flexi Hose 32mm X 5mt	
9 SAB0049	Heatshrink	
10 SAB0015-30	Sleeve X 3mt	
SAB0015-40	Sleeve X 4mt	
SAB0015-50	Sleeve X 5mt	
11 SAB1829	Switch Wire Locating Pins	
12 SAB2493	Fume Nozzle	
13 SAB2592	Front Extraction Chamber	
14 SAB0010	Chamber Fixing Screw	
15 SAB2518	Yellow Vent	
16 SAB2519	Vent Spring	
17 SAB2514	Handle	
18 SAB8005	Handle Lock Nut	
19 SAB2516	Trigger	
20 B1522	Cable Terminal Male	
21 SAB0061	Spring Support	
22 SAB5024	Extraction Chamber Connector	
23 SAB5022	Rear Extraction Chamber	
24 B1526	Gun Plug Screw	
25 B1519/BK	Gun Plug Nut c/w Insert	
26 B1523	Gun Plug Terminal	
27 B1528	Gun Plug Body c/w Spring Pins	
28 B1524	Gun Plug 'O' Ring	
29 B1525	Liner Nut	

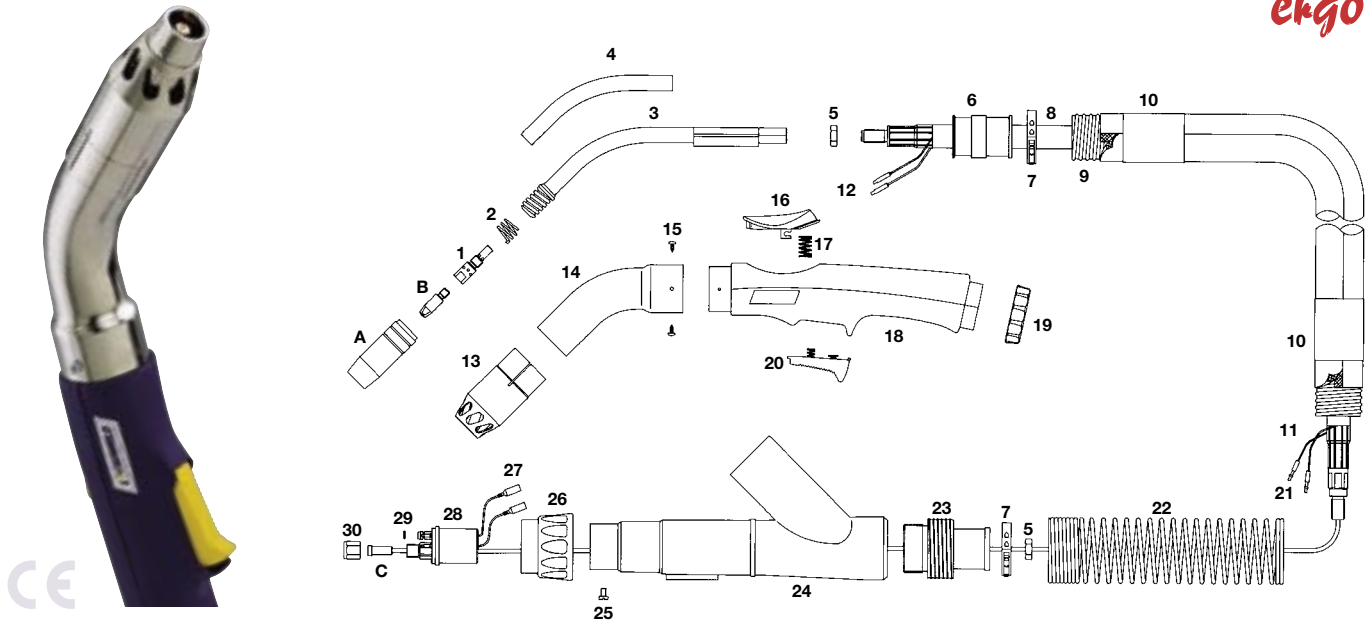
\* Denotes Standard Build

# SAB 250A Air Cooled Fume Extraction MIG Welding Torch



Rating: 140A CO<sub>2</sub> 120A mixed gas, EN60974-7 @ 60% duty cycle. 0.6 to 0.8mm wires

etgo



Model			
Description	Part Number		
	3.0 M	4.0 M	5.0 M
Fume Torch c/w Euro fittings	SAB2500-30ER	SAB2500-40ER	SAB2500-50ER

Nozzles	
Part Number	Description
A B2507	Cylindrical Nozzle
B2508*	Conical Nozzle
B2509	Tapered Nozzle
B2510	Bottle Nozzle
B2511	Spot Welding Nozzle

Contact Tips	
Part Number	Description
B B2504-08	Contact Tip .030"/0.8mm M6 Ecu
B2504-09	Contact Tip .035"/0.9mm M6 Ecu
B2504-10*	Contact Tip .040"/1.0mm M6 Ecu
B2504-12	Contact Tip .045"/1.2mm M6 Ecu
B2505-08	Contact Tip .030"/0.8mm M6 CuCrZr
B2505-09	Contact Tip .035"/0.9mm M6 CuCrZr
B2505-10	Contact Tip .040"/1.0mm M6 CuCrZr
B2505-12	Contact Tip .045"/1.2mm M6 CuCrZr

Liners	
Part Number	Description
C B1535-30	Steel Liner .023"- .035"/0.6-0.9mm X 3mt
B1535-40	Steel Liner .023"- .035"/0.6-0.9mm X 4mt
B1535-50	Steel Liner .023"- .035"/0.6-0.9mm X 5mt
B2524-30*	Steel Liner .040"- .045"/1.0-1.2mm X 3mt
B2524-40*	Steel Liner .040"- .045"/1.0-1.2mm X 4mt
B2524-50*	Steel Liner .040"- .045"/1.0-1.2mm X 5mt
B1536-30	Teflon Liner .023"- .035"/0.6-0.9mm X 3mt
B1536-40	Teflon Liner .023"- .035"/0.6-0.9mm X 4mt
B1536-50	Teflon Liner .023"- .035"/0.6-0.9mm X 5mt
B2513-30	Teflon Liner .040"- .045"/1.0-1.2mm X 3mt
B2513-40	Teflon Liner .040"- .045"/1.0-1.2mm X 4mt
B2513-50	Teflon Liner .040"- .045"/1.0-1.2mm X 5mt

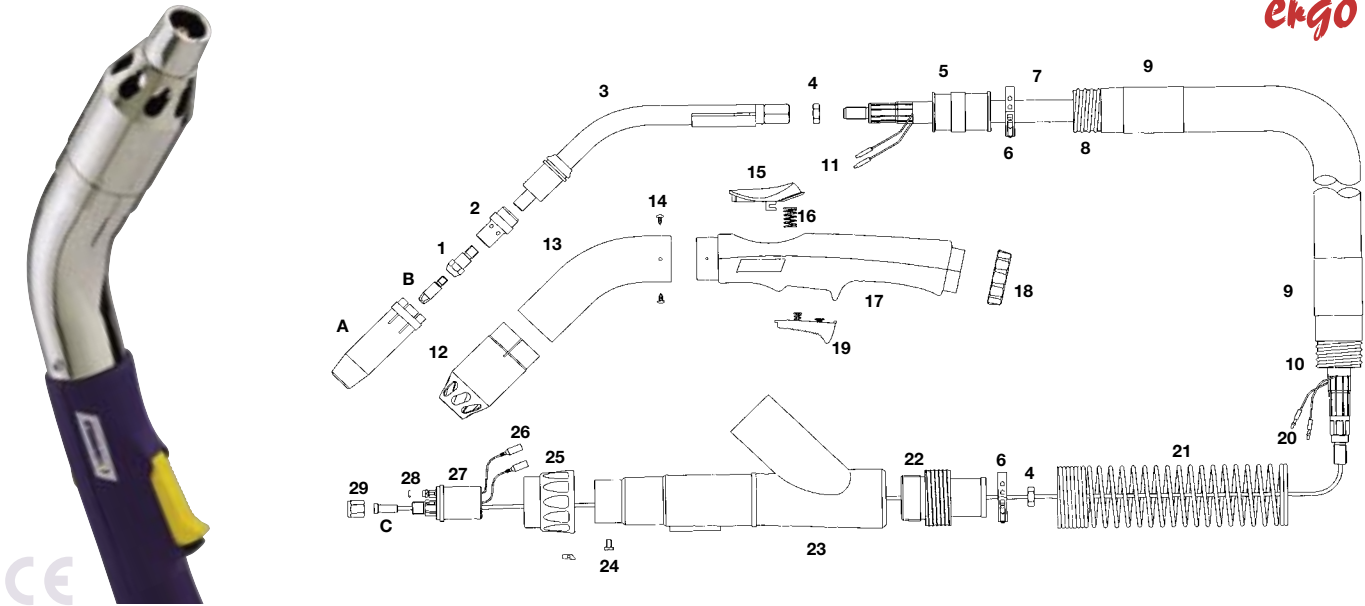
Components	
Part Number	Description
1 B2506	Tip Adaptor
2 B2502	Shroud Spring
3 SAB2501	Swan Neck
4 SAB1503	Heat Shrink
5 B1505	Lock Nut
6 SAB0018	Swivel Connector
7 SAB0023	Hose Clamp
8 B2503-30	Hyperflex Cable Assembly X 3mt
B2503-40	Hyperflex Cable Assembly X 4mt
B2503-50	Hyperflex Cable Assembly X 5mt
9 SAB0021-30	Flexi Hose 32mm X 3mt
SAB0021-40	Flexi Hose 32mm X 4mt
SAB0021-50	Flexi Hose 32mm X 5mt
10 SAB0049	Heatshrink
11 SAB0015-30	Fume Sleeve X 3mt
SAB0015-40	Fume Sleeve X 4mt
SAB0015-50	Fume Sleeve X 5mt
12 SAB1829	Switch Wire Locating Pins
13 SAB2593	Fume Nozzle
14 SAB2592	Front Extraction Chamber
15 SAB0010	Chamber Fixing Screw
16 SAB2518	Yellow Vent
17 SAB2519	Vent Spring
18 SAB2514	Handle
19 SAB8005	Handle Lock Nut
20 SAB2516	Trigger
21 B1522	Cable Terminal Male
22 SAB0061	Spring Support
23 SAB5024	Extraction Chamber Connector
24 SAB5022	Rear Extraction Chamber
25 B1526	Gun Plug Screw
26 B1519/BK	Gun Plug Nut c/w Insert
27 B1523	Gun Plug Terminal
28 B1528	Gun Plug Body c/w Spring Pins
29 B1524	Gun Plug 'O' Ring
30 B1525	Liner Nut

\* Denotes Standard Build

# SAB 360A Air Cooled Fume Extraction MIG / MAG Welding Torch

Rating: 300A CO<sub>2</sub> 270A mixed gas, EN60974-7 @ 60% duty cycle. 0.8 to 1.2mm wires

**ekgo**



Model			
Description	Part Number		
	3.0 M	4.0 M	5.0 M
Fume Torch c/w Euro fitting	SAB3600-30ER	SAB3600-40ER	SAB3600-50ER

Nozzles	
Part Number	Description
A B3615	Cylindrical Nozzle
B3616*	Conical Nozzle
B3617	Tapered Nozzle

Contact Tips	
Part Number	Description
B B2504-10	Contact Tip .040"/1.0mm M6 Ecu
B2504-12*	Contact Tip .045"/1.2mm M6 Ecu
B2505-10	Contact Tip .040"/1.0mm M6 CuCrZr
B2505-12	Contact Tip .045"/1.2mm M6 CuCrZr
B4014-10	Contact Tip .040"/1.0mm M8 Ecu
B4014-12	Contact Tip .045"/1.2mm M8 Ecu

Liners	
Part Number	Description
C B2524-30*	Steel Liner .040"- .045"/1.0-1.2mm X 3mt
B2524-40*	Steel Liner .040"- .045"/1.0-1.2mm X 4mt
B2524-50*	Steel Liner .040"- .045"/1.0-1.2mm X 5mt
B2513-30	Teflon Liner .040"- .045"/1.0-1.2mm X 3mt
B2513-40	Teflon Liner .040"- .045"/1.0-1.2mm X 4mt
B2513-50	Teflon Liner .040"- .045"/1.0-1.2mm X 5mt

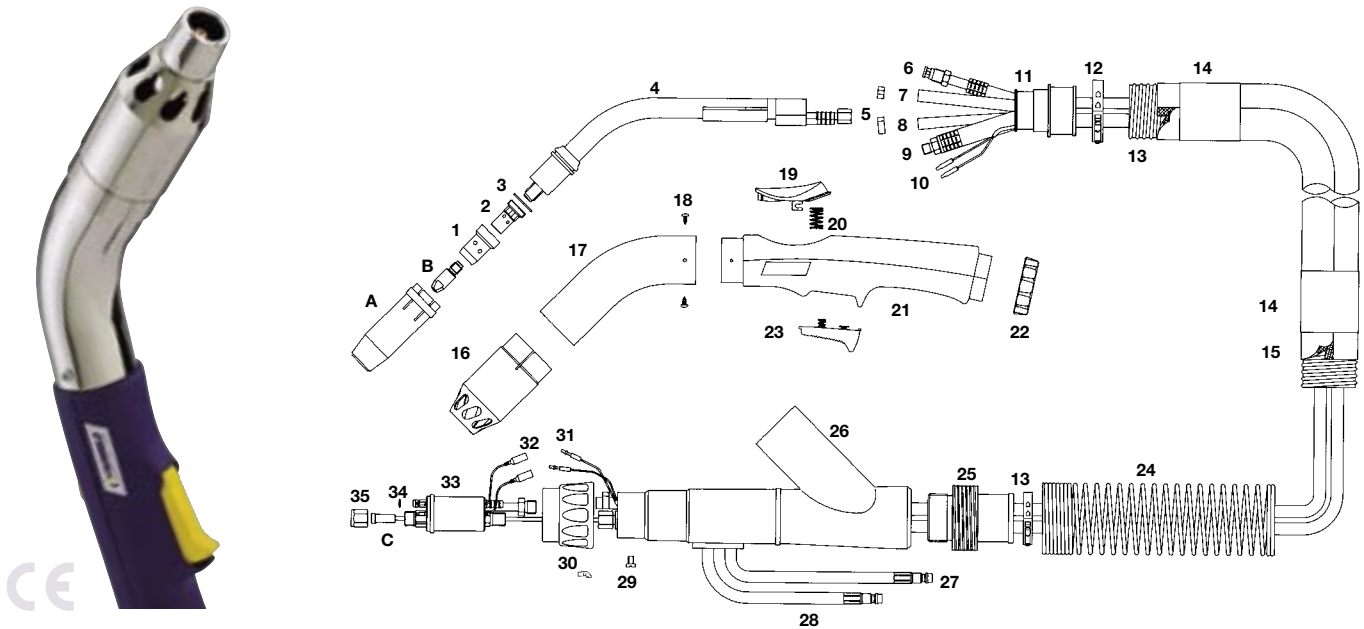
Components		
Part Number	Description	
1 B3612*	Tip Adaptor 28.5mm M6	
B3613	Tip Adaptor 31.5mm M6	
B3614	Tip Adaptor 28.5mm M8	
2 B3605B	Diffuser Black	
B3605C*	Diffuser Ceramic	
B3605W	Diffuser White	
3 SAB3603	Swan Neck	
4 B1505	Lock Nut	
5 SAB0018	Swivel Connector	
6 SAB0023	Hose Clamp	
7 B3609-30	Hyperflex Cable Assembly X 3mt	
B3609-40	Hyperflex Cable Assembly X 4mt	
B3609-50	Hyperflex Cable Assembly X 5mt	
8 SAB0021-30	Flexi Hose 32mm X 3mt	
SAB0021-40	Flexi Hose 32mm X 4mt	
SAB0021-50	Flexi Hose 32mm X 5mt	
9 SAB0049	Heatshrink	
10 SAB0015-30	Fume Hose Sleeve X 3mt	
SAB0015-40	Fume Hose Sleeve X 4mt	
SAB0015-50	Fume Hose Sleeve X 5mt	
11 SAB1829	Switch Wire Locating Pins	
12 SAB3693	Fume Nozzle	
13 SAB3692	Front Extraction Chamber	
14 SAB0010	Chamber Fixing Screw	
15 SAB2518	Yellow Vent	
16 SAB2519	Vent Spring	
17 SAB2514	Handle	
18 SAB8005	Handle Lock Nut	
19 SAB2516	Trigger	
20 B1522	Cable Terminal Male	
21 SAB0061	Spring Cable Support	
22 SAB5024	Extraction Chamber Connector	
23 SAB5022	Rear Extraction Chamber	
24 B1526	Gun Plug Screw	
25 B1519/BK	Gun Plug Nut c/w Insert	
26 B1523	Gun Plug Terminal	
27 B1528	Gun Plug Body c/w Spring Pins	
28 B1524	Gun Plug 'O' Ring	
29 B1525	Liner Nut	

\* Denotes Standard Build

# SAB 501W Water Cooled Fume Extraction MIG Welding Torch



Rating: 500A CO<sub>2</sub> 450A mixed gas, EN60974-7 @ 60% duty cycle. 1.0 to 2.4mm wires



Model			
Description	Part Number		
	3.0 M	4.0 M	5.0 M
Fume Torch c/w Euro fitting	SAB5000-30ER	SAB5000-40ER	SAB5000-50ER

Nozzles	
Part Number	Description
A B5027	Cylindrical Nozzle
B5028*	Conical Nozzle
B5029	Tapered Nozzle

Contact Tips	
Part Number	Description
B B4014-10	Contact Tip .040"/1.0mm M8 Ecu
B4014-12*	Contact Tip .045"/1.2mm M8 Ecu
B4014-16	Contact Tip 1/16"/1.6mm M8 Ecu
B4014-20	Contact Tip .080"/2.0mm M8 Ecu
B4015-10	Contact Tip .040"/1.0mm M8 CuCrZr
B4015-12	Contact Tip .045"/1.2mm M8 CuCrZr
B4015-16	Contact Tip 1/16"/1.6mm M8 CuCrZr

Liners	
Part Number	Description
C B5033-30	Plain Liner .040"- .045"/1.0-1.2mm X 3mt
B5033-40	Plain Liner .040"- .045"/1.0-1.2mm X 4mt
B5033-50	Plain Liner .040"- .045"/1.0-1.2mm X 5mt
B5034-30*	Plain Liner .045"- .1/16"/1.2-1.6mm X 3mt
B5034-40*	Plain Liner .045"- .1/16"/1.2-1.6mm X 4mt
B5034-50*	Plain Liner .045"- .1/16"/1.2-1.6mm X 5mt
B2513-30	Teflon Liner .040"- .045"/1.0-1.2mm X 3mt
B2513-40	Teflon Liner .040"- .045"/1.0-1.2mm X 4mt
B2513-50	Teflon Liner .040"- .045"/1.0-1.2mm X 5mt
B3626-30	Teflon Liner .045"- .1/16"/1.2mm-1.6mm X 3mt
B3626-40	Teflon Liner .045"- .1/16"/1.2mm-1.6mm X 4mt
B3626-50	Teflon Liner .045"- .1/16"/1.2mm-1.6mm X 5mt

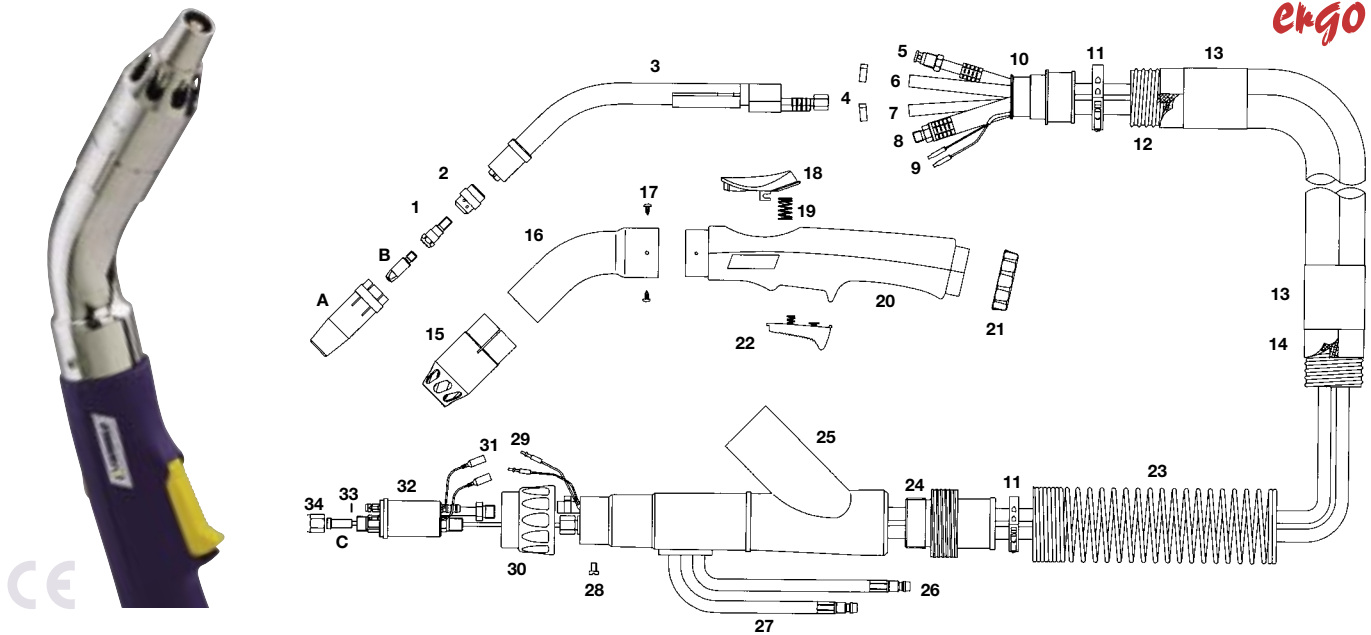
\* Denotes Standard Build

Components		
Part Number	Description	
1	B5005B	Diffuser Black
	B5005C*	Diffuser Ceramic
	B5005W	Diffuser White
2	B5001	Tip Adaptor 25.0mm M8
3	B5003	Insulating Washer
4	SAB5002	Swan Neck
5	B5024	Water Hose Clamp 9.5mm
11	SAB0019	Swivel Connector
12	SAB0024	Hose Clamp
14	SAB0049	Heatshrink
16	SAB3693	Fume Nozzle
17	SAB3692	Front Extraction Chamber
18	SAB0010	Chamber Fixing Screw
19	SAB2518	Yellow Vent
20	SAB2519	Vent Spring
21	SAB2514	Handle
22	SAB8005	Handle Lock Nut
23	SAB2516	Trigger
24	SAB0063	Spring Cable Support
25	SAB5025	Extraction Chamber Connector
26	SAB5023	Rear Extraction Chamber
27	B5023	Water Hose Nipple
28	B5017	Water Outlet Hose O/Braid
29	B1526	Gun Plug Screw
30	B1519/BK	Gun Plug Nut c/w insert
31	B1522	Cable Terminal Male
32	B1523	Gun Plug Terminal
33	B5098	Gun Plug Body c/w Spring Pins
34	B1524	Gun Plug 'O' Ring
35	B1525	Liner Nut

Cable Assembly Components				
Description	Part Number			
	3M	4M	5M	
6 Outer Liner Assembly	B5008-30	B5008-40	B5008-50	
7 Gas Hose Assembly	B5013-30	B5013-40	B5013-50	
8 Water Inlet Hose Assy	B5012-30PVC	B5012-40PVC	B5012-50PVC	
9 Power Cable Assembly	B5015-30PVC	B5015-40PVC	B5015-50PVC	
10 Switch Lead Assembly	B5010-30	B5010-40	B5010-50	
13 Flexible Hose	SAB0045-30	SAB0045-40	SAB0045-50	
15 Fume Hose Sleeve	SAB0016-30	SAB0016-40	SAB0016-50	

# SAB 240W Water Cooled Fumed Extraction MIG Welding Torch

Rating: 300A CO<sub>2</sub> 270A mixed gas, EN60974-7 @ 100% duty cycle. 0.8 to 1.2mm wires



Model				
Description	Part Number	3.0 M	4.0 M	5.0 M
Fume Torch c/w Euro fitting	SAB240W-30ER	SAB240W-40ER	SAB240W-50ER	

Nozzles	
Part Number	Description
A B2415	Cylindrical Nozzle
B2416*	Conical Nozzle
B2417	Tapered Nozzle

Contact Tips	
Part Number	Description
B B2504-08	Contact Tip .030"/0.8mm M6 Ecu
B2504-09	Contact Tip .035"/0.9mm M6 Ecu
B2504-10*	Contact Tip .040"/1.0mm M6 Ecu
B2504-12	Contact Tip .045"/1.2mm M6 Ecu
B2505-08	Contact Tip .030"/0.8mm M6 CuCrZr
B2505-09	Contact Tip .035"/0.9mm M6 CuCrZr
B2505-10	Contact Tip .040"/1.0mm M6 CuCrZr
B2505-12	Contact Tip .045"/1.2mm M6 CuCrZr

Liners	
Part Number	Description
C B5033-30*	Plain Liner .040"- .045"/1.0-1.2mm X 3mt
B5033-40*	Plain Liner .040"- .045"/1.0-1.2mm X 4mt
B5033-50*	Plain Liner .040"- .045"/1.0-1.2mm X 5mt
B1536-30	Teflon Liner .023"- .035"/0.6-0.9mm X 3mt
B1536-40	Teflon Liner .023"- .035"/0.6-0.9mm X 4mt
B1536-50	Teflon Liner .023"- .035"/0.6-0.9mm X 5mt
B2513-30	Teflon Liner .040"- .045"/1.0-1.2mm X 3mt
B2513-40	Teflon Liner .040"- .045"/1.0-1.2mm X 4mt
B2513-50	Teflon Liner .040"- .045"/1.0-1.2mm X 5mt

\* Denotes Standard Build

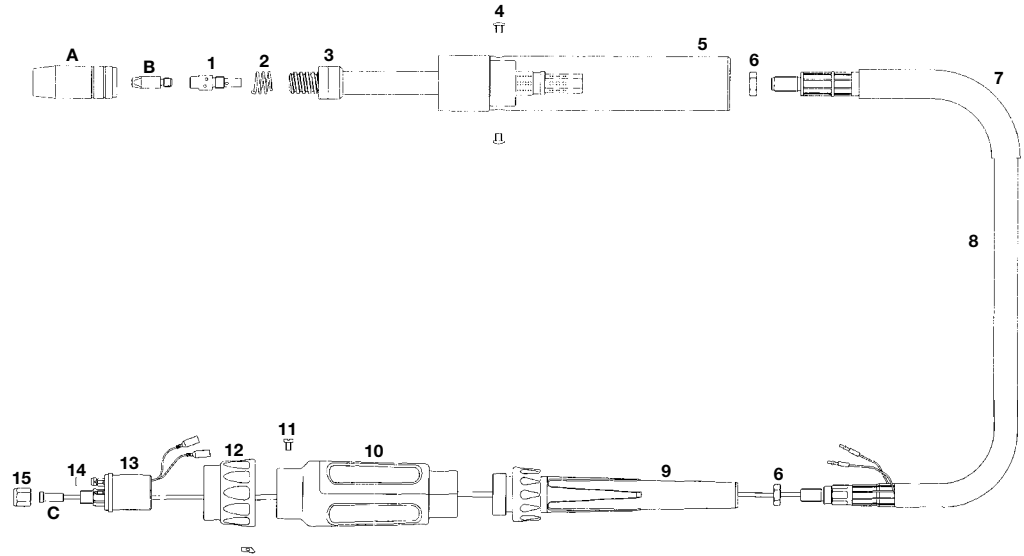
Components	
Part Number	Description
1 B2412	Tip Adaptor
2 B2405B	Diffuser Black
B2405C*	Diffuser Ceramic
B2405W	Diffuser White
3 SAB2409	Swan Neck
4 B5024	Water Hose Clamp 9.5mm
10 SAB0019	Swivel Connector
11 SAB0024	Hose Clamp
13 SAB0049	Heatshrink
15 SAB2493	Fume Nozzle
16 SAB2592	Front Extraction Chamber
17 SAB0010	Chamber Fixing Screw
18 SAB2518	Yellow Vent
19 SAB2519	Vent Spring
20 SAB2514	Handle
21 SAB8005	Handle Lock Nut
22 SAB2516	Trigger
23 SAB0063	Spring Cable Support
24 SAB5025	Extraction Chamber Connector
25 SAB5023	Rear Extraction Chamber
26 B5023	Water Hose Nipple
27 B5017	Water Outlet Hose O/Braid
28 B1526	Gun Plug Screw
29 B1522	Cable Terminal Male
30 B1519/BK	Gun Plug Nut c/w insert
31 B1523	Gun Plug Terminal
32 B5098	Gun Plug Body c/w Spring Pins
33 B1524	Gun Plug 'O' Ring
34 B1525	Liner Nut

Cable Assembly Components			
Description	Part Number		
	3M	4M	5M
5 Outer Liner Assembly	B5008-30	B5008-40	B5008-50
6 Gas Hose Assembly	B5013-30	B5013-40	B5013-50
7 Water Inlet Hose Assy	B5012-30PVC	B5012-40PVC	B5012-50PVC
8 Power Cable Assembly	B5015-30PVC	B5015-40PVC	B5015-50PVC
9 Switch Lead Assembly	B5010-30	B5010-40	B5010-50
12 Flexible Hose	SAB0045-30	SAB0045-40	SAB0045-50
14 Fume Hose Sleeve	SAB0016-30	SAB0016-40	SAB0016-50

# SB 250A Air Cooled Automatic MIG Welding Torch



Rating: 140A CO<sub>2</sub> 120A mixed gas, EN60974-7 @ 60% duty cycle. 0.6 to 0.8mm wires



Model				
Description	Part Number			
	2.0 M	3.0 M	4.0 M	
Welding Torch c/w Euro fitting	B2500-20A	B2500-30A	B2500-40A	

Nozzles	
Part Number	Description
A B2507	Cylindrical Nozzle
B2508*	Conical Nozzle
B2509	Tapered Nozzle
B2510	Bottle Nozzle
B2511	Spot Welding Nozzle

Contact Tips	
Part Number	Description
B B2504-08	Contact Tip .030"/0.8mm M6 Ecu
B2504-09	Contact Tip .035"/0.9mm M6 Ecu
B2504-10*	Contact Tip .040"/1.0mm M6 Ecu
B2504-12	Contact Tip .045"/1.2mm M6 Ecu
B2505-08	Contact Tip .030"/0.8mm M6 CuCrZr
B2505-09	Contact Tip .035"/0.9mm M6 CuCrZr
B2505-10	Contact Tip .040"/1.0mm M6 CuCrZr
B2505-12	Contact Tip .045"/1.2mm M6 CuCrZr

Liners	
Part Number	Description
C B1535-30	Steel Liner .030"- .035"/0.6-0.9mm X 3mt
B1535-40	Steel Liner .030"- .035"/0.6-0.9mm X 4mt
B2524-30*	Steel Liner .040"- .045"/1.0-1.2mm X 3mt
B2524-40*	Steel Liner .040"- .045"/1.0-1.2mm X 4mt
B1536-30	Teflon Liner 0.6-0.9mm X 3mt
B1536-40	Teflon Liner .030"- .035"/0.6-0.9mm X 4mt
B2513-30	Teflon Liner .040"- .045"/1.0-1.2mm X 3mt
B2513-40	Teflon Liner .040"- .045"/1.0-1.2mm X 4mt

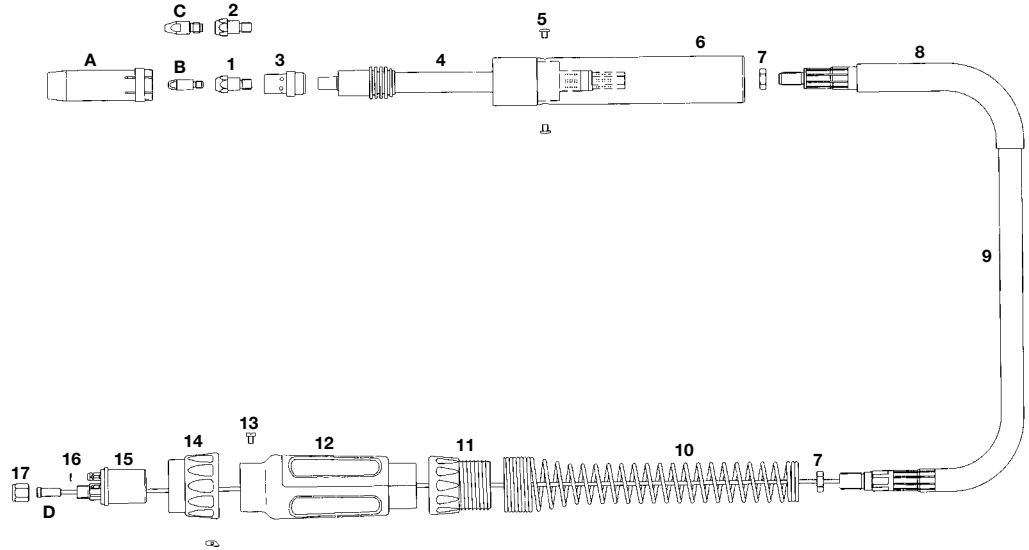
Components		
Part Number	Description	
1	B2506	Tip Adaptor
2	B2502	Shroud Spring
3	B2520	Auto Straight Neck
4	B3629	Handle Screw
5	B3630	Automatic Handle
6	B1505	Lock Nut
7	B3660	Cable Support
8	B2503-20	Hyperflex Cable Assembly X 2mt
	B2503-30	Hyperflex Cable Assembly X 3mt
	B2503-40	Hyperflex Cable Assembly X 4mt
9	B2841	Cable Support
10	B1518	Gun Plug Housing c/w Nut
11	B1526	Gun Plug Screw
12	B1519	Gun Plug Nut c/w Insert
13	B1528	Gun Plug Body c/w Spring Pins
14	B1524	Gun Plug 'O' Ring
15	B1525	Liner Nut

\* Denotes Standard Build



# SB 360A Air Cooled Automatic MIG Welding Torch

Rating: 300A CO<sub>2</sub> 270A mixed gas, EN60974-7 @ 60% duty cycle. 0.8to 1.2mm wires



Model			
Description	Part Number		
	2.0 M	3.0 M	4.0 M
Welding Torch c/w Euro fitting	B3600-20A	B3600-30A	B3600-40A

Nozzles	
Part Number	Description
A B3615	Cylindrical Nozzle
B3616*	Conical Nozzle
B3617	Tapered Nozzle

Contact Tips	
Part Number	Description
B B2504-10	Contact Tip .040"/1.0mm M6 Ecu
B2504-12*	Contact Tip .045"/1.2mm M6 Ecu
B2505-10	Contact Tip .040"/1.0mm M6 CuCrZr
B2505-12	Contact Tip .045"/1.2mm M6 CuCrZr
C B4014-10	Contact Tip .040"/1.0mm M8 Ecu
B4014-12	Contact Tip .045"/1.2mm M8 Ecu
B4015-10	Contact Tip .040"/1.0mm M8 CuCrZr
B4015-12	Contact Tip .045"/1.2mm M8 CuCrZr

Liners	
Part Number	Description
D B2524-30*	Steel Liner .040"- .045"/1.0-1.2mm X 3mt
B2524-40*	Steel Liner .040"- .045"/1.0-1.2mm X 4mt
B2513-30	Teflon Liner .040"- .045"/1.0-1.2mm X 3mt
B2513-40	Teflon Liner .040"- .045"/1.0-1.2mm X 4mt

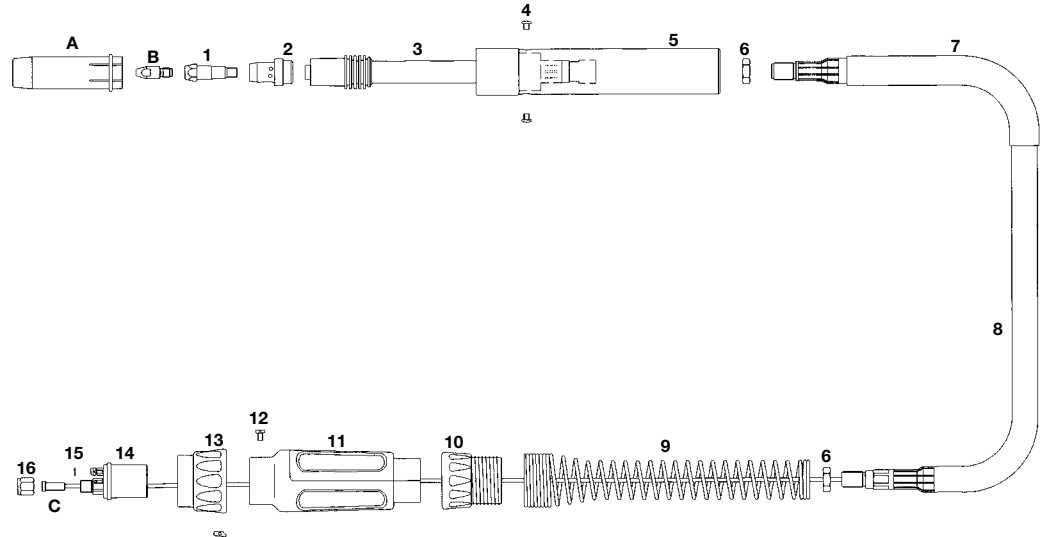
Components		
Part Number	Description	
1 B3612	Tip Adaptor 28.5mm M6	
2 B3613	Tip Adaptor 31.5mm M6	
B3614	Tip Adaptor 28.5mm M8	
3 B3605B	Diffuser Black	
B3605C*	Diffuser Ceramic	
B3605W	Diffuser White	
4 B3627	Auto Straight Neck	
5 B3629	Handle Screw	
6 B3630	Automatic Handle	
7 B1505	Lock Nut	
8 B3660	Cable Support	
9 B3609-20	Hyperflex Cable Assembly X 2mt	
B3609-30	Hyperflex Cable Assembly X 3mt	
B3609-40	Hyperflex Cable Assembly X 4mt	
10 B8026	Spring Cable Support	
11 B8028	Spring Cable Support Nut	
12 B1518	Gun Plug Housing c/w Nut	
13 B1526	Gun Plug Screw	
14 B1519	Gun Plug Nut c/w Insert	
15 B1528	Gun Plug Body c/w Spring Pins	
16 B1524	Gun Plug 'O' Ring	
17 B1525	Liner Nut	

\* Denotes Standard Build

# SB 400A Air Cooled Automatic MIG Welding Torch



Rating: 380A CO<sub>2</sub> 360A mixed gas, EN60974-7 @ 60% duty cycle. 1.0 to 2.4mm wires



Model			
Description	Part Number		
	2.0 M	3.0 M	4.0 M
Welding Torch c/w Euro fitting	B4000-20A	B4000-30A	B4000-40A

Nozzles	
Part Number	Description
A B4016	Cylindrical Nozzle
B4017*	Conical Nozzle
B4018	Tapered Nozzle

Contact Tips	
Part Number	Description
B B4014-10	Contact Tip .040"/1.0mm M8 Ecu
B4014-12*	Contact Tip 045"/1.2mm M8 Ecu
B4014-16	Contact Tip 1/16"/1.6mm M8 Ecu
B4014-20	Contact Tip .080"/2.0mm M8 Ecu
B4014-24	Contact Tip .090"/2.4mm M8 Ecu
B4015-10	Contact Tip .040"/1.0mm M8 CuCrZr
B4015-12	Contact Tip .045"/1.2mm M8 CuCrZr
B4015-16	Contact Tip 1/16"/1.6mm M8 CuCrZr
B4015-24	Contact Tip .080"/2.4mm M8 CuCrZr

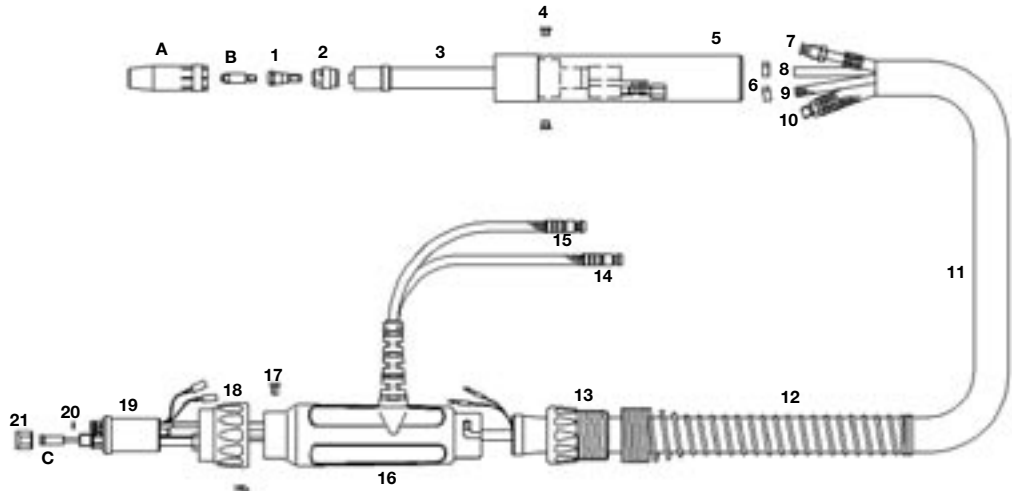
Liners	
Part Number	Description
C B2524-30	Steel Liner .040"- .045"/1.0-1.2mm X 3mt
B2524-40	Steel Liner .040"- .045"/1.0-1.2mm X 4mt
B3631-30*	Steel Liner 1/16"/1.6mm X 3mt
B3631-40*	Steel Liner 1/16"/1.6mm X 4mt
B4631-30	Steel Liner .080"- .090"/2.0-2.4mm X 3mt
B4631-40	Steel Liner .080"- .090"/2.0-2.4mm X 4mt
B2513-30	Teflon Liner .040"- .045"/1.0-1.2mm X 3mt
B2513-40	Teflon Liner .040"- .045"/1.0-1.2mm X 4mt
B3626-30	Teflon Liner .045"- 1/16"/1.2mm-1.6mm X 3mt
B3626-40	Teflon Liner .045"- 1/16"/1.2mm-1.6mm X 4mt

Components		
Part Number	Description	
1 B4005	Tip Adaptor	
2 B4003B	Diffuser Black	
B4003C*	Diffuser Ceramic	
3 B4028	Auto Straight Neck	
4 B3629	Handle Screw	
5 B3630	Automatic Handle	
6 B4050	Lock Nut	
7 B4060	Cable Support	
8 B4010-20	Hyperflex Cable Assembly X 2mt	
B4010-30	Hyperflex Cable Assembly X 3mt	
B4010-40	Hyperflex Cable Assembly X 4mt	
9 B8026	Spring Cable Support	
10 B8028	Spring Cable Nut	
11 B1518	Gun Plug Housing c/w Nut	
12 B1526	Gun Plug Screw	
13 B1519	Gun Plug Nut c/w Insert	
14 B4038	Gun Plug Body c/w Spring Pins	
15 B1524	Gun Plug 'O' Ring	
16 B1525	Liner Nut	

\* Denotes Standard Build

# SB 240W Water Cooled Automatic MIG Welding Torch

Rating: 140A CO<sub>2</sub> 120A mixed gas, EN60974-7 @ 60% duty cycle. 0.6 to 0.8mm wires



Model			
Description	Part Number		
	2.0 M	3.0 M	4.0 M
Welding Torch c/w Euro fitting	B2400W-20A	B2400W-30A	B2400W-40A

Nozzles	
Part Number	Description
A B2415	Cylindrical Nozzle
B2416*	Conical Nozzle
B2417	Tapered Nozzle

Contact Tips	
Part Number	Description
B B2504-08	Contact Tip .030"/0.8mm M6 Ecu
B2504-09	Contact Tip .035"/0.9mm M6 Ecu
B2504-10*	Contact Tip .040"/1.0mm M6 Ecu
B2504-12	Contact Tip .045"/1.2mm M6 Ecu
B2505-08	Contact Tip .030"/0.8mm M6 CuCrZr
B2505-09	Contact Tip .035"/0.9mm M6 CuCrZr
B2505-10	Contact Tip .040"/1.0mm M6 CuCrZr
B2505-12	Contact Tip .045"/1.2mm M6 CuCrZr

Liners	
Part Number	Description
C B5032-30*	Plain Liner .030"- .040"/0.8-1.0mm X 3mt
B5032-40*	Plain Liner .030"- .040"/0.8-1.0mm X 4mt
B5033-30	Plain Liner .040"- .045"/1.0-1.2mm X 3mt
B5033-40	Plain Liner .040"- .045"/1.0-1.2mm X 4mt
B1536-30	Teflon Liner .023"- .035"/0.6-0.9mm X 3mt
B1536-40	Teflon Liner .023"- .035"/0.6-0.9mm X 4mt
B2513-30	Teflon Liner .040"- .045"/1.0-1.2mm X 3mt
B2513-40	Teflon Liner .040"- .045"/1.0-1.2mm X 4mt

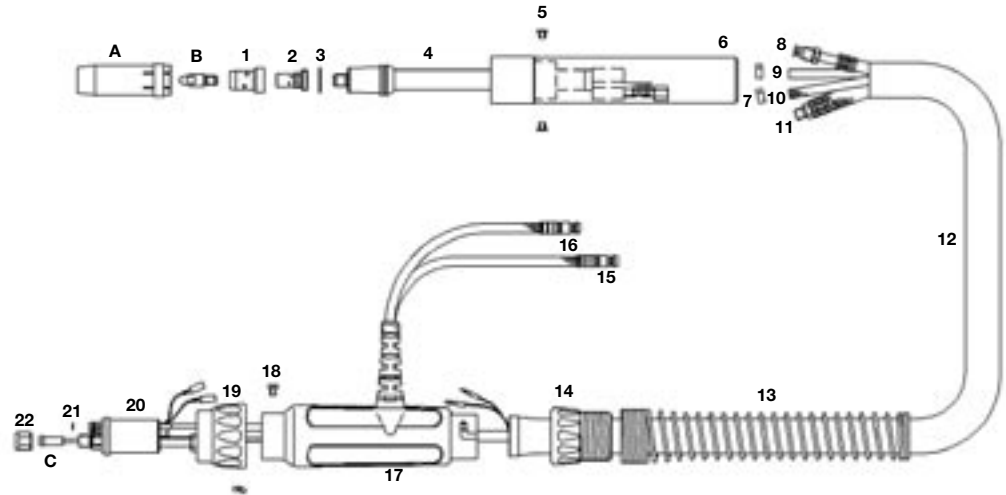
Components		
Part Number	Description	
1	B2412	Tip Adaptor
2	B2405B	Diffuser Black
	B2405C*	Diffuser Ceramic
	B2405W	Diffuser White
3	B2427	Auto Straight Neck
4	B3629	Handle Screw
5	B3630	Automatic Handle
6	B5024	Water Hose Clamp 9.5mm
7	B5008-30	Outer Liner Assembly X 3mt
	B5008-40	Outer Liner Assembly X 4mt
8	B5013-30	Gas Hose Assembly X 3mt
	B5013-40	Gas Hose Assembly X 4mt
9	B5012-30	Water Inlet Hose Assy X 3mt
	B5012-40	Water Inlet Hose Assy X 4mt
10	B5015-20	Power Cable Assembly X 2mt
	B5015-30	Power Cable Assembly X 3mt
	B5015-40	Power Cable Assembly X 4mt
11	B5019-20	Canvas Cover Assembly X 2mt
	B5019-30	Canvas Cover Assembly X 3mt
	B5019-40	Canvas Cover Assembly X 4mt
12	B8027	Spring Cable Support
13	B8028	Spring Cable Support Nut
14	B5023	Water Hose Nipple
15	B5017	Water Outlet Hose O/Braid
16	B3240	Gun Plug Housing c/w In/Outlet Supports
17	B1526	Gun Plug Screw
18	B1519	Gun Plug Nut c/w Insert
19	B5098	Gun Plug Body c/w Spring Pins
20	B1524	Gun Plug `O` Ring
21	B1525	Liner Nut

\* Denotes Standard Build

# SB 501W Water Cooled Automatic MIG Welding Torch



Rating: 500A CO<sub>2</sub> 450A mixed gas, EN60974-7 @ 100% duty cycle. 1.0 to 1.6mm wires



Model			
Description	Part Number		
	2.0 M	3.0 M	4.0 M
Welding Torch c/w Euro fitting	B5000-20A	B5000-30A	B5000-40A

Nozzles	
Part Number	Description
A B5027	Cylindrical Nozzle
B5028*	Conical Nozzle
B5029	Tapered Nozzle

Contact Tips	
Part Number	Description
B B4014-10	Contact Tip .040"/1.0mm M8 Ecu
B4014-12*	Contact Tip .045"/1.2mm M8 Ecu
B4014-16	Contact Tip 1/16"/1.6mm M8 Ecu
B4015-10	Contact Tip .040"/1.0mm M8 CuCrZr
B4015-12	Contact Tip .045"/1.2mm M8 CuCrZr
B4015-16	Contact Tip 1/16"/1.6mm M8 CuCrZr

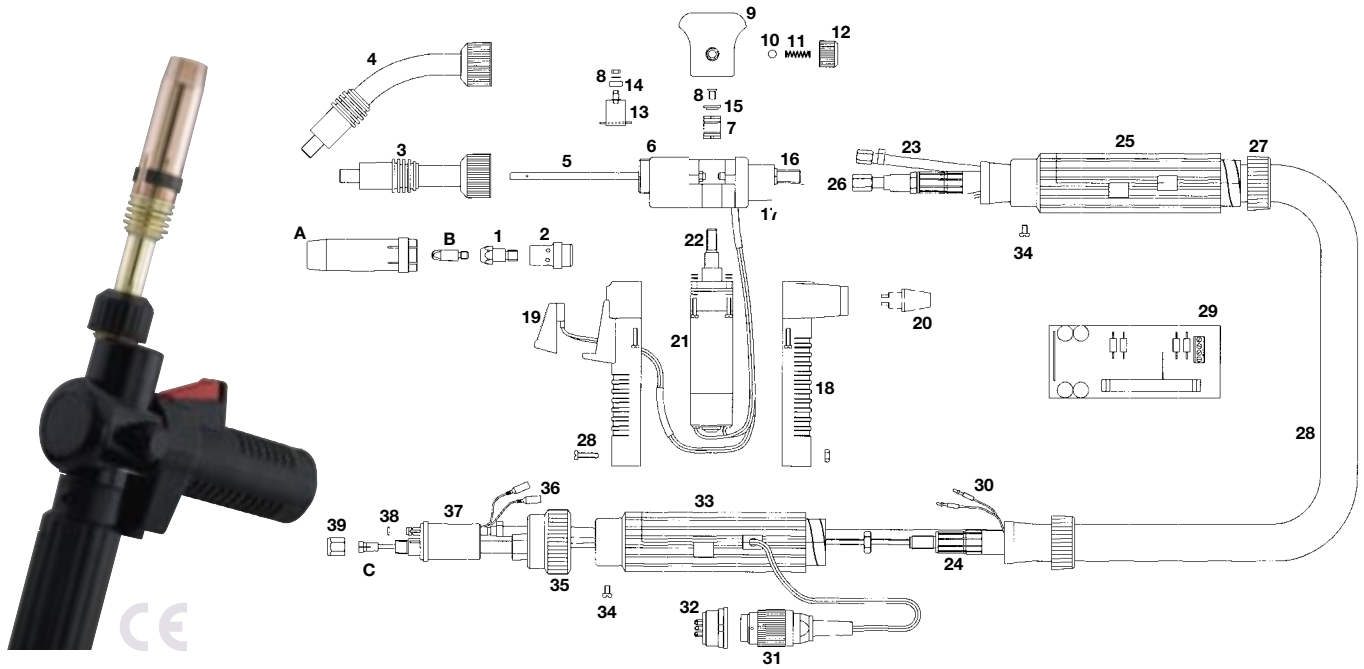
Liners	
Part Number	Description
C B5033-30	Plain Liner .040-.045"/1.0-1.2mm X 3mt
B5033-40	Plain Liner .040-.045"/1.0-1.2mm X 4mt
B5034-30*	Plain Liner .045"-1/16"/1.2-1.6mm X 3mt
B5034-40*	Plain Liner .045-1/16"/1.2-1.6mm X 4mt
B4033-30	Plain Liner .080-.090"/2.0-2.4mm X 3mt
B4033-40	Plain Liner .080-.090"/2.0-2.4mm X 4mt
B2513-30	Teflon Liner .040-.045"/1.0-1.2mm X 3mt
B2513-40	Teflon Liner .040-.045"/1.0-1.2mm X 4mt
B3626-30	Teflon Liner .045"-1/16"/1.2mm-1.6mm X 3mt
B3626-40	Teflon Liner .045"-1/16"/1.2mm-1.6mm X 4mt

Components		
Part Number	Description	
1	B5005B	Diffuser Black
	B5005C*	Diffuser Ceramic
	B5005W	Diffuser White
2	B5001	Tip Adaptor 25.0mm M8
3	B5003	Insulating Washer
4	B5002A	Auto Straight Neck
5	B3629	Handle Screw
6	B3630	Automatic Handle
7	B5024	Water Hose Clamp 9.5mm
8	B5008-30	Outer Liner Assembly X 3mt
	B5008-40	Outer Liner Assembly X 4mt
9	B5013-30	Gas Hose Assembly X 3mt
	B5013-40	Gas Hose Assembly X 4mt
10	B5012-30	Water Inlet Hose Assy X 3mt
	B5012-40	Water Inlet Hose Assy X 4mt
11	B5015-20	Power Cable Assembly X 2mt
	B5015-30	Power Cable Assembly X 3mt
	B5015-40	Power Cable Assembly X 4mt
12	B5019-20	Canvas Cover Assembly X 2mt
	B5019-30	Canvas Cover Assembly X 3mt
	B5019-40	Canvas Cover Assembly X 4mt
13	B8027	Spring Cable Support
14	B8028	Spring Cable Support Nut
15	B5023	Water Hose Nipple
16	B5017	Water Outlet Hose O/Braid
17	B3240	Gun Plug Housing c/w In/Outlet Supports
18	B1526	Gun Plug Screw
19	B1519	Gun Plug Nut c/w Insert
20	B5098	Gun Plug Body c/w Spring Pins
21	B1524	Gun Plug 'O' Ring
22	B1525	Liner Nut

\* Denotes Standard Build

# PP 360A Air Cooled MIG Welding Torch

Rating: 300A CO<sub>2</sub> 270A mixed gas, EN60974-7 @ 60% duty cycle. 0.8 to 1.2mm wires



Model	
Description	Part Number
	<b>8.0M</b>
180° Neck Push Pull Welding Torch c/w Euro Fitting	PP3600A-80
45° Neck Push Pull Welding Torch c/w Euro Fitting	PP3645A-80

Nozzles	
Part Number	Description
A B3615	Cylindrical Nozzle
B3616*	Conical Nozzle
B3617	Tapered Nozzle

Contact Tips	
Part Number	Description
B B2504-09	Contact Tip .035"/0.9mm M6 Ecu
B2504-10	Contact Tip .040"/1.0mm M6 Ecu
B2504-12*	Contact Tip .045"/1.2mm M6 Ecu

Liners	
Part Number	Description
C B1536-80	Teflon Liner .035"- .040"/0.6-0.9mm X 8mt
B2513-80	Teflon Liner .040"- .045"/1.0-1.2mm X 8mt
B3626-80	Teflon Liner .045"-1/16"/1.2mm-1.6mm X 8mt

Components	
Part Number	Description
1 B3612	Tip Adaptor 28.5mm M6
2 B3605B	Diffuser Black
B3605C	Diffuser Ceramic
B3605W*	Diffuser White
3 B3638	Straight Neck
4 B3638-45	Swan Neck
5 B3662	Contact Tube
6 B3639	Torch Body
7 B3656-08	Drive Roll 0.8mm

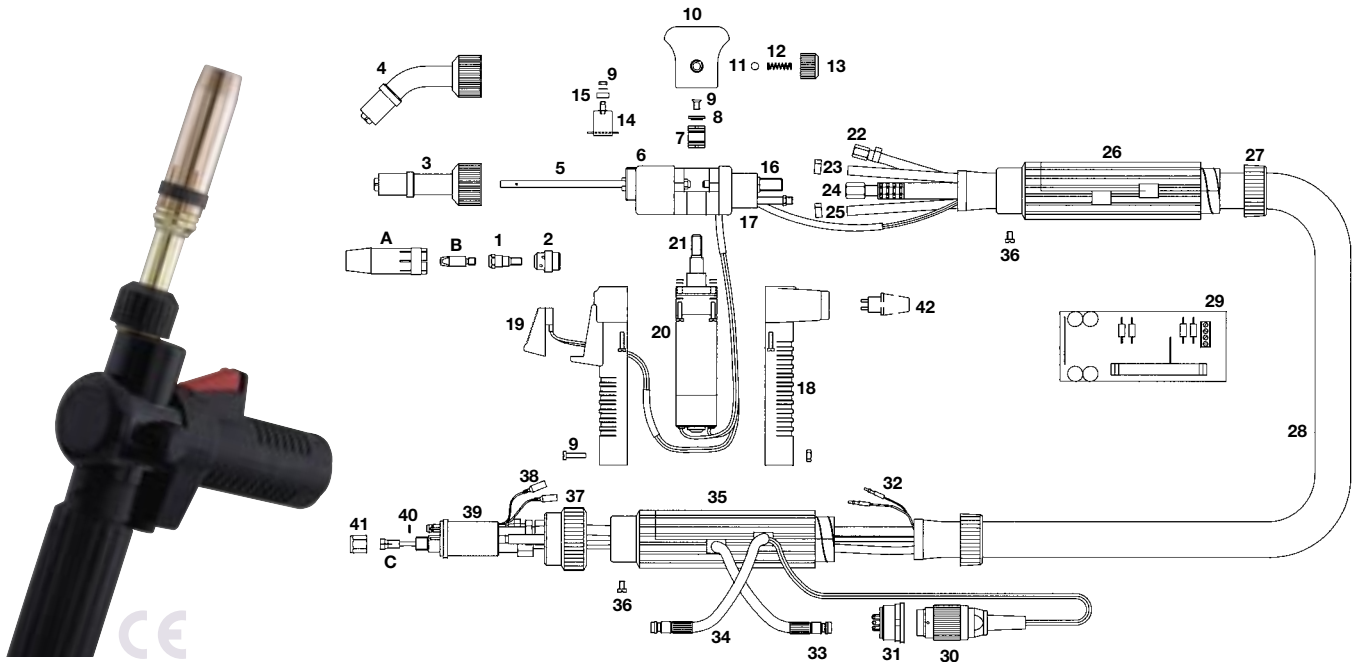
B3656-08A	Drive Roll 0.8mm Aluminium
B3656-10	Drive Roll 1.0mm
B3656-10A	Drive Roll 1.0mm Aluminium
B3656-12	Drive Roll 1.2mm
B3656-12A*	Drive Roll 1.2mm Aluminium
B3656-16	Drive Roll 1.6mm
B3656-16A	Drive Roll 1.6mm Aluminium
8 B3649	Assorted Screw & Nut Pack
9 B3644	Snap On Head
10 B3645	Ball Bearing
11 B3646	Spring
12 B3647	Spring Cap
13 B3640	Pressure Arm
14 B3641	Pressure Roll
15 B3657	Retaining Washer
16 B3642	Inlet Guide
17 B3643	Gas Nipple
18 B3648T	Pair Of Handles
19 B1408/B	Bladeswitch Trigger
20 B5922-80	Potentiometer Kit 2.2 K.Ohm
B5947-80	Potentiometer Kit 4.7 K.Ohm
B5910-80	Potentiometer Kit 10.0 K.Ohm
21 B3654	Motor
22 B3655	Seating
23 B5013-80	Gas Hose Assembly X 8mt
24 B3673	Power Cable Assembly X 8mt
25 B3661	Cable Support
26 B3675	Power Cable Adapter
27 B5035	Cable Support Nut
28 B5019-80	Canvas Cover Assembly X 8mt
29 B3667	Printed Circuit Board 42 Volt
30 B3663-85	Control Cable Assembly X 8mt
31 B3674	5 Pin Plug
32 B3672	Socket For Push Pull Plug
33 B5022/BK	Gun Plug Housing
34 B1526	Gun Plug Screw
35 B1519/BK	Gun Plug Nut - Black
36 B1523	Gun Plug Terminal
37 B3666	Gun Plug Body
38 B2518	Teflon Liner 'O' Ring
39 B1525	Liner Nut

\* Denotes Standard Build

# PP 400W Water Cooled MIG Welding Torch



Rating: 400A CO<sub>2</sub> 350A mixed gas, EN60974-7 @ 100% duty cycle. 0.8 to 1.6mm wires



Model	
Description	Part Number
<b>8.0 M</b>	
180° Neck Push Pull Welding Torch c/w Euro Fitting	PP4000W-80
45° Neck Push Pull Welding Torch c/w Euro Fitting	PP4045W-80

Nozzles	
Part Number	Description
A B5027	Cylindrical Nozzle
B5028*	Conical Nozzle
B5029	Tapered Nozzle

Contact Tips	
Part Number	Description
B B4014-10	Contact Tip .040"/1.0mm M8 Ecu
B4014-12*	Contact Tip .045"/1.2mm M8 Ecu
B4014-16	Contact Tip 1/16"/1.6mm M8 Ecu

Liners	
Part Number	Description
C B2513-80	Teflon Liner .040"- .045"/1.0-1.2mm X 8mt
B3626-80	Teflon Liner .045"-1/16"/1.2mm-1.6mm X 8mt

Components	
Part Number	Description
1 B5001	Tip Adaptor 25.0mm M8
2 B5005B	Diffuser Black
B5005C	Diffuser Ceramic
3 B4051	Straight Neck
4 B4051-45	Swan Neck
5 B3662	Contact Tube
6 B4046	Torch Body
7 B3656-10	Drive Roll 1.0mm
B3656-10A	Drive Roll 1.0mm Aluminium
B3656-12	Drive Roll 1.2mm
B3656-12A	Drive Roll 1.2mm Aluminium
B3657	Retaining Washer

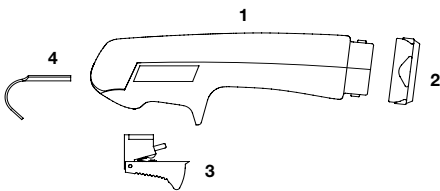
8 B3649	Assorted Screw & Nut Pack
9 B3644	Snap On Head
10 B3645	Ball Bearing
11 B3646	Spring
12 B3647	Spring Cap
13 B3640	Pressure Arm
14 B3641	Pressure Roll
15 B3649	Assorted Screw & Nut Pack
16 B3642	Inlet Guide
17 B3643	Gas Nipple
18 B3648T	Pair Of Handles
19 B1408/B	Bladeswitch Trigger
20 B3654	Motor
21 B3655	Seating
22 B5008-80	Outer Liner Assembly X 8mt
23 B5013-80	Gas Hose Assembly X 8mt
24 B4048-80	Power Cable Assembly X 8mt
25 B5012-80	Water Inlet Hose Assy X 8mt
26 B3661	Cable Support
27 B5035	Cable Support Nut
28 B5019-80	Canvas Cover Assembly X 8mt
29 B3667	Printed Circuit Board 42 Volt
30 B3674	5 Pin Plug
31 B3672	Socket For Push Pull Plug
32 B3663-85	Control Cable Assy X 8mt
33 B5023	Water Hose Nipple
34 B5017	Water Outlet Hose O/Braid
35 B5022/BK	Gun Plug Housing
36 B1526	Gun Plug Screw
37 B1519/BK	Gun Plug Nut - Black
38 B1523	Gun Plug Terminal
39 B5098	Gun Plug Body c/w Spring Pins
40 B2518	Teflon Liner 'O' Ring
41 B1525	Liner Nut
42 B5947-80	Potentiometer Kit 4.7 K.Ohm
B5910-80	Potentiometer Kit 10.0 K.Ohm

\* Denotes Standard Build



# Alternative Handles

## Medium *ergo*



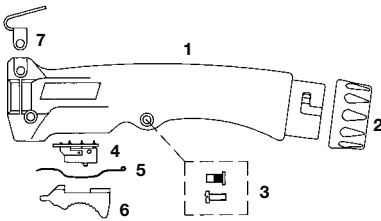
Suitable for models SB150A, 240A, 250A, 260A, 360A, 240W, 401W, 501W

### Components

Part Number	Description
1 B2514/KJ*	Ergo Handle Kit c/w Lock Nut
2 B8004*	Handle Lock Nut Black Medium
3 B2516*	Medium / Large Ergo Trigger
4 B2517*	Hanger Hook

\*Denotes standard kit parts

## Microswitch



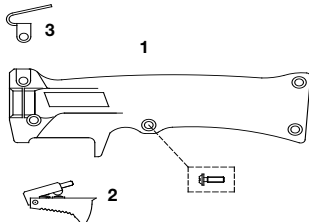
Suitable for models SB150A, 240A, 250A, 260A, 360A, 240W, 401W, 501W

### Components

Part Number	Description
1 B1508*	Microswitch Handle Kit c/w Nut
2 B8004*	Handle Lock Nut Black Medium
3 B1513*	Handle Screw Kit
4 B1510*	Microswitch
5 B1511*	Handle Spring
6 B1512*	Microswitch Trigger
7 B2517B*	Hanger Hook Blade/Micro Handle

\*Denotes standard kit parts

## Bladeswitch



Suitable for models SB150A, 240A, 250A, 260A, 360A, 240W, 401W, 501W

### Components

Part Number	Description
1 B1509*	Bladeswitch Handle Kit c/w Nut
2 B1408/B*	Bladeswitch Trigger
3 B2517B*	Hanger Hook Blade/Micro Handle

\*Denotes standard kit parts

## Small *ergo*



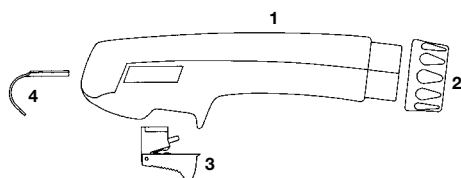
Suitable for models SB120A, 140A, 230A

### Components

Part Number	Description
1 B1414*	Ergo Handle Kit c/w Lock Nut
2 B8003*	Handle Lock Nut Black Small
3 B1416*	Small Ergo Trigger

\*Denotes standard kit parts

## Large *ergo*



Suitable for models SB380A, 400A, 610A, 610W

### Components

Part Number	Description
1 B2594*	Ergo Handle c/w Helical Supp
2 B8005*	Handle Lock Nut Black Large
3 B2516*	Medium / Large Ergo Trigger
4 B2517*	Hanger Hook

\* Denotes Standard Build





Parweld Limited  
Bewdley Business Park  
Long Bank  
Bewdley  
Worcestershire  
England

tel. +44 1299 266800  
fax. +44 1299 266900

[www.parweld.com](http://www.parweld.com)  
[info@parweld.co.uk](mailto:info@parweld.co.uk)