

Spesifikasjons Data

Dreiebord

Kapasitet : 1 Tonn

Fast Høyde

ROCK Dreiebord Modell LPE 1-WD-serien er designet for å gi maksimal posisjonering fleksibilitet ved hjelp av tilt og rotasjon av bordplaten for å manipulere arbeidsstykket i riktig posisjon for sveising eller å posisjonere presist for montering og produksjonskrav. Bordet er maskinert med fire radiale spor for feste ankerbolter, og sentrisk merking på bordflaten, til et sett av koniske lagre montert under bordet gir en jevn og konstant dreining under drift. Drevet av en AC motor inverter system. En variabel hastighet styrt av ett styreblad med lav spenning, trykknapper, og et potensiometer med en 6-meter lang styrekabel til fotpedal. Tilt bevegelsen er elektrisk drevet, drives av 0,75 KW Ac motor med dynamisk bremsing gjennom redusering girkasse.

Ferdig montert 800 ampere roterende jordklemme for å sikre god jording for sveisestrømmen

Bord diameter 900mm



Bord diameter 9 Model: LPE1-WE

Pendant Control:	24VAC circuit, push button with 6metre cable
Input voltage:	380-415V/3phase/50-60Hz (specify voltage requirement when ordering)
Rotation Capacity:	1-metric ton at 300mm
Rotation Speed:	0.1 to 1.2 rpm
Tilting Capacity:	1-metric ton at 300mm c of g
Tilt Range:	0 to 135 Degrees
Tilt Speed:	135 Degree in 65 second
Rotation Drive Motor:	0.75 KW motor
Rotation Drive Control:	0.75 KW AC inverter
Tilt Drive Motor:	0.75KW motor c/w brake
Estimate weight:	950kg

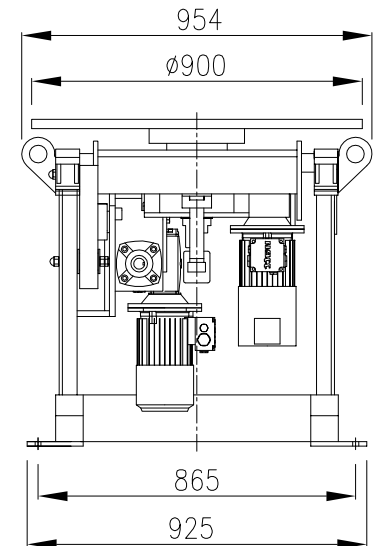
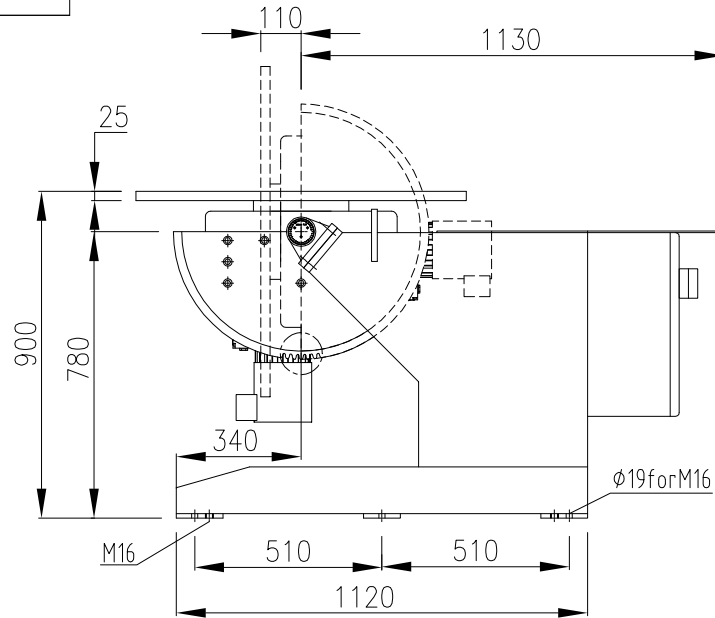
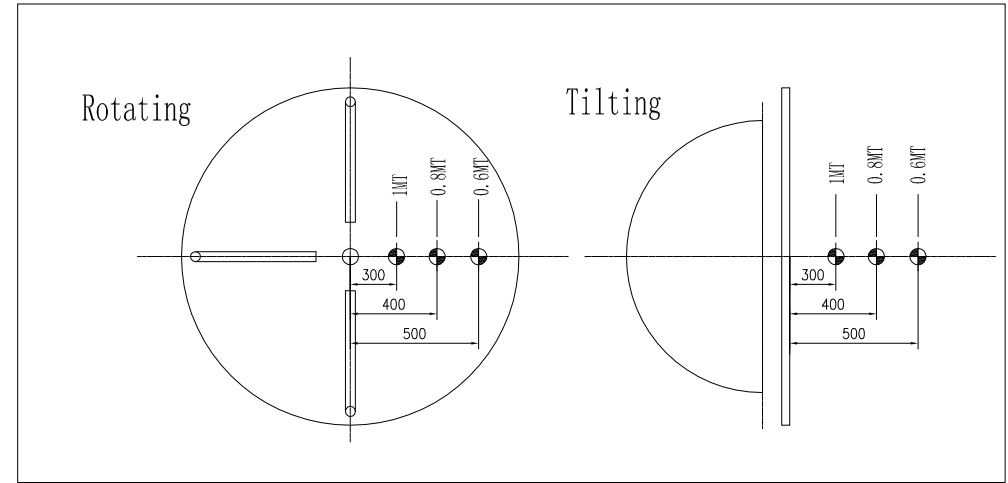
Specification for Positioner

1	Model	LPE1-WE
2	Capacity (Turning)	1MT @300mm(Please refer to load chart)
3	Capacity (Tilting)	1MT @300mm(Please refer to load chart)
4	Electrical Panel	Yes
5	Rotation Speed/power	0.1-1.2rpm at 5-50Hz /0.75kw c/w force Cooling
6	Tilt Range/power	0-135° in 65sec/0.75kw c/w brake
7	Incoming Supply	380/400/415V-3P-50Hz or 440/460/480V-3P-60Hz
8	Control Voltage	24VAC
9	Rotation Drive Control	0.75kw AC Inverter
10	Control Means	Via Push Button pendant c/w 6m cable
11	Talole Size	ø900X25t C/W 4X slot(19)
12	Earthing	800A
13	Surface Preparation	Gritblast to SA2.5
14	Painting	Powder Coating
15	Color	RAL 3003 RED & RAL9005 Black for tilting box and table
16	Qty	1 unit
17	Est Weight(kg)	675
18	Shipping dimension/cm	100(L)X93(B)X92(H)

Note: :

- 1) This drawing is accurate at time of preparation and may be subjected to final design.
- 2) Input terminals are wired for 400V by default.

LOAD CHART



ALL DIMENSIONS IN MM, UNLESS OTHERWISE SPECIFIED.

REV	DATE	DESCRIPTION	EDIT BY	REMARKS	SCALE: N.T.S.
CUSTOMER APPROVAL	CHECKED BY:	DRAWN BY:	CUSTOMER:		
			DRAWING NAME: 1T Positioner		
			DRAWING NO.: LPE 1-WE		REVISION: 2
THE ORIGINAL AND ALL COPIES OF THIS DRAWING TOGETHER WITH THE COPYRIGHT THEREOF ARE THE SOLE PROPERTY OF RED ROCK. DESIGN AND SPECIFICATIONS ARE SUBJECT TO CHANGE WITHOUT PRIOR NOTICE.					SHEET: 1 OF 1